



Connells

Moorhayes
Moorside Sturminster Newton

Moorhayes Moorside Sturminster Newton DT10 1HL

for sale offers in excess of
£300,000



Property Description

This three bedroom end of terrace house surrounded by stunning farmland is one not to be missed. A quaint property comprising of lounge, kitchen/diner, conservatory and cloakroom on the ground floor and upstairs are the three bedrooms and family bathroom.

Outside the property has good sized gardens to the front and rear with two allocated parking spaces.

Entrance Hall

Double glazed door to the front and a radiator.

Cloakroom

Double glazed window to the side, WC and a wash hand basin.

Lounge

15' 8" max x 10' 5" (4.78m max x 3.17m)

Double glazed window to the front, log burner and a radiator.

Kitchen / Diner

17' 4" x 9' (5.28m x 2.74m)

Fitted kitchen with wall and base units, stainless steel sink and drainer, electric cooker and hob, plumbing for a washing machine and dishwasher, radiator and space for a fridge/freezer.

Conservatory

15' 6" x 10' 7" (4.72m x 3.23m)

UPVC conservatory with door leading to the garden.

Landing

Double glazed window to the side, access to the loft which has a light, airing cupboard and a radiator.

Bedroom One

12' 7" x 10' 6" (3.84m x 3.20m)

Double glazed window to the front, built in double wardrobe and a radiator.

Bedroom Two

9' 8" x 9' 3" (2.95m x 2.82m)

Double glazed window to the rear, built in single wardrobe and a radiator.

Bedroom Three

7' 7" x 6' 7" (2.31m x 2.01m)

Double glazed window to the rear and a radiator.

Shower Room

Velux window, shower cubicle, WC and a wash hand basin.

Front Garden

To the front the garden is laid to lawn with a path to the front door.

Rear Garden

Substantial garden to the rear which is mainly laid to lawn with patio and gravel seating area, greenhouse and a shed.

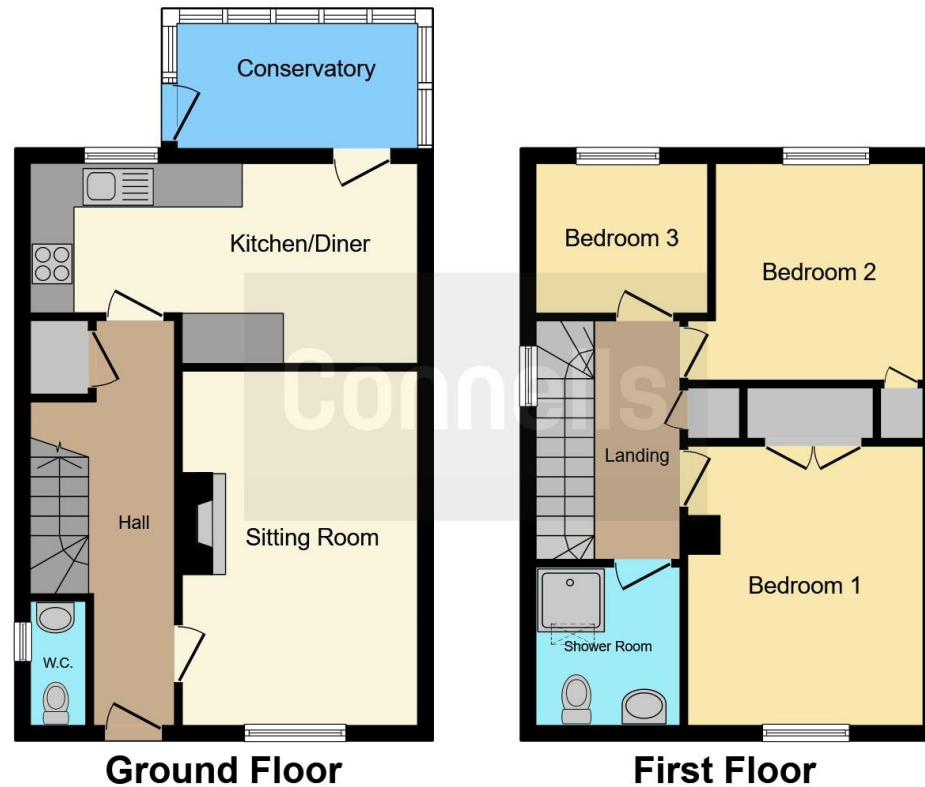
Parking

Two allocated parking spaces with the property.









This floor plan is for illustrative purposes only. It is not drawn to scale. Any measurements, floor areas (including any total floor area), openings and orientation are approximate. No details are guaranteed, they cannot be relied upon for any purpose and they do not form part of any agreement. No liability is taken for any error, omission or misstatement. A party must rely upon its own inspection(s). Powered by www.focalagent.com

To view this property please contact Connells on

T 01747 854 001
E shaftesbury@connells.co.uk

34 High Street
 SHAFTESBURY SP7 8JG

EPC Rating: D

Tenure: Freehold

view this property online connells.co.uk/Property/SFT305887



1. MONEY LAUNDERING REGULATIONS Intending purchasers will be asked to produce identification documentation at a later stage and we would ask for your co-operation in order that there will be no delay in agreeing the sale. 2. These particulars do not constitute part or all of an offer or contract. 3. The measurements indicated are supplied for guidance only and as such must be considered incorrect. Potential buyers are advised to recheck measurements before committing to any expense. 4. We have not tested any apparatus, equipment, fixtures, fittings or services and it is in the buyers interest to check the working condition of any appliances.

Connells Residential is registered in England and Wales under company number 1489613, Registered Office is Cumbria House, 16-20 Hockliffe Street, Leighton Buzzard, Bedfordshire, LU7 1GN. VAT Registration Number is 500 2481 05.

See all our properties at www.connells.co.uk | www.rightmove.co.uk | www.zoopla.co.uk

Property Ref: SFT305887 - 0006