



Connells

Anstee Road
Shaftesbury



Property Description

Connells are pleased to offer to the market this FOUR BEDROOM detached family home benefiting from lounge and spacious kitchen/family room on the ground floor. With an ensuite to the master bedroom, four bedrooms and family bathroom on the first floor this is a property not to be missed. Outside there is a low maintenance garden to the rear with integrated garage and driveway parking to the front of the property for two cars. Call today to arrange a viewing.

Entrance Hall

Double glazed door to the front, stairs to the first floor and a radiator.

Cloakroom

WC, wash hand basin, tiling to splash back, extractor fan and a radiator.

Lounge

13' 2" x 10' 2" (4.01m x 3.10m)

Double glazed window to the front, electric fireplace and a radiator.

Kitchen / Family Room

24' 4" max x 8' 4" max (7.42m max x 2.54m max)

Double glazed window and patio doors to the rear, fitted kitchen with wall and base units, work surfaces, stainless steel sink and drainer, electric oven and gas hob, cooker hood, plumbing for a washing machine and dishwasher and the gas central heating boiler.

Landing

Stairs from the entrance hall, cupboard and ladder access to the loft.

Bedroom One

16' 5" x 11' (5.00m x 3.35m)

Double glazed window to the front, wardrobes and a radiator.

Ensuite

Double glazed window to the front, shower, WC, wash hand basin, heated towel rail and an extractor fan.

Bedroom Two

11' 9" max x 10' 9" max (3.58m max x 3.28m max)
Double glazed window to the rear, telephone point and a radiator.

Bedroom Three

9' 6" x 8' 8" (2.90m x 2.64m)
Double glazed window to the rear and a radiator.

Bedroom Four

8' 5" x 8' 4" (2.57m x 2.54m)
Double glazed window to the rear, telephone point and a radiator.

Bathroom

Double glazed window to the rear, bath, WC, wash hand basin, tiling, extractor fan and a radiator.

Parking

Driveway for two cars in front of the property.

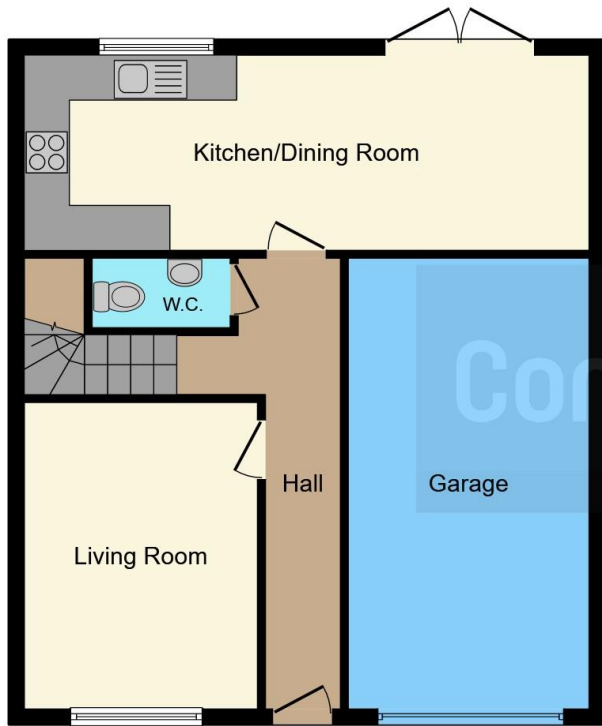
Garage

19' 8" x 9' 3" (5.99m x 2.82m)
Up and over door, light and power.

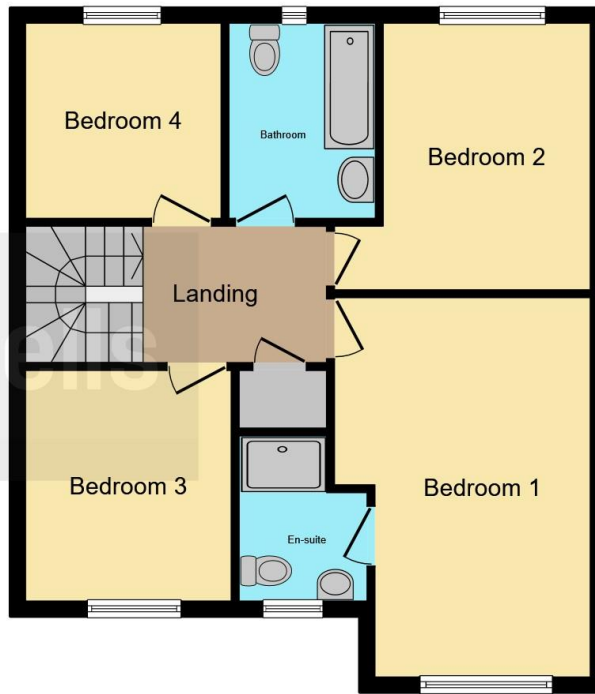
Rear Garden

To the rear the garden is fully enclosed and laid to lawn with a side access gate.





Ground Floor



First Floor

This floor plan is for illustrative purposes only. It is not drawn to scale. Any measurements, floor areas (including any total floor area), openings and orientation are approximate. No details are guaranteed, they cannot be relied upon for any purpose and they do not form part of any agreement. No liability is taken for any error, omission or misstatement. A party must rely upon its own inspection(s). Powered by www.focalagent.com

To view this property please contact Connells on

T 01747 854 001
E shaftesbury@connells.co.uk

34 High Street
 SHAFTESBURY SP7 8JG

EPC Rating: B

view this property online connells.co.uk/Property/SFT305594



Tenure: Freehold



1. MONEY LAUNDERING REGULATIONS Intending purchasers will be asked to produce identification documentation at a later stage and we would ask for your co-operation in order that there will be no delay in agreeing the sale. 2. These particulars do not constitute part or all of an offer or contract. 3. The measurements indicated are supplied for guidance only and as such must be considered incorrect. Potential buyers are advised to recheck measurements before committing to any expense. 4. We have not tested any apparatus, equipment, fixtures, fittings or services and it is in the buyers interest to check the working condition of any appliances.

Connells Residential is registered in England and Wales under company number 1489613, Registered Office is Cumbria House, 16-20 Hockliffe Street, Leighton Buzzard, Bedfordshire, LU7 1GN. VAT Registration Number is 500 2481 05.

See all our properties at www.connells.co.uk | www.rightmove.co.uk | www.zoopla.co.uk

Property Ref: SFT305594 - 0005