



Connells

Lyons Walk
Shaftesbury



Property Description

A charming listed town house located within walking distance of the excellent amenities in Shaftesbury's vibrant town centre. The spacious accommodation is arranged on 3 split level floors with 3/4 bedrooms and from the front elevation provides some attractive views towards the beautiful countryside which surrounds Shaftesbury.

Entrance Hall

Door to the front, stairs up and down and a radiator.

Study / Bedroom 4

8' 1" x 7' 5" (2.46m x 2.26m)

Single glazed sash window to the front, radiator and a telephone point.

Bathroom

Bath with a shower over and mixer taps, WC, wash hand basin, heated towel rail, shaver point, partially tiled and an extractor fan.

Rear Hallway

Under stairs cupboard, door leading into bedroom two and a radiator.

Bedroom Two

13' 9" max x 11' 9" (4.19m max x 3.58m)

Single glazed low level sash window to the rear, television aerial socket and a radiator.

Kitchen

12' 6" x 11' 8" (3.81m x 3.56m)

Single glazed sash window to the rear, fitted kitchen with wall and base units, worksurfaces, stainless steel sink and drainer, integrated washing machine and dishwasher, electric oven and hob, cooker hood and an external door leading outside to a communal area.

Bathroom

Sash window to the side, bath with mixer taps, WC, wash hand basin, partially tiled, heated towel rail and a shaver point.

Lounge

14' 6" max x 10' max (4.42m max x 3.05m max)

Single glazed sash window to the side, television aerial socket and a radiator.

Bedroom One

11' 7" x 9' plus door recess (3.53m x 2.74m plus door recess)

An L shaped room with single glazed sash window to the front, radiator, telephone point and a television aerial socket.

Ensuite

Shower, WC, wash hand basin, partially tiled, heated towel rail, shaver point and an extractor fan.

Bedroom Three

14' 7" x 11' 7" (4.45m x 3.53m)

Situated on the top floor with single glazed sash window to the front, exposed beams, European plug socket, access to the loft, television aerial socket, telephone point and the gas central heating boiler.

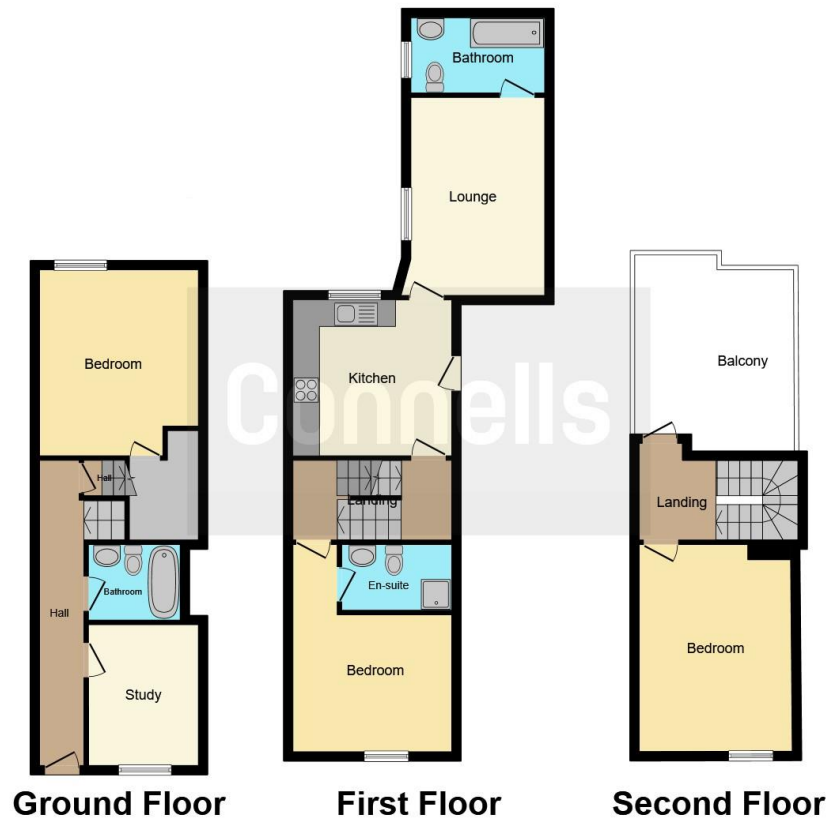
Roof Terrace

Terrace accessed through a single glazed door from the top floor landing.

Agents Note

Service charge for the property is still to be confirmed.





This floorplan is for illustrative purposes only and is not drawn to scale. Measurements, floor-areas, openings and orientations are approximate. They should not be relied upon for any purpose and do not form any part of an agreement. No liability is taken for any error or mis-statement. All parties must rely on their own inspections.

To view this property please contact Connells on

T 01747 854 001
E shaftesbury@connells.co.uk

34 High Street
 SHAFTESBURY SP7 8JG

EPC Rating: Exempt

view this property online connells.co.uk/Property/SFT305395

This is a Leasehold property with details as follows; Term of Lease 990 years. Should you require further information please contact the branch. Please Note additional fees could be incurred for items such as Leasehold packs.

Tenure: Leasehold



1. MONEY LAUNDERING REGULATIONS Intending purchasers will be asked to produce identification documentation at a later stage and we would ask for your co-operation in order that there will be no delay in agreeing the sale. 2. These particulars do not constitute part or all of an offer or contract. 3. The measurements indicated are supplied for guidance only and as such must be considered incorrect. Potential buyers are advised to recheck measurements before committing to any expense. 4. We have not tested any apparatus, equipment, fixtures, fittings or services and it is in the buyers interest to check the working condition of any appliances.

Connells Residential is registered in England and Wales under company number 1489613, Registered Office is Cumbria House, 16-20 Hockliffe Street, Leighton Buzzard, Bedfordshire, LU7 1GN. VAT Registration Number is 500 2481 05.

See all our properties at www.connells.co.uk | www.rightmove.co.uk | www.zoopla.co.uk

Property Ref: SFT305395 - 0010