



**Connells**

Medway Drive  
Wellingborough





## Property Description

\*\*\* This three bedroom detached home with annexe addition offers versatile accommodation to suit many a need. The property benefits from a refitted kitchen, three reception areas, three bath/shower rooms and cloakroom as well as beautifully maintained, low maintenance garden & off street parking! \*\*\*

## Entrance Hall

Double glazed door and window to front elevation.

## Living Room

15' 5" Into Bay x 11' 1" Max (4.70m Into Bay x 3.38m Max)

Double glazed window to front elevation, log burner and radiator.

## Kitchen Area

14' 5" x 10' 1" (4.39m x 3.07m)

Double glazed door to side elevation. Fitted kitchen with a range of wall and base units with work surfaces over and stainless steel sink drainer. Double electric oven and gas hob.

## Dining Area

11' 1" x 9' 1" (3.38m x 2.77m)

## Cloakroom

Low level wc and wash hand basin. Radiator.

## Study

Double glazed window to front elevation and radiator.

## Annexe Room

15' 9" + Alcove x 14' 2" Max (4.80m + Alcove x 4.32m Max)

Double glazed door and window to rear elevation. Radiator.

## Annexe Shower Room

Double glazed window to side elevation. Double shower cubicle, low level wc and vanity wash hand basin.

## First Floor Landing

Airing cupboard and loft hatch.

## Bedroom One

17' 4" x 9' 1" (5.28m x 2.77m)

Double glazed window to front elevation and radiator.

## En-Suite

Double glazed window to rear elevation. Bath, low level wc and wash hand basin with tiling to water sensitive areas and radiator.

## Bedroom Two

14' 7" x 7' 10" (4.45m x 2.39m)

Two double glazed windows to rear elevation and radiator.

## Bedroom Three

14' 6" x 8' 7" (4.42m x 2.62m)

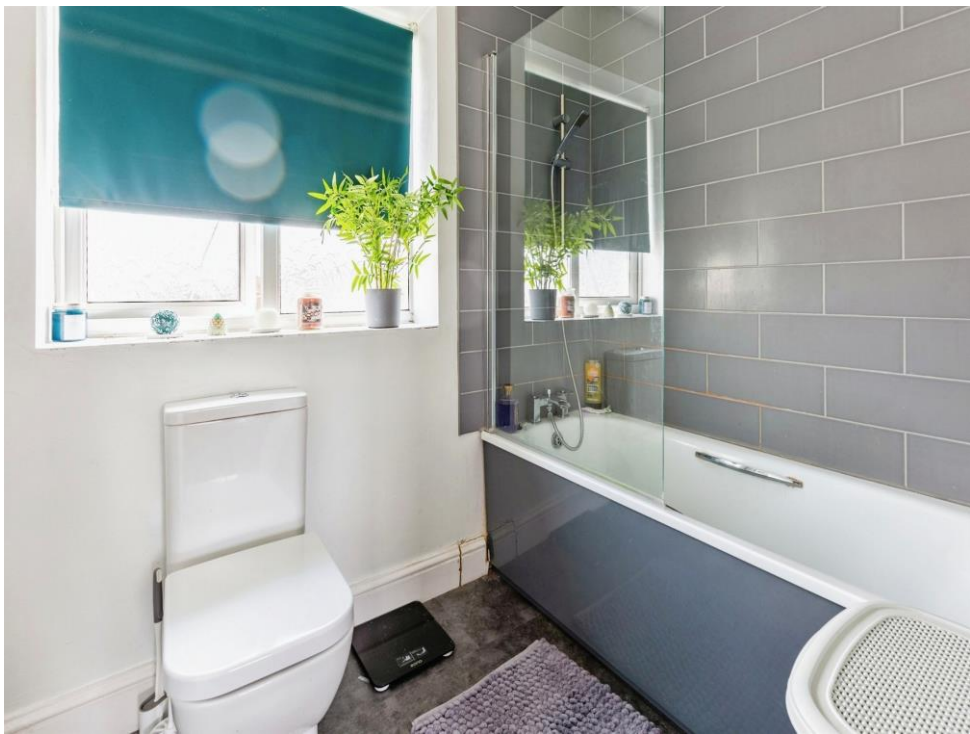
Two double glazed windows to front elevation and radiator.

## Bathroom

Double glazed window to side elevation. Bath, low level wc and wash hand basin with tiling to water sensitive areas and radiator.















This floor plan is for illustrative purposes only. It is not drawn to scale. Any measurements, floor areas (including any total floor area), openings and orientation are approximate. No details are guaranteed, they cannot be relied upon for any purpose and they do not form part of any agreement. No liability is taken for any error, omission or misstatement. A party must rely upon its own inspection(s). Powered by [www.focalagent.com](http://www.focalagent.com)

To view this property please contact Connells on

**T 01933 312 363**  
**E [rushden@connells.co.uk](mailto:rushden@connells.co.uk)**

66 High Street  
 RUSHDEN NN10 0PJ

**EPC Rating: C**

**view this property online [connells.co.uk/Property/RDN404445](http://connells.co.uk/Property/RDN404445)**

Tenure: Freehold



1. MONEY LAUNDERING REGULATIONS Intending purchasers will be asked to produce identification documentation at a later stage and we would ask for your co-operation in order that there will be no delay in agreeing the sale. 2. These particulars do not constitute part or all of an offer or contract. 3. The measurements indicated are supplied for guidance only and as such must be considered incorrect. Potential buyers are advised to recheck measurements before committing to any expense. 4. We have not tested any apparatus, equipment, fixtures, fittings or services and it is in the buyers interest to check the working condition of any appliances.

Connells Residential is registered in England and Wales under company number 1489613, Registered Office is Cumbria House, 16-20 Hockliffe Street, Leighton Buzzard, Bedfordshire, LU7 1GN. VAT Registration Number is 500 2481 05.

**See all our properties at [www.connells.co.uk](http://www.connells.co.uk) | [www.rightmove.co.uk](http://www.rightmove.co.uk) | [www.zoopla.co.uk](http://www.zoopla.co.uk)**

Property Ref: RDN404445 - 0006