



Connells

Parsonage Way
Rushden



Property Description

*** A home for all of the family! This 5 bedroom detached home with double garage & landscaped rear garden has a lot to offer in our valuers opinion. Lounge Diner, Kitchen Breakfast Room, ground floor cloakroom + 3 further bath/shower rooms... this property has something for everyone! ***

Entrance Hall

Double glazed door to front elevation.

Cloakroom

Low level wc and wash hand basin.

Lounge Diner

24' 5" x 10' 8" (7.44m x 3.25m)

Double glazed French doors to rear elevation, double glaze windows to front and rear elevations. Fireplace and radiator.

Kitchen Breakfast Room

18' 3" x 8' 6" Min (5.56m x 2.59m Min)

Double glazed door to rear elevation, double glazed windows to front and rear elevations. Fitted kitchen with a range of wall and base units with work surfaces over and 1.5 bowl stainless steel sink drainer. Double electric oven and gas hob with cooker hood over.

First Floor Landing

Double glazed window to rear elevation.

Bedroom One

14' 3" x 9' 1" (4.34m x 2.77m)

Double glazed window to front elevation, built in wardrobe and radiator.

En-Suite

Double glazed window to rear elevation. Shower cubicle, low level wc and wash hand basin with tiling to water sensitive areas, shaver point and radiator.

Bedroom Four

10' 8" x 7' 11" To Wardrobe (3.25m x 2.41m To Wardrobe)

Double glazed window to front elevation, built in wardrobe and radiator.

Bedroom Five

10' 10" x 7' 5" (3.30m x 2.26m)

Double glazed windows to rear elevation and radiator.

Bathroom

Double glazed window to front elevation. Bath with hand-held shower attachment, low level wc and wash hand basin with tiling to water sensitive areas and radiator.

Second Floor Landing

Bedroom Two

15' To Bay x 10' 11" (4.57m To Bay x 3.33m)

Double glazed window to front elevation, skylight and radiator.

Bedroom Three

15' To Bay x 8' 9" Max (4.57m To Bay x 2.67m Max)

Double glazed window to front elevation, skylight and radiator.

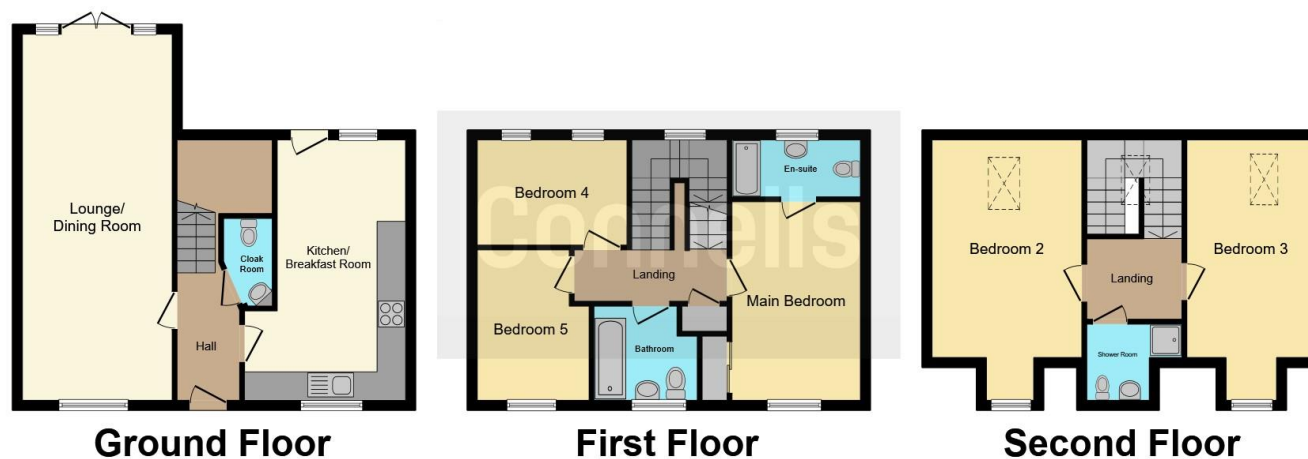
Shower Room

Shower cubicle, low level wc and wash hand basin with tiling to water sensitive areas and radiator









This floor plan is for illustrative purposes only. It is not drawn to scale. Any measurements, floor areas (including any total floor area), openings and orientation are approximate. No details are guaranteed, they cannot be relied upon for any purpose and they do not form part of any agreement. No liability is taken for any error, omission or misstatement. A party must rely upon its own inspection(s). Powered by www.focalagent.com

To view this property please contact Connells on

T 01933 312 363
E rushden@connells.co.uk

66 High Street
 RUSHDEN NN10 0PJ

EPC Rating: B

Tenure: Freehold

view this property online connells.co.uk/Property/RDN405687



1. MONEY LAUNDERING REGULATIONS Intending purchasers will be asked to produce identification documentation at a later stage and we would ask for your co-operation in order that there will be no delay in agreeing the sale. 2. These particulars do not constitute part or all of an offer or contract. 3. The measurements indicated are supplied for guidance only and as such must be considered incorrect. Potential buyers are advised to recheck measurements before committing to any expense. 4. We have not tested any apparatus, equipment, fixtures, fittings or services and it is in the buyers interest to check the working condition of any appliances.

Connells Residential is registered in England and Wales under company number 1489613, Registered Office is Cumbria House, 16-20 Hockliffe Street, Leighton Buzzard, Bedfordshire, LU7 1GN. VAT Registration Number is 500 2481 05.

See all our properties at www.connells.co.uk | www.rightmove.co.uk | www.zoopla.co.uk

Property Ref: RDN405687 - 0002