



Connells

Northdale Common
Raunds Wellingborough

Northdale Common Raunds Wellingborough NN9 6XB

for sale
£300,000



Property Description

*** Immaculately presented throughout is this three bedroom, three storey home in the heart of Raunds. The property benefits from ground floor cloakroom, first floor bathroom and second floor shower room as well as lounge diner, off street parking and enclosed rear garden! *** Call CONNELLS to arrange your viewing!

Entrance Hall

Double glazed door to front elevation. Under stairs cupboard and stairs rising to first floor landing.

Cloakroom

Double glazed window to front elevation. Low level wc and vanity wash hand basin with ladder style radiator and tiling to water sensitive areas.

Kitchen

14' 3" x 7' 10" (4.34m x 2.39m)

Double glazed window to front elevation. Fitted kitchen with a range of wall and base units with work surfaces over and 1.5 bowl sink drainer. Electric oven and hob with cooker hood over, integrated dishwasher and space for washing machine. Radiator.

Living Room

15' 5" Max x 13' (4.70m Max x 3.96m)

Double glazed French doors and windows to rear elevation. Radiator.

First Floor Landing

Doors to bedroom 2, 3 and bathroom, storage cupboard and stairs to second floor landing.

Bedroom Two

15' 5" x 9' 11" (4.70m x 3.02m)

Double glazed window to rear elevation and radiator.

Bedroom Three

15' 5" x 9' 5" (4.70m x 2.87m)

Double glazed windows to front elevation and radiator.

Bathroom

Bath with shower over, low level wc and vanity wash hand basin with tiling to water sensitive areas.

Second Floor Landing

Doors to bedroom One and Shower Room.

Bedroom One

25' 7" Max x 10' 5" Max (7.80m Max x 3.17m Max)

Double glazed window to front elevation, built in wardrobes and radiator.

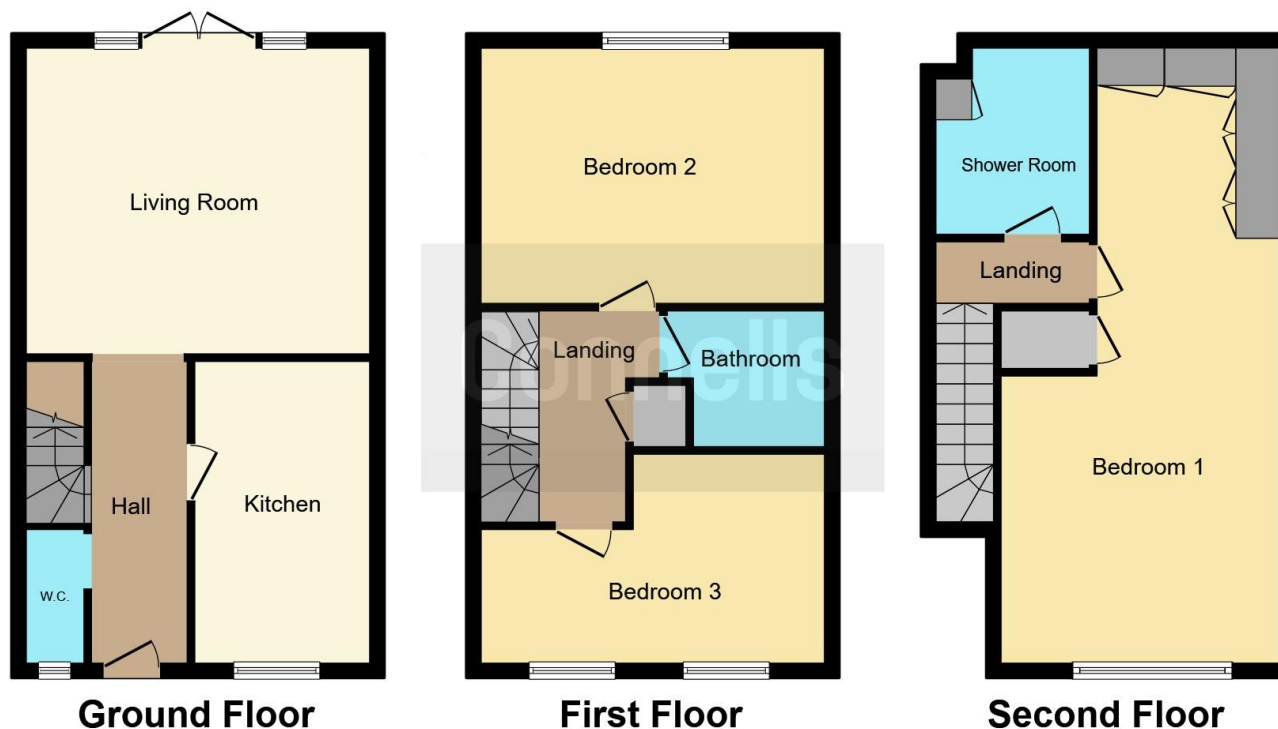
Shower Room

Shower cubicle and low level wc with ladder style radiator and tiling to water sensitive areas.









This floor plan is for illustrative purposes only. It is not drawn to scale. Any measurements, floor areas (including any total floor area), openings and orientation are approximate. No details are guaranteed, they cannot be relied upon for any purpose and they do not form part of any agreement. No liability is taken for any error, omission or misstatement. A party must rely upon its own inspection(s). Powered by www.focalagent.com

To view this property please contact Connells on

T 01933 312 363
E rushden@connells.co.uk

66 High Street
 RUSHDEN NN10 0PJ

EPC Rating: B

Tenure: Freehold

view this property online connells.co.uk/Property/RDN405634



1. MONEY LAUNDERING REGULATIONS Intending purchasers will be asked to produce identification documentation at a later stage and we would ask for your co-operation in order that there will be no delay in agreeing the sale. 2. These particulars do not constitute part or all of an offer or contract. 3. The measurements indicated are supplied for guidance only and as such must be considered incorrect. Potential buyers are advised to recheck measurements before committing to any expense. 4. We have not tested any apparatus, equipment, fixtures, fittings or services and it is in the buyers interest to check the working condition of any appliances.

Connells Residential is registered in England and Wales under company number 1489613, Registered Office is Cumbria House, 16-20 Hockliffe Street, Leighton Buzzard, Bedfordshire, LU7 1GN. VAT Registration Number is 500 2481 05.

See all our properties at www.connells.co.uk | www.rightmove.co.uk | www.zoopla.co.uk

Property Ref: RDN405634 - 0004