



Connells

Eady Road
Burton Latimer Kettering



Property Description

*** This three bedroom semi-detached home has been lovingly maintained and updated by it's current owners, benefiting from two reception rooms, modern, refitted kitchen and shower room, beautifully maintained rear garden and off street parking... what more could you want? ***

Entrance Hall

Double glazed door to side elevation, stairs rising to first floor landing, radiator.

Lounge

14' 11" Max x 10' 5" (4.55m Max x 3.17m)

Double glazed window to front elevation, gas fire and radiator.

Dining Room/Snug

21' 1" x 8' 9" Max (6.43m x 2.67m Max)

Double glazed doors to rear elevation, double glazed window to side elevation and double glazed sky light. Under stairs cupboard, electric fire and radiator.

Kitchen

11' 10" Min x 6' 3" (3.61m Min x 1.91m)

Door to side elevation and double glazed window to rear elevation. Fitted with a range of wall and base units with work surfaces over and stainless steel sink drainer. Electric oven and hob with cooker hood over. Integrated dishwasher, fridge freezer and microwave.

Conservatory/Lean To

14' 2" x 3' 8" (4.32m x 1.12m)

Double glazed door to rear elevation and radiator.

First Floor Landing

Loft access and radiator.

Bedroom One

12' 11" To Wardrobe x 10' 6" (3.94m To Wardrobe x 3.20m)

Double glazed window to front elevation, built in wardrobes and radiator.

Bedroom Two

9' 3" x 8' 3" into wardrobe (2.82m x 2.51m into wardrobe)

Double glazed window to rear elevation, fitted wardrobes and radiator.

Bedroom Three

9' 5" x 6' 5" (2.87m x 1.96m)

Double glazed window to rear elevation, built in cupboard and radiator.

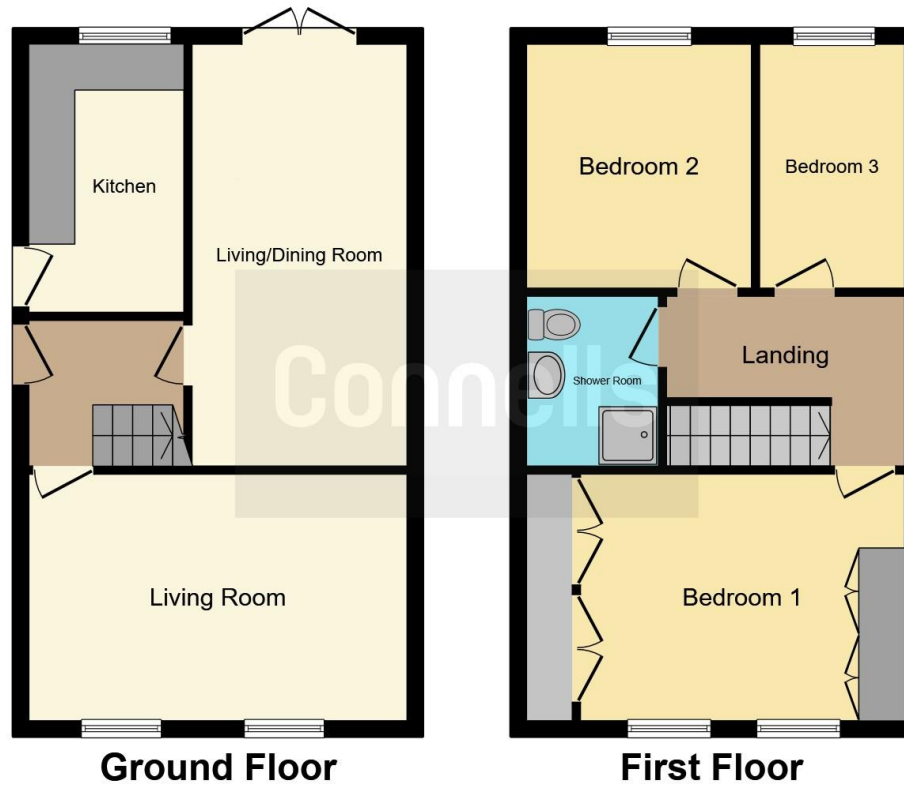
Shower Room

Double glazed window to side elevation. Shower cubicle, low level wc and wash hand basin with heated towel radiator and part tiling.









This floor plan is for illustrative purposes only. It is not drawn to scale. Any measurements, floor areas (including any total floor area), openings and orientation are approximate. No details are guaranteed, they cannot be relied upon for any purpose and they do not form part of any agreement. No liability is taken for any error, omission or misstatement. A party must rely upon its own inspection(s). Powered by www.focalagent.com

To view this property please contact Connells on

T 01933 312 363
E rushden@connells.co.uk

66 High Street
 RUSHDEN NN10 0PJ

EPC Rating: Awaiting

view this property online connells.co.uk/Property/RDN405457

Tenure: Freehold



1. MONEY LAUNDERING REGULATIONS Intending purchasers will be asked to produce identification documentation at a later stage and we would ask for your co-operation in order that there will be no delay in agreeing the sale. 2. These particulars do not constitute part or all of an offer or contract. 3. The measurements indicated are supplied for guidance only and as such must be considered incorrect. Potential buyers are advised to recheck measurements before committing to any expense. 4. We have not tested any apparatus, equipment, fixtures, fittings or services and it is in the buyers interest to check the working condition of any appliances.

Connells Residential is registered in England and Wales under company number 1489613, Registered Office is Cumbria House, 16-20 Hockliffe Street, Leighton Buzzard, Bedfordshire, LU7 1GN. VAT Registration Number is 500 2481 05.

See all our properties at www.connells.co.uk | www.rightmove.co.uk | www.zoopla.co.uk

Property Ref: RDN405457 - 0002