



Connells

Juliet Rise
WELLINGBOROUGH



Property Description

*** This five bedroom detached home is well presented throughout and benefits from kitchen diner with utility room, lounge and separate study as well as cloakroom, bathroom and en-suite. Externally there are front and rear gardens, garage and off street parking! ***

Entrance Hall

Double glazed door to front elevation, stairs rising to first floor landing, under stairs storage and radiator.

Cloakroom

Low level wc, wash hand basin and radiator.

Study

10' 5" x 9' 3" (3.17m x 2.82m)

Double glazed window to front elevation, built in storage cupboard and radiator.

Lounge

14' 7" x 10' 11" (4.45m x 3.33m)

Double glazed window to front elevation and radiator.

Kitchen Diner Family Room

27' 5" x 11' 4" (8.36m x 3.45m)

Double glazed door and two double glazed windows to rear elevation and radiator. Fitted kitchen with a range of wall and base units with work surfaces over and 1.5 bowl stainless steel sink drainer. Double electric oven and hob with cooker hood over, integrated dishwasher and fridge freezer. Two radiators.

Utility Room

Door to side elevation, fitted with a selection of wall and base units and radiator.

First Floor Landing

Airing cupboard, loft hatch and radiator.

Bedroom One

12' 5" Max x 11' 8" (3.78m Max x 3.56m)

Double glazed window to front elevation, built in cupboards and radiator.

En-Suite

Double glazed window to front elevation, shower, low level wc and wash hand basin. Radiator.

Bedroom Two

12' 9" x 11' 1" Max (3.89m x 3.38m Max)

Double glazed window to front elevation and radiator.

Bedroom Three

12' 4" x 9' 11" Min (3.76m x 3.02m Min)

Double glazed window to rear elevation and radiator.

Bedroom Four

12' 10" x 8' 11" (3.91m x 2.72m)

Double glazed window to front elevation and radiator.

Bedroom Five

7' 11" x 7' 6" (2.41m x 2.29m)

Double glazed window to rear elevation and radiator.

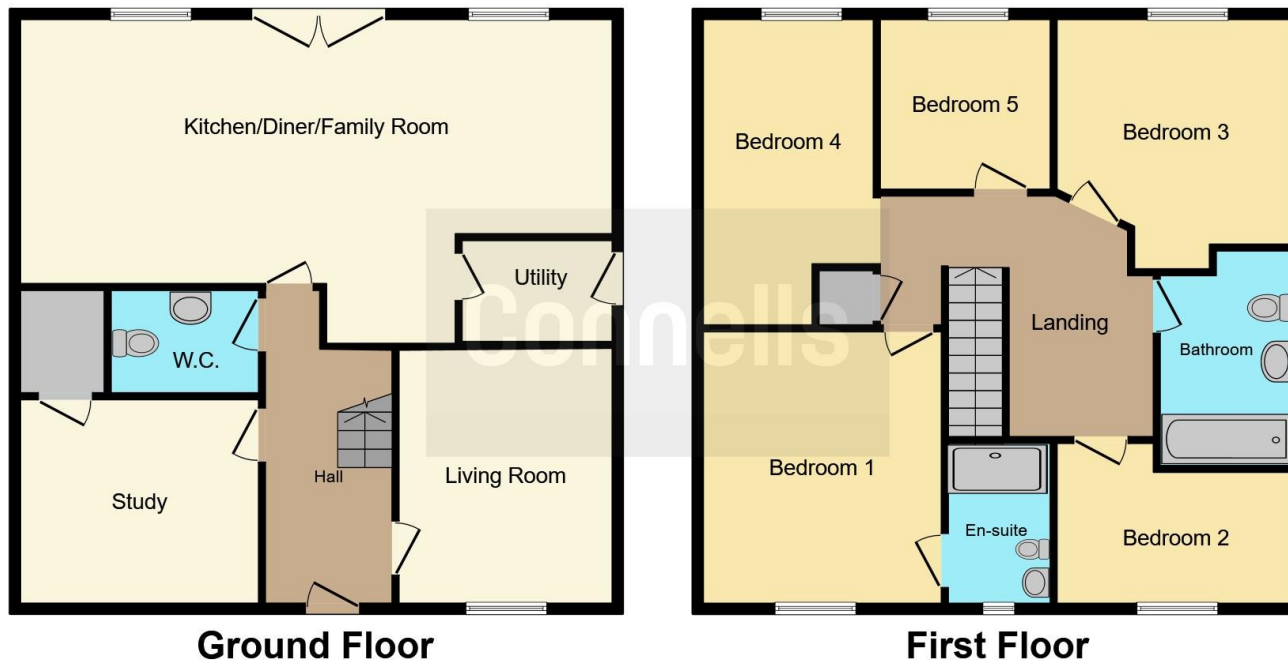
Bathroom

Double glazed window to side elevation, Bath, separate shower, low level wc and wash hand basin. Radiator.









This floor plan is for illustrative purposes only. It is not drawn to scale. Any measurements, floor areas (including any total floor area), openings and orientation are approximate. No details are guaranteed, they cannot be relied upon for any purpose and they do not form part of any agreement. No liability is taken for any error, omission or misstatement. A party must rely upon its own inspection(s). Powered by www.focalagent.com

To view this property please contact Connells on

T 01933 312 363
E rushden@connells.co.uk

66 High Street
 RUSHDEN NN10 0PJ

EPC Rating: B

view this property online connells.co.uk/Property/RDN405376

Tenure: Freehold



Awaiting Photograph

1. MONEY LAUNDERING REGULATIONS Intending purchasers will be asked to produce identification documentation at a later stage and we would ask for your co-operation in order that there will be no delay in agreeing the sale. 2. These particulars do not constitute part or all of an offer or contract. 3. The measurements indicated are supplied for guidance only and as such must be considered incorrect. Potential buyers are advised to recheck measurements before committing to any expense. 4. We have not tested any apparatus, equipment, fixtures, fittings or services and it is in the buyers interest to check the working condition of any appliances.

Connells Residential is registered in England and Wales under company number 1489613, Registered Office is Cumbria House, 16-20 Hockliffe Street, Leighton Buzzard, Bedfordshire, LU7 1GN. VAT Registration Number is 500 2481 05.

See all our properties at www.connells.co.uk | www.rightmove.co.uk | www.zoopla.co.uk

Property Ref: RDN405376 - 0003