

for sale

£270,000



Amors Drove Sherborne DT9 4FB

This three bedroom end of terrace house with NO ONWARD CHAIN is one not to be missed. Contact us today to arrange a viewing.



Amors Drove Sherborne DT9 4FB

Entrance Hall

UPVC door to the front, stairs to the first floor, cupboard, telephone point and a radiator.

Cloakroom

Double glazed window to the front, WC, wash hand basin and a heated towel rail.

Lounge

Double glazed windows to the front and side, under stairs cupboard, television aerial socket, telephone point, USB socket and a radiator.



Kitchen

Double glazed window and french doors to the rear, fitted kitchen with wall and base units, work surfaces, plumbing for a washing machine, space for a fridge/freezer, stainless steel sink and drainer, electric cooker point, radiator and the wall mounted gas central heating boiler.

Landing

Airing cupboard and access to the loft.

Bedroom One

Double glazed window to the front, cupboard over the stairwell, television aerial socket, USB sockets and a radiator.

Ensuite

Double glazed window to the front, shower cubicle, WC, wash hand basin, extractor fan and a radiator.

Bedroom Two

Double glazed window to the rear, television aerial socket and a radiator.

Bedroom Three

Double glazed window to the rear, television aerial socket and a radiator.

Bathroom

Double glazed window, bath with mixer taps and shower attachment, wash hand basin with vanity unit under, WC, shaver point, heated towel rail and an extractor fan.

Parking

Allocated parking to the rear of the property.

Front

To the front there is a small gravel under window.

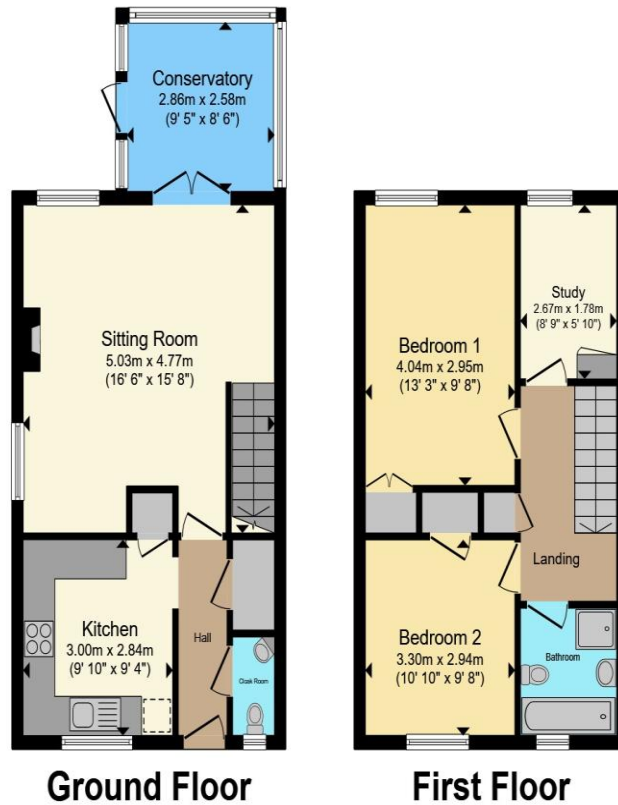
Rear Garden

To the rear, is decking with an area laid to lawn, gate to the rear and a timber shed to the side.

Agents Note

The property is currently leasehold, but will become freehold on completion of the sale.





Total floor area 85.4 m² (919 sq.ft.) approx

This floor plan is for illustrative purposes only. It is not drawn to scale. Any measurements, floor areas (including any total floor area), openings and orientation are approximate. No details are guaranteed, they cannot be relied upon for any purpose and they do not form part of any agreement. No liability is taken for any error, omission or misstatement. A party must rely upon its own inspection(s). Powered by www.propertybox.io



To view this property please contact Connells on

T 01935 812 155
E sherborne@connells.co.uk

92 Cheap Street
 SHERBORNE DT9 3BJ

Property Ref: SHR306543 - 0002

Tenure: Leasehold EPC Rating: B

Council Tax Band: C Service Charge: Ask Agent

Ground Rent: Ask Agent

view this property online connells.co.uk/Property/SHR306543

This is a Leasehold property with details as follows; Term of Lease 20 years from 19 Apr 2016. Should you require further information please contact the branch. Please Note additional fees could be incurred for items such as Leasehold packs.

1. MONEY LAUNDERING REGULATIONS Intending purchasers will be asked to produce identification documentation at a later stage and we would ask for your co-operation in order that there will be no delay in agreeing the sale. 2. These particulars do not constitute part or all of an offer or contract. 3. The measurements indicated are supplied for guidance only and as such must be considered incorrect. Potential buyers are advised to recheck measurements before committing to any expense. 4. We have not tested any apparatus, equipment, fixtures, fittings or services and it is in the buyers interest to check the working condition of any appliances.

Connells Residential is registered in England and Wales under company number 1489613, Registered Office is Cumbria House, 16-20 Hockliffe Street, Leighton Buzzard, Bedfordshire, LU7 1GN. VAT Registration Number is 500 2481 05.

see all our properties at www.connells.co.uk | www.rightmove.co.uk | www.zoopla.co.uk

