

for sale

£350,000



Teulon Close Overstone Northampton NN6 0GH

Built by David Wilson Homes to the Kennett design and completed in 2024, is this immaculately presented family home. Ideally located for good local schools and amenities this is the perfect home for young families. Viewing is highly advised to fully appreciate this beautiful family home.

Teulon Close Overstone Northampton NN6 0GH

Entrance Hall

Door to the front elevation. Wall mounted radiator and further doors leading to the downstairs cloakroom and living room.

Living Room

16' 4" x 12' 2" (4.98m x 3.71m)

UPVC double glazed window to the front elevation and further double glazed window to the side elevation. Under stairs storage cupboard, wall mounted radiators and connecting door to the inner hall.

Inner Hallway

Doors lead off to the living room and open plan kitchen/dining room. Stairs rise to the first floor landing.

Kitchen/Dining Room

15' 7" x 10' 6" (4.75m x 3.20m)

Modern open plan kitchen/dining room fitted with a range of wall and base level units. Stainless steel sink and drainer with mixer tap over, set into work surfaces with complimentary up stands. Integrated appliances comprise dishwasher, washing machine, fridge/freezer, single oven and four ring hob with cooker hood over. Space for dining table and chairs, wall mounted radiator and UPVC double glazed window to the rear elevation and UPVC double glazed French doors leading out to the rear garden.. . .

First Floor Landing

Stairs rise from the inner hallway. Doors lead off to two double bedrooms and the family bathroom. Airing cupboard and further door opening to the lower landing for the master bedroom.

Bedroom Two

13' 6" x 8' 8" (4.11m x 2.64m)

UPVC double glazed window to the rear elevation. Fitted wardrobe and wall mounted radiator.

Bedroom Three

12' x 8' 8" (3.66m x 2.64m)

UPVC double glazed window to the front elevation. Fitted wardrobe and wall mounted radiator.

Family Bathroom

Modern three piece white suite comprising panelled bath with shower over and glazed shower screen, pedestal wash hand basin and low level flush w.c with complimentary tiling to splash back areas. Wall mounted heated towel rail, extractor fan and UPVC opaque double glazed window to the rear elevation.



Master Bedroom Lower Landing

Accessed from the first floor landing. UPVC double glazed window to the front elevation, wall mounted radiator and stairs rising to the master bedroom.

Master Bedroom

21' 11" x 15' 6" max (6.68m x 4.72m max)

Spacious master bedroom with UPVC double glazed window to the front elevation and two double glazed Velux windows providing a good degree of natural light. Triple fitted wardrobe and wall mounted radiator. Connecting door to the en-suite shower room.

En-Suite Shower Room

Modern three piece white suite comprising shower cubicle, pedestal wash hand basin and low level flush w.c with complimentary tiling to splash back areas. Wall mounted heated towel rail, extractor fan and double glazed Velux window.

Outside

Parking

Off road parking set to the front of the house for two cars side by side.

Rear Garden

Mainly laid to lawn with paved patio area and retaining timber fencing. Gated access to the side leads to the front of the property.

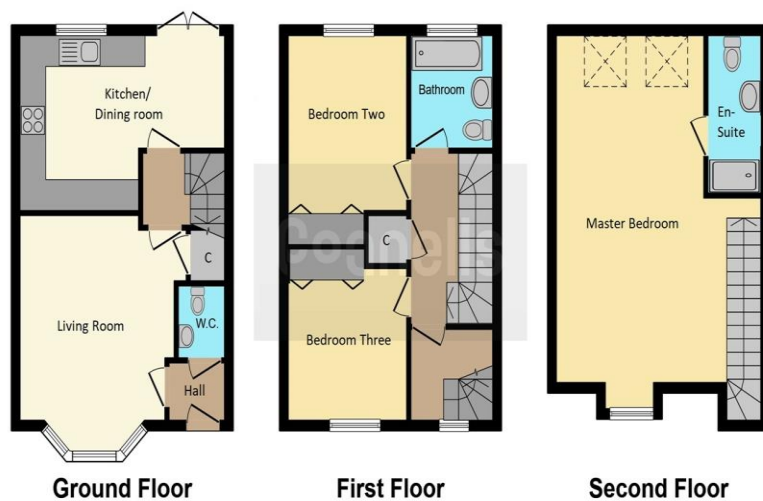
Agents Notes

The Land Registry title has yet to be updated with the Vendor's details. Please ask the branch for more details.

Council Tax Band

C





This floor plan is for illustrative purposes only. It is not drawn to scale. Any measurements, floor areas (including any total floor area), openings and orientation are approximate. No details are guaranteed, they cannot be relied upon for any purpose and they do not form part of any agreement. No liability is taken for any error, omission or misstatement. A party must rely upon its own inspection(s). Powered by www.localagent.com

To view this property please contact Connells on

T 01604 716 655
E kingsthorpe@connells.co.uk

87 Harborough Road Kingsthorpe
 NORTHAMPTON NN2 7SL

Property Ref: KTP407691 - 0003

Tenure: Freehold EPC Rating: B

Council Tax Band: C

view this property online connells.co.uk/Property/KTP407691



1. MONEY LAUNDERING REGULATIONS Intending purchasers will be asked to produce identification documentation at a later stage and we would ask for your co-operation in order that there will be no delay in agreeing the sale. 2. These particulars do not constitute part or all of an offer or contract. 3. The measurements indicated are supplied for guidance only and as such must be considered incorrect. Potential buyers are advised to recheck measurements before committing to any expense. 4. We have not tested any apparatus, equipment, fixtures, fittings or services and it is in the buyers interest to check the working condition of any appliances.

Connells Residential is registered in England and Wales under company number 1489613, Registered Office is Cumbria House, 16-20 Hockliffe Street, Leighton Buzzard, Bedfordshire, LU7 1GN. VAT Registration Number is 500 2481 05.

see all our properties at www.connells.co.uk | www.rightmove.co.uk | www.zoopla.co.uk