

for sale

£475,000



Cypress View Brington Road Long Buckby Northampton NN6 7RW

Orchard Green is an exclusive and idyllic development consisting of 4 Detached homes in the rural village of Long Buckby. These bespoke homes are predicted to have an EPC rating of B, making them particularly appealing for eco-conscious buyers. Build completion is anticipated in July 2025.

Cypress View Brington Road Long Buckby Northampton NN6 7RW

Location

Long Buckby is located around 4.5 miles north-east of the town of Daventry and roughly midway between Northampton and Rugby. The west of the parish has the A5 road, Grand Union Canal and M1 motorway all passing through. Only a short walk away, Long Buckby train station enjoys excellent rail links on the West Coast main line to both Birmingham New Street and London Euston in approximately one hour.

Long Buckby offers a wide range of amenities and services, including a doctor's surgery, dentist, churches, a public library, a veterinary surgery, a post office, community centre and a variety of shops and restaurants. Sporting facilities include Rugby, Cricket and Football clubs.

Long Buckby has an Infants School for Reception, Year 1 and Year 2 and a Junior School which takes pupils from Year 3 to Year 6. For older children, it lies within the catchment area of Guilsborough Secondary School.

Entrance Hall

Cloakroom

Living Room

Open Plan Kitchen/ Dining Room

Garden Room

Utility Room

First Floor Landing

Bedroom One

En-Suite Shower Room

Bedroom Two

Bedroom Three

Family Bathroom



Outside

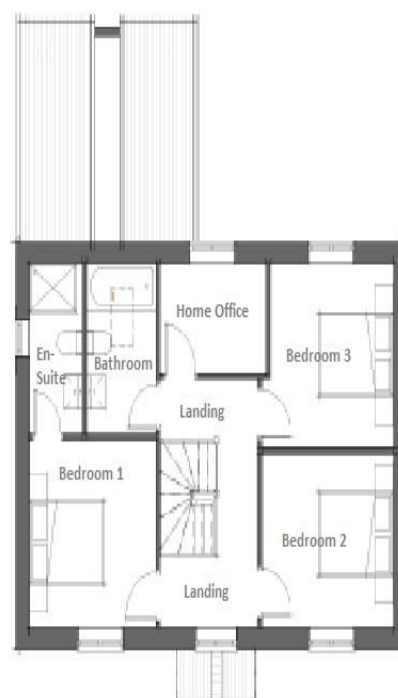
Rear Garden

Carport Plus Parking Space





GROUND FLOOR



FIRST FLOOR

To view this property please contact Connells on

T 01604 716 655
E kingsthorpe@connells.co.uk

87 Harborough Road Kingsthorpe
 NORTHAMPTON NN2 7SL

Property Ref: KTP407436 - 0005

Tenure: Freehold

EPC Rating: Exempt

view this property online [connells.co.uk/Property/KTP407436](https://www.connells.co.uk/Property/KTP407436)



1. MONEY LAUNDERING REGULATIONS Intending purchasers will be asked to produce identification documentation at a later stage and we would ask for your co-operation in order that there will be no delay in agreeing the sale. 2. These particulars do not constitute part or all of an offer or contract. 3. The measurements indicated are supplied for guidance only and as such must be considered incorrect. Potential buyers are advised to recheck measurements before committing to any expense. 4. We have not tested any apparatus, equipment, fixtures, fittings or services and it is in the buyers interest to check the working condition of any appliances.

Connells Residential is registered in England and Wales under company number 1489613, Registered Office is Cumbria House, 16-20 Hockliffe Street, Leighton Buzzard, Bedfordshire, LU7 1GN. VAT Registration Number is 500 2481 05.

see all our properties at www.connells.co.uk | www.rightmove.co.uk | www.zoopla.co.uk