



**Connells**

Hastings Road  
Kingsthorpe Northampton



## Property Description

Set in the popular location of Kingsthorpe is this three bedroom mid-terrace property offered to the market with NO UPWARD CHAIN. The property provides entrance porch, lounge, kitchen and utility room. To the first floor are three bedrooms and a family bathroom.

### Entrance Porch

Entered via door to front elevation, door to:-

### Hallway

Stairs rising to first floor, wall mounted radiator, door to:-

### Lounge

13' 5" x 13' ( 4.09m x 3.96m )

Double glazed window to front elevation, TV point, wall mounted radiator, door to:-

### Kitchen

16' 1" x 6' 1" ( 4.90m x 1.85m )

Double glazed window to rear elevation, fitted with a range of wall and base units with wooden work surface over, one and half stainless steel sink and drainer with mixer tap over, integrated four ring gas hob with oven below, splash back and extractor over, space for fridge freezer, wall mounted combination boiler, wall mounted radiator, understairs storage cupboard, door to:-

### Utility

Double glazed door to rear elevation, plumbing for washing machine, space for tumble dryer,

### First Floor Landing

Doors to:-

### Bedroom One

12' 1" x 11' 1" ( 3.68m x 3.38m )

Double glazed window to front elevation with wall mounted radiator below.

### Bedroom Two

9' 1" x 7' 11" ( 2.77m x 2.41m )

Two double glazed windows to front elevation, wall mounted radiator.

### Bedroom Three

8' 2" x 7' 6" ( 2.49m x 2.29m )

Double glazed window to rear elevation with wall mounted radiator below.

### Bathroom

Two double glazed windows to rear elevation, white suite comprising of corner panelled bath with mixer taps and shower over, low level wc, pedestal wash hand basin, tiled splash back areas, wall mounted radiator.

## Outside Front

Wall and shrub borders, path to front porch and a shared gated access leading to:-

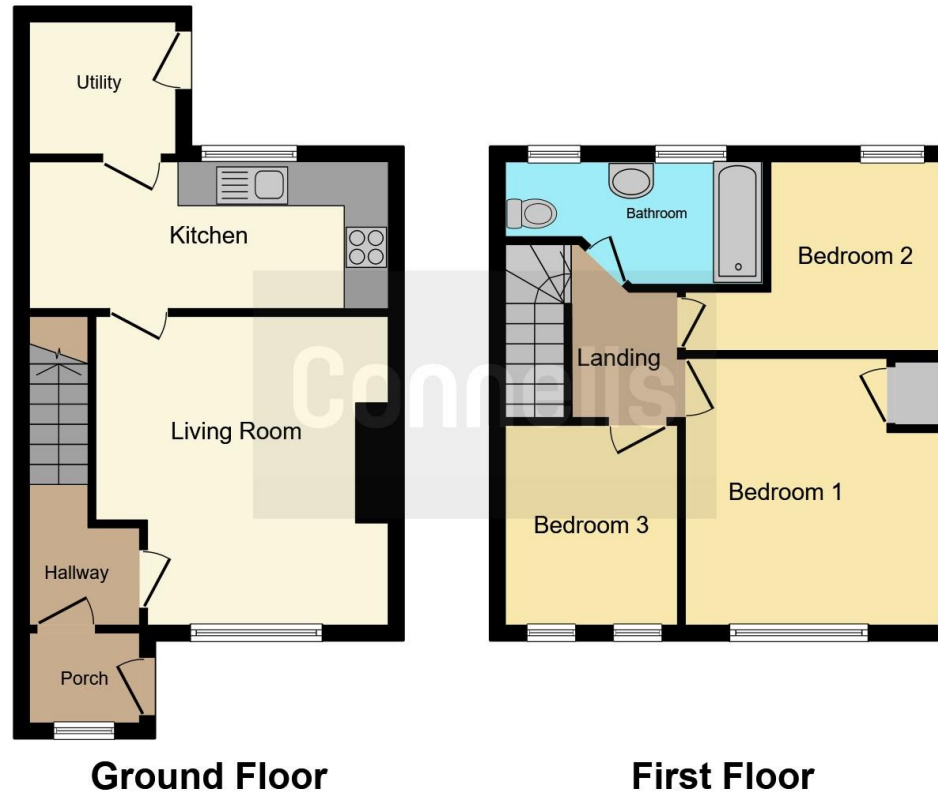
## Rear Garden

Mainly laid to lawn with a good sized patio and mature hedging.









This floor plan is for illustrative purposes only. It is not drawn to scale. Any measurements, floor areas (including any total floor area), openings and orientation are approximate. No details are guaranteed, they cannot be relied upon for any purpose and they do not form part of any agreement. No liability is taken for any error, omission or misstatement. A party must rely upon its own inspection(s). Powered by [www.focalagent.com](http://www.focalagent.com)

To view this property please contact Connells on

**T 01604 716 655**  
**E [kingsthorpe@connells.co.uk](mailto:kingsthorpe@connells.co.uk)**

87 Harborough Road Kingsthorpe  
 NORTHAMPTON NN2 7SL

**EPC Rating: D**

Tenure: Freehold

**view this property online [connells.co.uk/Property/KTP407094](http://connells.co.uk/Property/KTP407094)**



1. MONEY LAUNDERING REGULATIONS Intending purchasers will be asked to produce identification documentation at a later stage and we would ask for your co-operation in order that there will be no delay in agreeing the sale. 2. These particulars do not constitute part or all of an offer or contract. 3. The measurements indicated are supplied for guidance only and as such must be considered incorrect. Potential buyers are advised to recheck measurements before committing to any expense. 4. We have not tested any apparatus, equipment, fixtures, fittings or services and it is in the buyers interest to check the working condition of any appliances.

Connells Residential is registered in England and Wales under company number 1489613, Registered Office is Cumbria House, 16-20 Hockliffe Street, Leighton Buzzard, Bedfordshire, LU7 1GN. VAT Registration Number is 500 2481 05.

**See all our properties at [www.connells.co.uk](http://www.connells.co.uk) | [www.rightmove.co.uk](http://www.rightmove.co.uk) | [www.zoopla.co.uk](http://www.zoopla.co.uk)**

Property Ref: KTP407094 - 0003