



Connells

Moorfield Square
Northampton



Property Description

This well-maintained apartment is perfect for both first-time buyers ready to make their mark in the property market and investors looking for a solid addition to their portfolio. The open-plan living space creates a welcoming atmosphere, while the abundance of storage options ensures you have plenty of space for all your belongings.

We highly recommend an internal viewing to fully appreciate the modern finishes and layout that this flat has to offer.

Entrance Hall

Enter via wooden door to the front aspect. Wall mounted radiator. Three storage cupboards.

Lounge / Diner

13' 3" x 13' 8" (4.04m x 4.17m)

Double glazed windows to the rear aspect. TV point.

Kitchen

6' 8" x 12' 3" (2.03m x 3.73m)

Wall and base units. Sink and drainer units. Space for white goods. Wall mounted radiators. Combi boiler. Double glazed window to the front aspect.

Bedroom One

9' 8" x 10' 8" (2.95m x 3.25m)

Double glazed window to the rear aspect. Wall mounted radiator.

Bedroom Two

9' 4" x 6' 4" (2.84m x 1.93m)

Double glazed window to the front aspect. Wall mounted radiator.

Bathroom

Bath with shower over, wash hand basin and low level WC. Towel rail radiator. Double glazed window to the front aspect.

Outside

Rear Garden

Communal Garden.

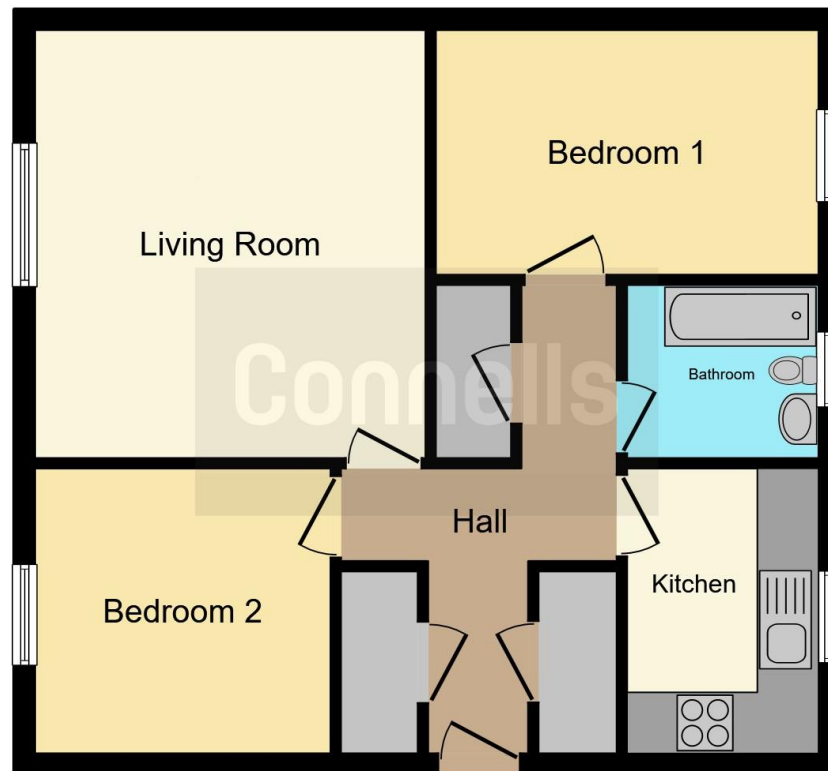
Parking

On street parking.









This floor plan is for illustrative purposes only. It is not drawn to scale. Any measurements, floor areas (including any total floor area), openings and orientation are approximate. No details are guaranteed, they cannot be relied upon for any purpose and they do not form part of any agreement. No liability is taken for any error, omission or misstatement. A party must rely upon its own inspection(s). Powered by www.focalagent.com

To view this property please contact Connells on

T 01604 638 281
E northampton@connells.co.uk

6 Wood Hill
 NORTHAMPTON NN1 2DA

EPC Rating: C

Tenure: Leasehold

view this property online connells.co.uk/Property/NHT413601

This is a Leasehold property. We are awaiting further details about the Term of the lease. For further information please contact the branch. Please note additional fees could be incurred for items such as Leasehold packs.



1. MONEY LAUNDERING REGULATIONS Intending purchasers will be asked to produce identification documentation at a later stage and we would ask for your co-operation in order that there will be no delay in agreeing the sale. 2. These particulars do not constitute part or all of an offer or contract. 3. The measurements indicated are supplied for guidance only and as such must be considered incorrect. Potential buyers are advised to recheck measurements before committing to any expense. 4. We have not tested any apparatus, equipment, fixtures, fittings or services and it is in the buyers interest to check the working condition of any appliances.

Connells Residential is registered in England and Wales under company number 1489613, Registered Office is Cumbria House, 16-20 Hockliffe Street, Leighton Buzzard, Bedfordshire, LU7 1GN. VAT Registration Number is 500 2481 05.

See all our properties at www.connells.co.uk | www.rightmove.co.uk | www.zoopla.co.uk

Property Ref: NHT413601 - 0003