



Connells

Weedon Road
Northampton



Property Description

Connells are excited to present this beautifully refurbished traditional two-bedroom semi-detached house that perfectly combines charm, modern amenities, and an unbeatable location. Ideal for first-time buyers, families, or investors, this property offers everything you need for comfortable living.

Fully Refurbished: This home has been thoughtfully renovated, showcasing a blend of traditional features and modern finishes.

The cellar currently offers ample space, and with the right planning and building permissions, it has the potential to be converted into an additional bedroom. This transformation could significantly enhance the living space of your home.

The property features two shower rooms, providing a fantastic opportunity to reconfigure the space. This layout allows for the possibility of knocking through to create a larger, unified bathing area, or alternatively, it offers the option of maintaining separate shower rooms to serve each bedroom individually.

Inviting Gardens: The property boasts both a front and rear garden, perfect for outdoor relaxation or gardening enthusiasts.

Prime Location: Conveniently situated just a short distance from Northampton train station, making commuting a breeze. Also, enjoy the proximity to The Saints rugby club, perfect for sports fans.

No Upward Chain: Move in with ease – a hassle-free purchase with no lengthy waits!



Entrance Hall

Enter door to the front aspect. Two wall mounted radiators. Fuse board.

Lounge

15' 6" x 16' 11" (4.72m x 5.16m)

Enter via double glazed door to the front aspect. Bay double glazed windows to either side. Wall mounted radiator.

Kitchen

23' 1" max x 8' 10" max (7.04m max x 2.69m max)

Wall and base units. Worksurfaces. Sink and drainer unit. Space for white goods. Electric hob with hood over. Double glazed bay window side aspect.

Cellar

14' 4" max x 16' (4.37m max x 4.88m)

Fuse board. Gas meter.

Bedroom One

12' 4" x 14' 1" (3.76m x 4.29m)

Double glazed window to the rear and side aspect. Wall mounted radiator.

Bedroom Two

9' 11" x 13' 2" (3.02m x 4.01m)

Double glazed door and window to the rear aspect. Wall mounted radiator.

Bathroom

Shower cubicle, wash hand basin and low level WC. Wall mounted radiator. Skylight.

Wc

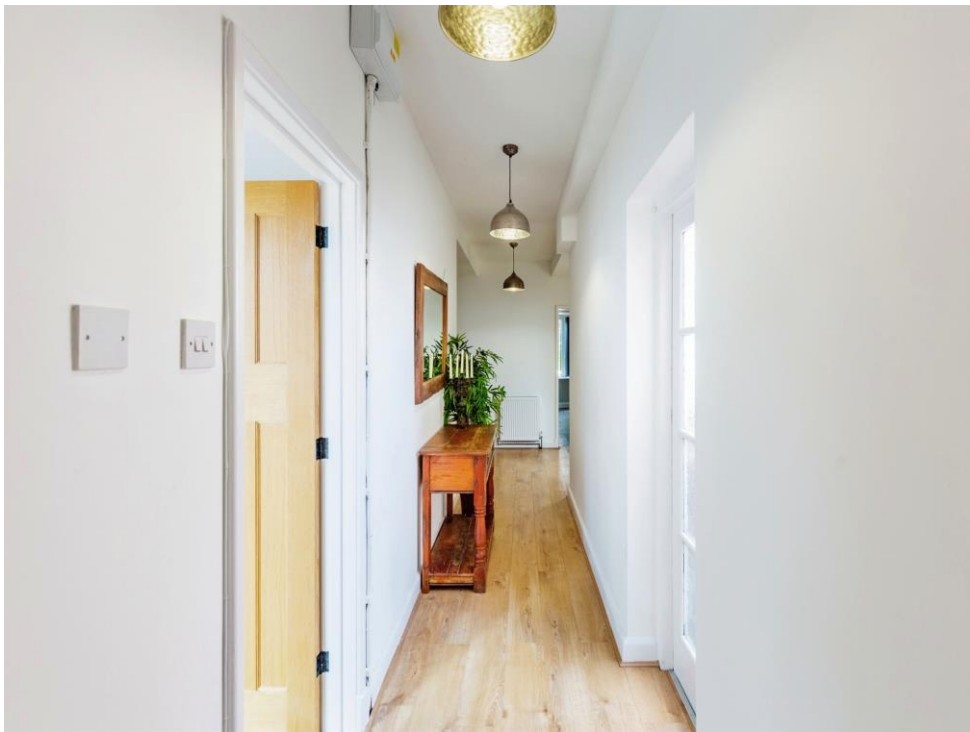
Low level WC and wash hand basin.

Outside

Rear Garden

Rear access. Path. laid to lawn. Enclosed by fencing.









This floor plan is for illustrative purposes only. It is not drawn to scale. Any measurements, floor areas (including any total floor area), openings and orientation are approximate. No details are guaranteed, they cannot be relied upon for any purpose and they do not form part of any agreement. No liability is taken for any error, omission or misstatement. A party must rely upon its own inspection(s). Powered by www.focalagent.com

To view this property please contact Connells on

T 01604 638 281
E northampton@connells.co.uk

6 Wood Hill
 NORTHAMPTON NN1 2DA

EPC Rating: D

Tenure: Freehold

view this property online connells.co.uk/Property/NHT413148



1. MONEY LAUNDERING REGULATIONS Intending purchasers will be asked to produce identification documentation at a later stage and we would ask for your co-operation in order that there will be no delay in agreeing the sale. 2. These particulars do not constitute part or all of an offer or contract. 3. The measurements indicated are supplied for guidance only and as such must be considered incorrect. Potential buyers are advised to recheck measurements before committing to any expense. 4. We have not tested any apparatus, equipment, fixtures, fittings or services and it is in the buyers interest to check the working condition of any appliances.

Connells Residential is registered in England and Wales under company number 1489613, Registered Office is Cumbria House, 16-20 Hockliffe Street, Leighton Buzzard, Bedfordshire, LU7 1GN. VAT Registration Number is 500 2481 05.

See all our properties at www.connells.co.uk | www.rightmove.co.uk | www.zoopla.co.uk

Property Ref: NHT413148 - 0007