



Connells
01534 638 218
FOR SALE

Connells

Radleigh Close
Northampton



Property Description

Accommodation comprises entrance hall, spacious lounge, open plan kitchen/dining room, two double bedrooms and a bathroom. Externally, the property has a private rear garden, front garden and driveway providing off street parking for multiple vehicles. Viewing is highly advised to fully appreciate the property.

Lounge

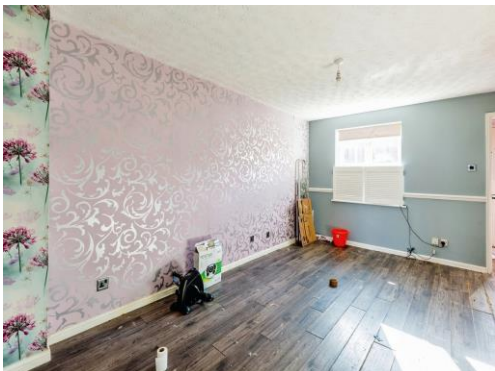
15' 11" max x 12' 6" max (4.85m max x 3.81m max)

Window to the front aspect. Wall mounted radiator. Understairs storage cupboard.

Kitchen

12' 6" x 8' 8" (3.81m x 2.64m)

Wall and base units. Worksurfaces. Sink and drainer unit. Space for washing machine and fridge-freezer. Gas hob and electric oven. Window to the rear aspect. Double glazed French doors to the rear aspect. Storage cupboard. Wall mounted radiator.



Bedroom One

9' 4" x 12' 6" max (2.84m x 3.81m max)

Window the rear aspect. Built-in wardrobes. Wall mounted radiator.

Bedroom Two

12' 6" max x 8' 9" max (3.81m max x 2.67m max)

Two windows to the front aspect. Wall mounted radiator. Storage cupboard.

Bathroom

Bath with electric shower over, wash hand basin and low level WC. Wall mounted radiator. Window to the side aspect.

Outside

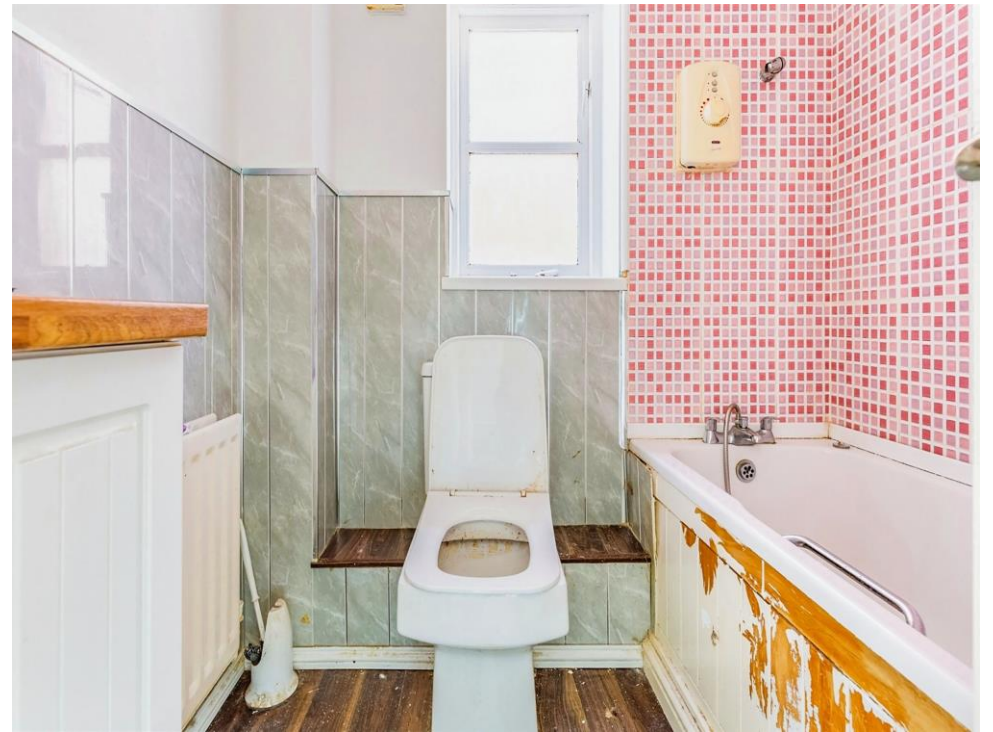
Rear Garden

Lawn. Enclosed by fencing. Gated side access.

Driveway

Driveway to side.









This floor plan is for illustrative purposes only. It is not drawn to scale. Any measurements, floor areas (including any total floor area), openings and orientation are approximate. No details are guaranteed, they cannot be relied upon for any purpose and they do not form part of any agreement. No liability is taken for any error, omission or misstatement. A party must rely upon its own inspection(s). Powered by www.focalagent.com

To view this property please contact Connells on

T 01604 638 281
E northampton@connells.co.uk

6 Wood Hill
 NORTHAMPTON NN1 2DA

EPC Rating: D

Tenure: Freehold

view this property online connells.co.uk/Property/NHT413122



1. MONEY LAUNDERING REGULATIONS Intending purchasers will be asked to produce identification documentation at a later stage and we would ask for your co-operation in order that there will be no delay in agreeing the sale. 2. These particulars do not constitute part or all of an offer or contract. 3. The measurements indicated are supplied for guidance only and as such must be considered incorrect. Potential buyers are advised to recheck measurements before committing to any expense. 4. We have not tested any apparatus, equipment, fixtures, fittings or services and it is in the buyers interest to check the working condition of any appliances.

Connells Residential is registered in England and Wales under company number 1489613, Registered Office is Cumbria House, 16-20 Hockliffe Street, Leighton Buzzard, Bedfordshire, LU7 1GN. VAT Registration Number is 500 2481 05.

See all our properties at www.connells.co.uk | www.rightmove.co.uk | www.zoopla.co.uk

Property Ref: NHT413122 - 0005