



**Connells**

Links Road  
Kibworth Beauchamp Leicester



# Links Road Kibworth Beauchamp Leicester LE8 0LD

for sale offers in the region of  
**£425,000**



## Property Description

A generous modern four bedroomed detached family home with a garage located in this ever-popular south Leicestershire village, just a few minutes walk from the village centre.

Accommodation - Ground Floor-The property offers practical family living across two spacious floors. On arrival, a welcoming reception hall with a contemporary front door and a window creates an immediate sense of light and space. To your left, the spacious lounge provides the perfect setting for relaxation and the door to the dining room, good size kitchen with a utility room.

First Floor: Four good sized bedrooms, including a master bedroom with en-suite bathroom. A beautifully appointed family bathroom serves the other bedrooms.

Outside: Garage and driveway for 3 cars. A good size most overlooked rear garden.

Kibworth Beauchamp and Kibworth Harcourt offer an excellent range of daily amenities including a good range of shops, post office, medical centres, CO-OP supermarkets, boutiques and pubs and restaurants. The village has a thriving community that can enjoy a number of sports/leisure facilities including cricket, bowling, tennis and an 18-hole golf course.

There is also a highly regarded Kibworth Primary School, rated Outstanding by Ofsted. There are excellent road networks leading to J20 of the M1, whilst the M69, M6 and M42 are all accessible from junction 21 of the M1. For the commuter, London, St Pancras, is

accessible from both Leicester and Market Harborough train stations.

## Entrance Hallway

## Lounge

21' 9" max x 12' 2" ( 6.63m max x 3.71m )

Storage Cupboard

## Dining Room

## Kitchen

12' 1" x 9' ( 3.68m x 2.74m )

## Utility Room

5' x 8' ( 1.52m x 2.44m )

## Landing

## Bedroom One

15' 11" x 9' 11" ( 4.85m x 3.02m )

Storage

## En-Suite

Fully tiled, Shower, WC and basin

## Bedroom Two

20' 11" max x 8' ( 6.38m max x 2.44m )

Storage cupboard, windows both side and potential to have an en-suite.

## Bedroom Three

12' 2" x 6' 3" ( 3.71m x 1.91m )

## Bedroom Four

9' 11" x 9' 10" ( 3.02m x 3.00m )

### Bedroom Four

9' 11" x 9' 10" ( 3.02m x 3.00m )

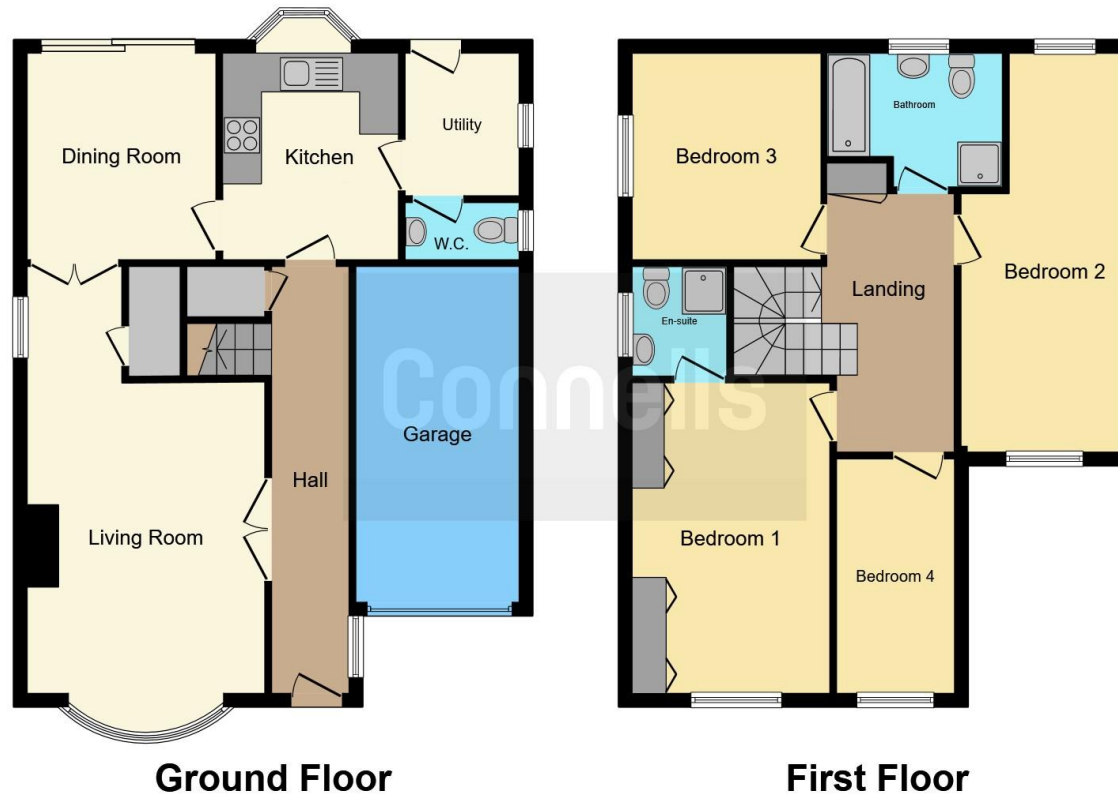












This floor plan is for illustrative purposes only. It is not drawn to scale. Any measurements, floor areas (including any total floor area), openings and orientation are approximate. No details are guaranteed, they cannot be relied upon for any purpose and they do not form part of any agreement. No liability is taken for any error, omission or misstatement. A party must rely upon its own inspection(s). Powered by [www.focalagent.com](http://www.focalagent.com)

To view this property please contact Connells on

**T 01858 465 921**  
**E [marketharborough@connells.co.uk](mailto:marketharborough@connells.co.uk)**

11 St. Marys Road  
 MARKET HARBOROUGH LE16 7DS

EPC Rating: C Council Tax  
 Band: A

Tenure: Freehold

**view this property online [connells.co.uk/Property/MKH308164](http://connells.co.uk/Property/MKH308164)**



1. MONEY LAUNDERING REGULATIONS Intending purchasers will be asked to produce identification documentation at a later stage and we would ask for your co-operation in order that there will be no delay in agreeing the sale. 2. These particulars do not constitute part or all of an offer or contract. 3. The measurements indicated are supplied for guidance only and as such must be considered incorrect. Potential buyers are advised to recheck measurements before committing to any expense. 4. We have not tested any apparatus, equipment, fixtures, fittings or services and it is in the buyers interest to check the working condition of any appliances.

Connells Residential is registered in England and Wales under company number 1489613, Registered Office is Cumbria House, 16-20 Hockliffe Street, Leighton Buzzard, Bedfordshire, LU7 1GN. VAT Registration Number is 500 2481 05.

**See all our properties at [www.connells.co.uk](http://www.connells.co.uk) | [www.rightmove.co.uk](http://www.rightmove.co.uk) | [www.zoopla.co.uk](http://www.zoopla.co.uk)**

Property Ref: MKH308164 - 0009