



Connells

Bradford Street
Market Harborough



Property Description

This charming property located in the sort-after location of Bradford Street, is entered via a part glazed front door into an entrance hall with a WC. To the left you will find the kitchen diner which has a window to the front elevation and benefits from a range of eye and base level cupboards and drawers. Zanussi appliances include a four ring gas hob with extractor hood over, oven and integrated fridge freezer. To the rear of the entrance hall is the sitting room which is a lovely bright and airy room by virtue of a square bay window to the rear with French doors opening out to a paved patio area, perfect for those looking for a blend of indoor outdoor living.

Stairs rise to the first floor landing of which there is an airing cupboard. Bedrooms three and four are to the front of the property with bedroom two to the rear enjoying views over the garden. The family bathroom can be located on the first floor and comprises of a WC, wash hand basin shower and bath.

The master bedroom suite on the second floor completes the accommodation and benefits from a window to the front elevation allowing light to flood through the room. The master bedroom also offers eaves storage, a walk-in dressing room and an ensuite comprising of a WC, wash hand basin, and shower.

Entrance Hallway

17' 1" x 3' 4" (5.21m x 1.02m)

Kitchen / Dining Room

17' x 8' 6" (5.18m x 2.59m)

Lounge

12' 4" x 15' 6" (3.76m x 4.72m)

Downstairs WC

Landing To First Floor

Bedroom Two

12' 4" x 15' 6" (3.76m x 4.72m)

Bedroom Three

10' 5" x 8' 2" (3.17m x 2.49m)

Bedroom Four

7' x 7' (2.13m x 2.13m)

Bathroom

4' 9" x 10' 2" (1.45m x 3.10m)

Landing To Second Floor

Bedroom One

11' 11" x 11' 8" (3.63m x 3.56m)

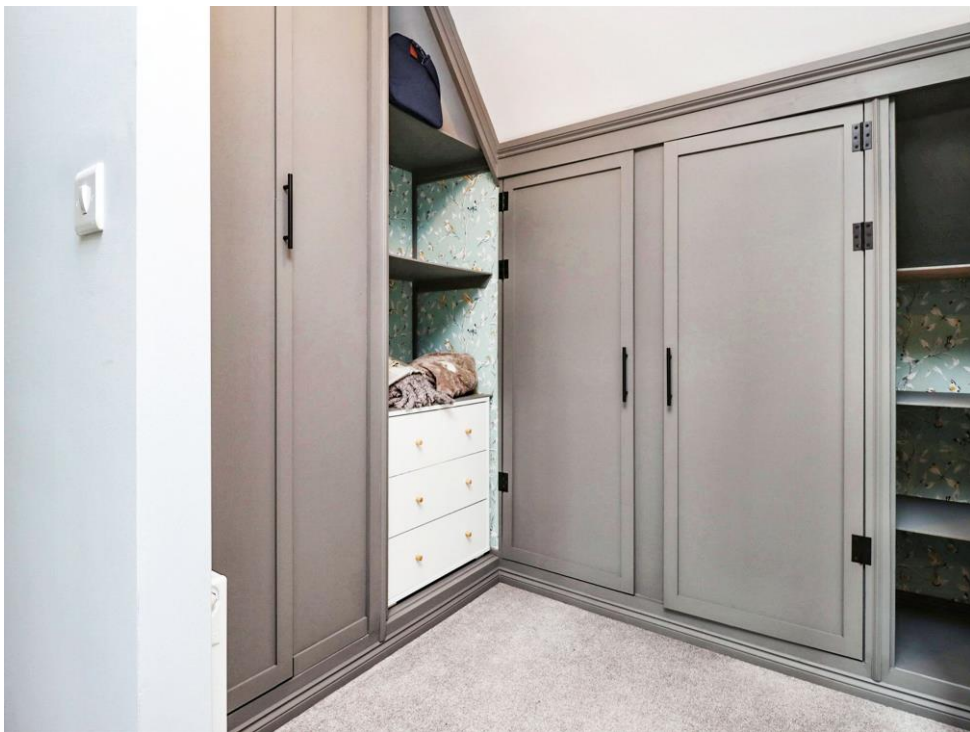
Dressing Area

5' 2" x 7' 7" (1.57m x 2.31m)

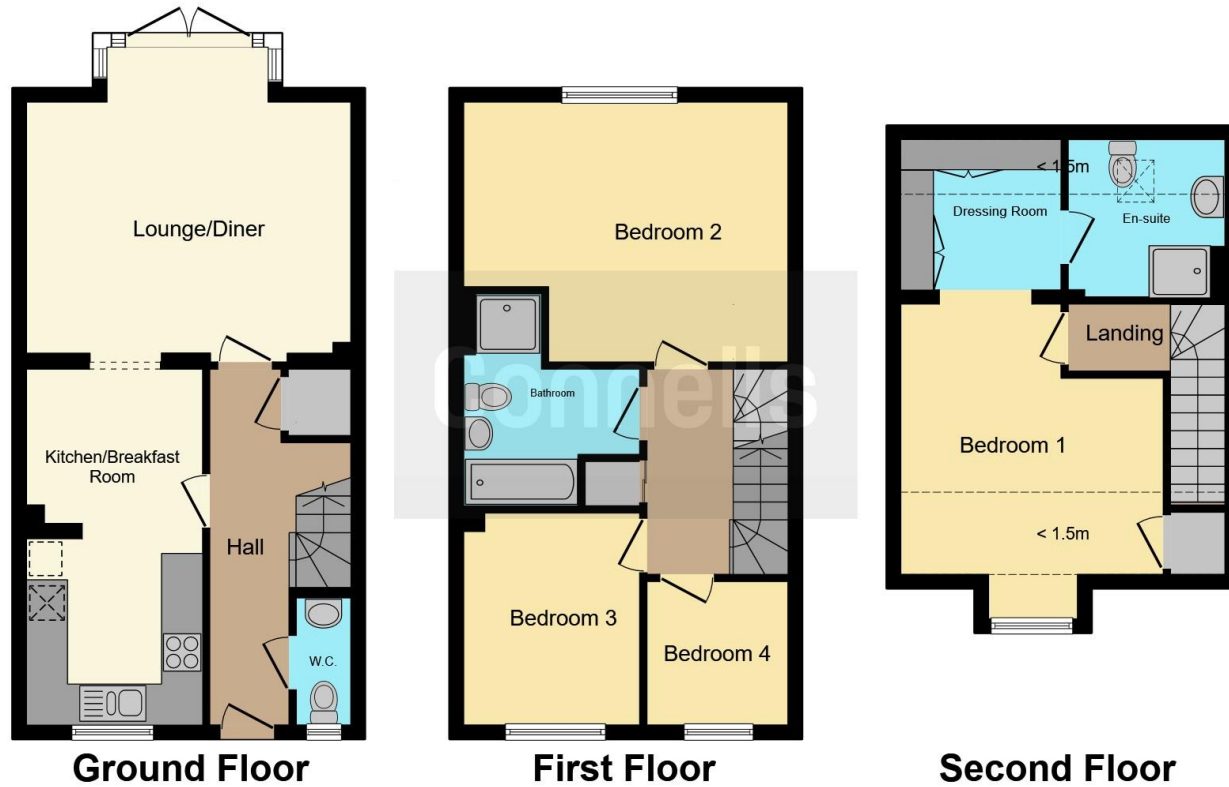
En-Suite

7' 7" x 7' 7" (2.31m x 2.31m)









This floor plan is for illustrative purposes only. It is not drawn to scale. Any measurements, floor areas (including any total floor area), openings and orientation are approximate. No details are guaranteed, they cannot be relied upon for any purpose and they do not form part of any agreement. No liability is taken for any error, omission or misstatement. A party must rely upon its own inspection(s). Powered by www.focalagent.com

To view this property please contact Connells on

T 01858 465 921
E marketharborough@connells.co.uk

11 St. Marys Road
 MARKET HARBOROUGH LE16 7DS

EPC Rating: B

Tenure: Freehold

view this property online connells.co.uk/Property/MKH307591



1. MONEY LAUNDERING REGULATIONS Intending purchasers will be asked to produce identification documentation at a later stage and we would ask for your co-operation in order that there will be no delay in agreeing the sale. 2. These particulars do not constitute part or all of an offer or contract. 3. The measurements indicated are supplied for guidance only and as such must be considered incorrect. Potential buyers are advised to recheck measurements before committing to any expense. 4. We have not tested any apparatus, equipment, fixtures, fittings or services and it is in the buyers interest to check the working condition of any appliances.

Connells Residential is registered in England and Wales under company number 1489613, Registered Office is Cumbria House, 16-20 Hockliffe Street, Leighton Buzzard, Bedfordshire, LU7 1GN. VAT Registration Number is 500 2481 05.

See all our properties at www.connells.co.uk | www.rightmove.co.uk | www.zoopla.co.uk

Property Ref: MKH307591 - 0005