



**Connells**

Thornton Crescent  
Church Langton Market Harborough



# Thornton Crescent Church Langton Market Harborough LE16 7TA

for sale guide price  
**£357,500**



## Property Description

Nestled in the serene locale of Church Langton, this delightful semi-detached house offers a perfect blend of comfort and peace. Boasting three spacious bedrooms, ideal for families. The large driveway and expansive garage provide ample parking and storage solutions, catering to a modern lifestyle. With its peaceful surroundings and well-maintained interiors, this home invites residents to unwind and embrace the serenity of countryside living.

The village of Church Langton is 4 miles north of Market Harborough and is surrounded by the small satellite villages of East & West Langton, Thorpe Langton and Tur Langton. The area is known as 'the Langtons' and is popular with walkers, cyclists and those looking for a quieter part of Leicestershire rather than the busy city and suburbs.

## Hallway

## Lounge

19' 1" x 12' 11" ( 5.82m x 3.94m )

## Kitchen

15' 4" x 11' 9" ( 4.67m x 3.58m )

## Conservatory

8' 8" x 12' 2" ( 2.64m x 3.71m )



## Landing

## Bedroom One

8' 11" x 12' 11" ( 2.72m x 3.94m )

## Bedroom Two

7' 8" x 14' 9" ( 2.34m x 4.50m )

## Bedroom Three

9' 11" x 6' 10" ( 3.02m x 2.08m )

## Bathroom

5' 6" x 8' 4" ( 1.68m x 2.54m )

## Single Garage

24' x 12' 8" ( 7.32m x 3.86m )



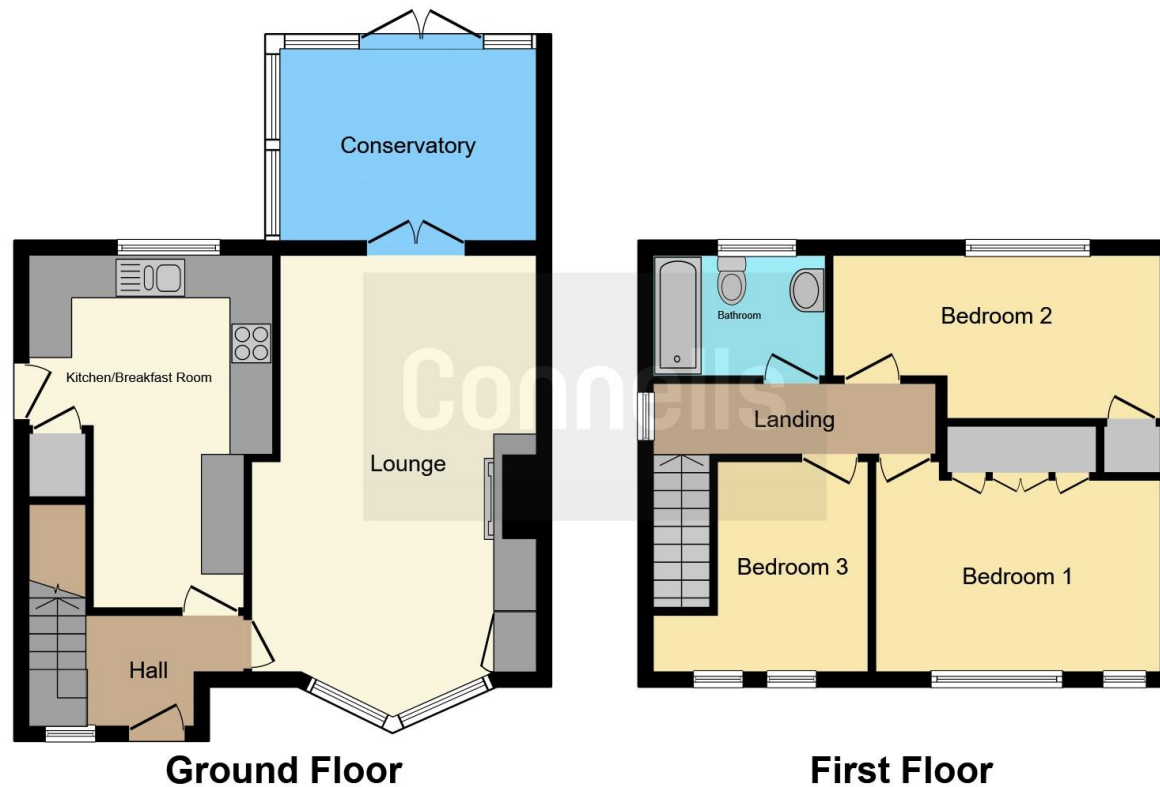












This floor plan is for illustrative purposes only. It is not drawn to scale. Any measurements, floor areas (including any total floor area), openings and orientation are approximate. No details are guaranteed, they cannot be relied upon for any purpose and they do not form part of any agreement. No liability is taken for any error, omission or misstatement. A party must rely upon its own inspection(s). Powered by [www.focalagent.com](http://www.focalagent.com)

To view this property please contact Connells on

**T 01858 465 921**  
**E [marketharborough@connells.co.uk](mailto:marketharborough@connells.co.uk)**

11 St. Marys Road  
 MARKET HARBOROUGH LE16 7DS

**EPC Rating: C**

Tenure: Freehold

**view this property online [connells.co.uk/Property/MKH307570](http://connells.co.uk/Property/MKH307570)**



1. MONEY LAUNDERING REGULATIONS Intending purchasers will be asked to produce identification documentation at a later stage and we would ask for your co-operation in order that there will be no delay in agreeing the sale. 2. These particulars do not constitute part or all of an offer or contract. 3. The measurements indicated are supplied for guidance only and as such must be considered incorrect. Potential buyers are advised to recheck measurements before committing to any expense. 4. We have not tested any apparatus, equipment, fixtures, fittings or services and it is in the buyers interest to check the working condition of any appliances.

Connells Residential is registered in England and Wales under company number 1489613, Registered Office is Cumbria House, 16-20 Hockliffe Street, Leighton Buzzard, Bedfordshire, LU7 1GN. VAT Registration Number is 500 2481 05.

**See all our properties at [www.connells.co.uk](http://www.connells.co.uk) | [www.rightmove.co.uk](http://www.rightmove.co.uk) | [www.zoopla.co.uk](http://www.zoopla.co.uk)**

Property Ref: MKH307570 - 0003