



Connells

Hawfinch Green
Desborough Kettering



Property Description

This stunning 5-bedroom detached house in Desborough offers an ideal blend of comfort and elegance. Boasting private parking and a garage, convenience meets style. The well-decorated interior spans three floors, ensuring spacious rooms throughout. The property's charm is elevated by its picturesque location overlooking an open green, adding a touch of tranquility to this exquisite residence. Welcome to a home that harmoniously combines functionality with aesthetic appeal.

Lounge / Diner

13' 7" x 19' 6" (4.14m x 5.94m)

Kitchen / Breakfast Room

10' 7" x 13' 5" (3.23m x 4.09m)

Utility Room

5' 7" x 4' 4" (1.70m x 1.32m)

Cloakroom

3' 6" x 5' 7" (1.07m x 1.70m)

Bedroom One

8' 4" x 13' 5" (2.54m x 4.09m)

Ensuite

8' 4" x 5' 7" (2.54m x 1.70m)

Bedroom Two

19' 3" x 13' 7" (5.87m x 4.14m)

Bedroom Three

19' 3" x 8' 4" (5.87m x 2.54m)

Bedroom Four

13' 7" x 8' 4" (4.14m x 2.54m)

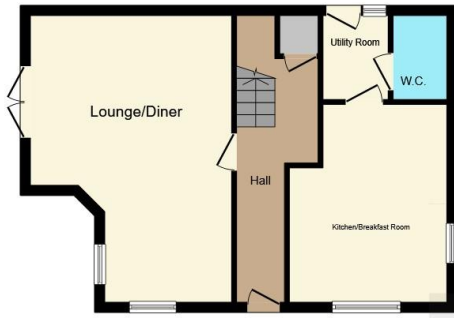
Bedroom Five

10' 8" x 10' 4" (3.25m x 3.15m)

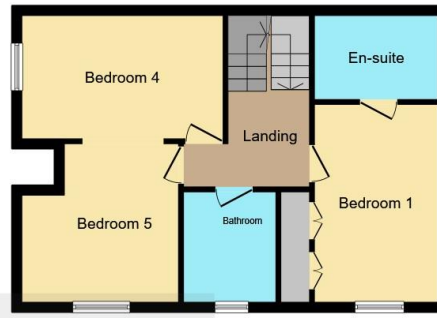
Bathroom

6' 2" x 7' 5" (1.88m x 2.26m)

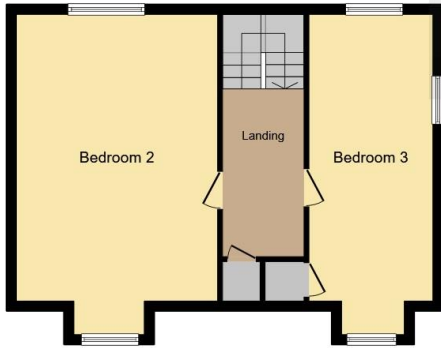




Ground Floor



First Floor



Second Floor

Connells



This floorplan is for illustrative purposes only and is not drawn to scale. Measurements, floor-areas, openings and orientations are approximate. They should not be relied upon for any purpose and do not form any part of an agreement. No liability is taken for any error or mis-statement. All parties must rely on their own inspections.

To view this property please contact Connells on

T 01858 465 921

E marketharborough@connells.co.uk

11 St. Marys Road
MARKET HARBOROUGH LE16 7DS

EPC Rating: C

view this property online connells.co.uk/Property/MKH307428

Tenure: Freehold



1. MONEY LAUNDERING REGULATIONS Intending purchasers will be asked to produce identification documentation at a later stage and we would ask for your co-operation in order that there will be no delay in agreeing the sale. 2. These particulars do not constitute part or all of an offer or contract. 3. The measurements indicated are supplied for guidance only and as such must be considered incorrect. Potential buyers are advised to recheck measurements before committing to any expense. 4. We have not tested any apparatus, equipment, fixtures, fittings or services and it is in the buyers interest to check the working condition of any appliances.

Connells Residential is registered in England and Wales under company number 1489613, Registered Office is Cumbria House, 16-20 Hockliffe Street, Leighton Buzzard, Bedfordshire, LU7 1GN. VAT Registration Number is 500 2481 05.

See all our properties at www.connells.co.uk | www.rightmove.co.uk | www.zoopla.co.uk

Property Ref: MKH307428 - 0003