



Connells

Bearsden Crescent
Hinckley

Bearsden Crescent Hinckley LE10 0SQ

for sale offers in excess of
£300,000



Property Description

Nestled at the end of a tranquil crescent in the sought-after Hollycroft area, offers a perfect blend of suburban peace and everyday convenience. This popular residential locale is ideal for families, professionals, or downsizers seeking a well-connected, community-oriented environment.

Within a short stroll you'll find convenience stores, cafes, and eateries. Hinckley town centre and The Crescent Shopping Centre are just a few minutes' drive away, offering supermarkets, high-street retailers, a cinema, gym, and a diverse selection of restaurants.

Commuters benefit from superb connectivity- Hinckley railway station is close by with regular services to Leicester and Birmingham, while the A5, M69, and M1 motorways can be reached in minutes for easy travel across the Midlands.

The area is well served by reputable schools and nurseries. Local primaries and secondaries in Hinckley cater to all ages, making this an excellent choice for families.

Outdoor living is a joy with Hollycroft Park on your doorstep- featuring playgrounds, sports pitches, and walking paths- and the nearby Burbage Common offering acres of woodland and heathland to explore.

Ground Floor

Hallway

12' 11" x 5' (3.94m x 1.52m)

With wooden flooring and downstairs cupboard.

Lounge

13' 9" x 11' (4.19m x 3.35m)

With wooden flooring and double-glazed window to the front.

Dining Room

15' 9" x 8' 5" (4.80m x 2.57m)

With wooden flooring and patio door to the rear garden.

Kitchen

15' 1" x 7' 8" (4.60m x 2.34m)

Fully fitted kitchen with a range of wall and base units, sink unit with double-glazed window to the rear. With an access to utility and W/C.

Utility Room

12' 10" x 6' 2" (3.91m x 1.88m)

With a range of wall and base units, sink unit and plumbing for washing machine and dishwasher.

First Floor

Bedroom 1

12' 5" x 9' 6" (3.78m x 2.90m)

With window to the front.

Bedroom 2

10' 6" x 10' 4" (3.20m x 3.15m)

With window to the rear.

Bedroom 3

12' 10" x 6' 3" (3.91m x 1.91m)

With window to the front.

Bedroom 4

8' x 6' 9" (2.44m x 2.06m)

With window to the front.

Bedroom 5

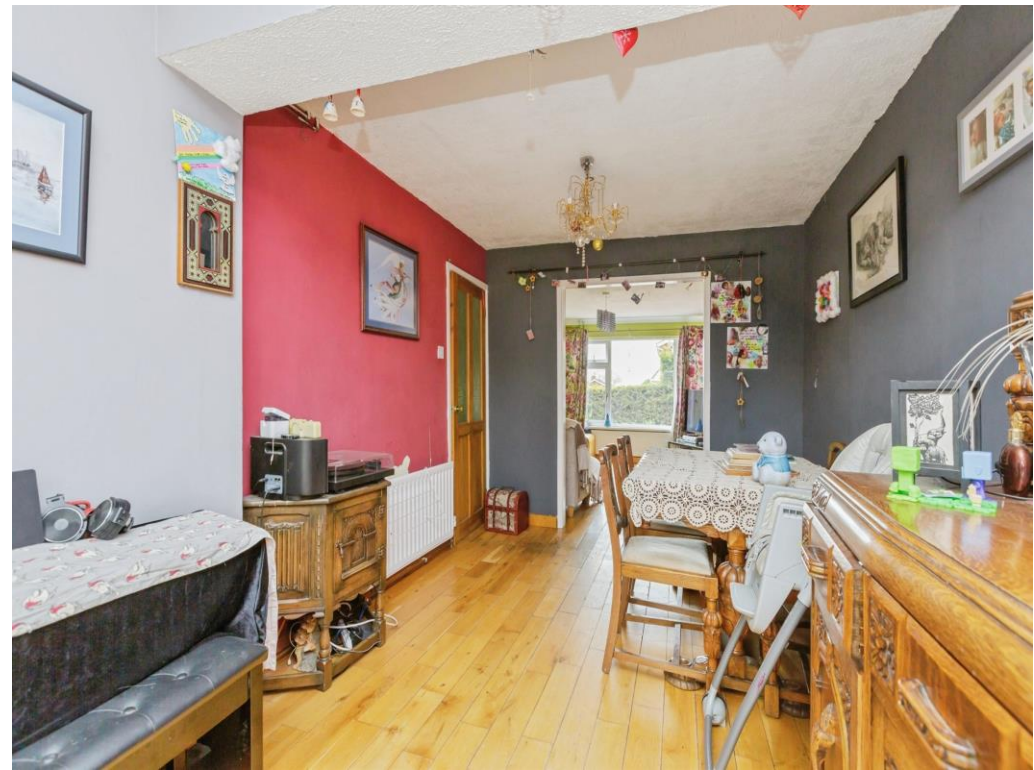
7' 4" x 6' 2" (2.24m x 1.88m)

With window to the rear.

Bathroom

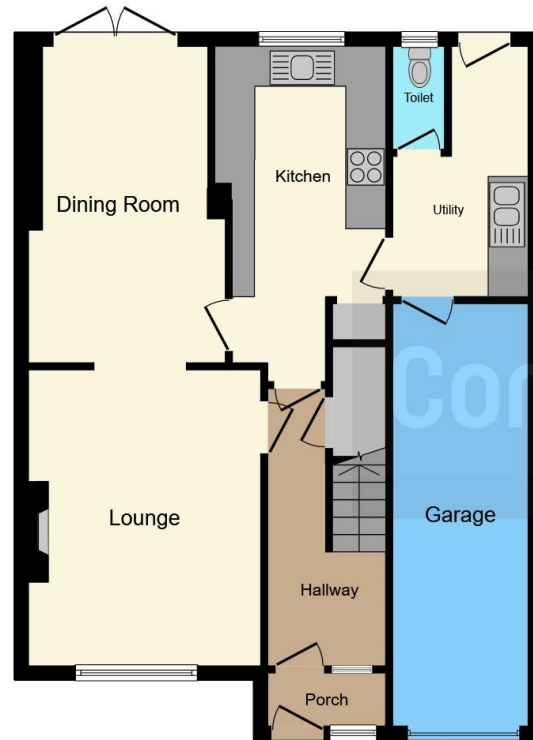
6' 11" x 5' 1" (2.11m x 1.55m)

Having a corner bath with shower over, wash hand basin, toilet and double-glazed window to the rear.









Ground Floor



First Floor

This floor plan is for illustrative purposes only. It is not drawn to scale. Any measurements, floor areas (including any total floor area), openings and orientation are approximate. No details are guaranteed, they cannot be relied upon for any purpose and they do not form part of any agreement. No liability is taken for any error, omission or misstatement. A party must rely upon its own inspection(s). Powered by www.focalagent.com

To view this property please contact Connells on

T 01455 230523
E hinckley@connells.co.uk

88 Castle Street
 HINCKLEY LE10 1DD

EPC Rating: Awaited

Tenure: Freehold

view this property online connells.co.uk/Property/HIN313097



1. MONEY LAUNDERING REGULATIONS Intending purchasers will be asked to produce identification documentation at a later stage and we would ask for your co-operation in order that there will be no delay in agreeing the sale. 2. These particulars do not constitute part or all of an offer or contract. 3. The measurements indicated are supplied for guidance only and as such must be considered incorrect. Potential buyers are advised to recheck measurements before committing to any expense. 4. We have not tested any apparatus, equipment, fixtures, fittings or services and it is in the buyers interest to check the working condition of any appliances.

Connells Residential is registered in England and Wales under company number 1489613, Registered Office is Cumbria House, 16-20 Hockliffe Street, Leighton Buzzard, Bedfordshire, LU7 1GN. VAT Registration Number is 500 2481 05.

See all our properties at www.connells.co.uk | www.rightmove.co.uk | www.zoopla.co.uk

Property Ref: HIN313097 - 0003