



Glenbarr Close Hinckley LE10 0UR

for sale offers in excess of
£230,000



Property Description

Situated in the desirable Hollycroft area of Hinckley, offers a peaceful and well-connected residential setting, ideal for families, professionals, and retirees. This quiet cul-de-sac location provides a great balance of suburban tranquility and easy access to essential amenities.

Hinckley town centre is just a short drive away, offering a variety of shops, supermarkets, cafes, and restaurants. The Crescent Shopping Centre provides a range of high-street retailers, dining options, and a cinema for leisure and entertainment. Everyday essentials are also within easy reach, with convenience stores and local services nearby.

The area benefits from excellent transport links, with the A5, M69, and M1 easily accessible for commuting to Leicester, Coventry, and Birmingham. Hinckley railway station offers regular train services to major cities, making it a convenient choice for commuters.

For outdoor enthusiasts, Hollycroft Park is just a short walk away, providing green spaces, walking trails, and recreational facilities. Families will also appreciate the selection of well-regarded schools and nurseries in the area, making it a great location for those with children.

Ground Floor

Lounge

15' 8" x 12' 9" (4.78m x 3.89m)

Good-sized room with radiator and patio door to the rear garden.

Dining Room

7' 7" x 15' 4" (2.31m x 4.67m)

Dining area having a radiator and window to the front.

Kitchen

7' 4" x 10' 7" (2.24m x 3.23m)

Fully fitted kitchen with a range of wall and base units, sink unit with window over, integrated oven and hob with extractor fan over and plumbing for washing machine.

First Floor

Bedroom 1

8' 8" x 14' 4" (2.64m x 4.37m)

With carpet floor and window to the rear.

Bedroom 2

10' 2" x 10' 8" (3.10m x 3.25m)

With carpet floor, fitted wardrobe and window to the front.

Bedroom 3

10' x 6' 5" (3.05m x 1.96m)

With carpet floor and window to the rear.

Bathroom

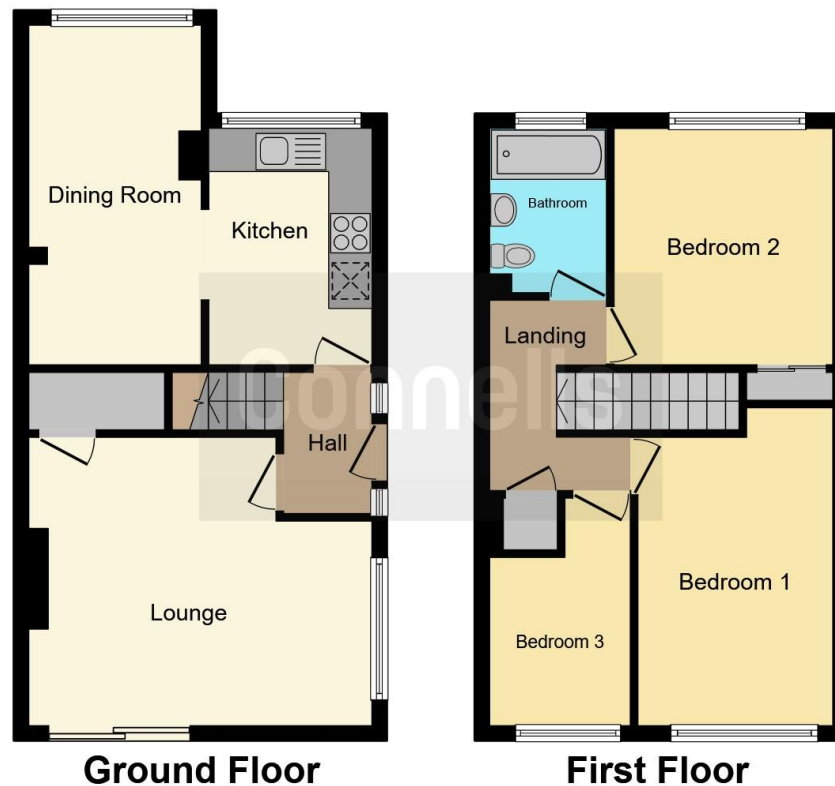
7' 4" x 5' 5" (2.24m x 1.65m)

Having a P shaped bath with shower over, wash hand basin and toilet.









This floor plan is for illustrative purposes only. It is not drawn to scale. Any measurements, floor areas (including any total floor area), openings and orientation are approximate. No details are guaranteed, they cannot be relied upon for any purpose and they do not form part of any agreement. No liability is taken for any error, omission or misstatement. A party must rely upon its own inspection(s). Powered by www.focalagent.com

To view this property please contact Connells on

T 01455 230523
E hinckley@connells.co.uk

88 Castle Street
 HINCKLEY LE10 1DD

EPC Rating: D

Tenure: Freehold

view this property online connells.co.uk/Property/HIN312498



1. MONEY LAUNDERING REGULATIONS Intending purchasers will be asked to produce identification documentation at a later stage and we would ask for your co-operation in order that there will be no delay in agreeing the sale. 2. These particulars do not constitute part or all of an offer or contract. 3. The measurements indicated are supplied for guidance only and as such must be considered incorrect. Potential buyers are advised to recheck measurements before committing to any expense. 4. We have not tested any apparatus, equipment, fixtures, fittings or services and it is in the buyers interest to check the working condition of any appliances.

Connells Residential is registered in England and Wales under company number 1489613, Registered Office is Cumbria House, 16-20 Hockliffe Street, Leighton Buzzard, Bedfordshire, LU7 1GN. VAT Registration Number is 500 2481 05.

See all our properties at www.connells.co.uk | www.rightmove.co.uk | www.zoopla.co.uk

Property Ref: HIN312498 - 0002