



**Connells**

Preston Drive  
Newbold Verdon Leicester

# Preston Drive Newbold Verdon Leicester LE9 9PL

for sale  
**£350,000**



## Property Description

**\*\*STUNNING 3 BEDROOM SEMI-DETACHED HOUSE FOR SALE!\*\***

We are delighted to present this beautifully renovated 3 bedroom semi-detached house, perfectly blending modern style with traditional charm. Located in a desirable area, this stunning property boasts ample parking for multiple vehicles and is a must-see for anyone looking for a spacious and stylish home.

3 spacious bedrooms, perfect for families or professionals

Fully renovated to a high standard, with modern fixtures and fittings throughout

Bright and airy living room with large windows, perfect for entertaining

Stylish kitchen with high-gloss units, quartz worktops, and integrated appliances

Ample parking for multiple vehicles, ideal for families or those with multiple cars

Private rear garden, perfect for outdoor entertaining or relaxation

Convenient location, close to local amenities, schools, and transport links

Truly not one to be missed this property is presented to a exceptional standard throughout, with ample living space and spacious outside areas ideal for family's or those who love to entertain.

Don't miss out on the opportunity to own the

beautifully presented home, call now to book your viewing.

## Entrance Hall

14' 10" x 8' 9" ( 4.52m x 2.67m )

Tiled flooring, glass paneled door leading to lounge, double glass paneled doors leading to kitchen area.

## Cloakroom

Double glazed window, W.C

## Kitchen/Diner/Living Room

23' x 20' 9" ( 7.01m x 6.32m )

With a range of wall and base units, Island with seating, double integrated oven, induction hob with extractor, recess for fridge/freezer, spot lights, tiled flooring, bi-fold doors leading to spacious enclosed rear garden.

## Lounge

13' 2" x 13' ( 4.01m x 3.96m )

carpet flooring, feature fire place, slim line half height radiator, media wall with recess for TV.

## Bedroom 1

13' x 11' 10" ( 3.96m x 3.61m )

Double glazed window to front elevation, fitted wardrobes with sliding mirrored doors, radiator, laminate flooring

## Bedroom 2

13' 4" x 8' 7" ( 4.06m x 2.62m )

double glazed window to rear elevation,  
Laminate flooring

### Bedroom 3

10' x 6' 3" ( 3.05m x 1.91m )

Double glazed window to front elevation,  
laminate flooring.

### Shower Room

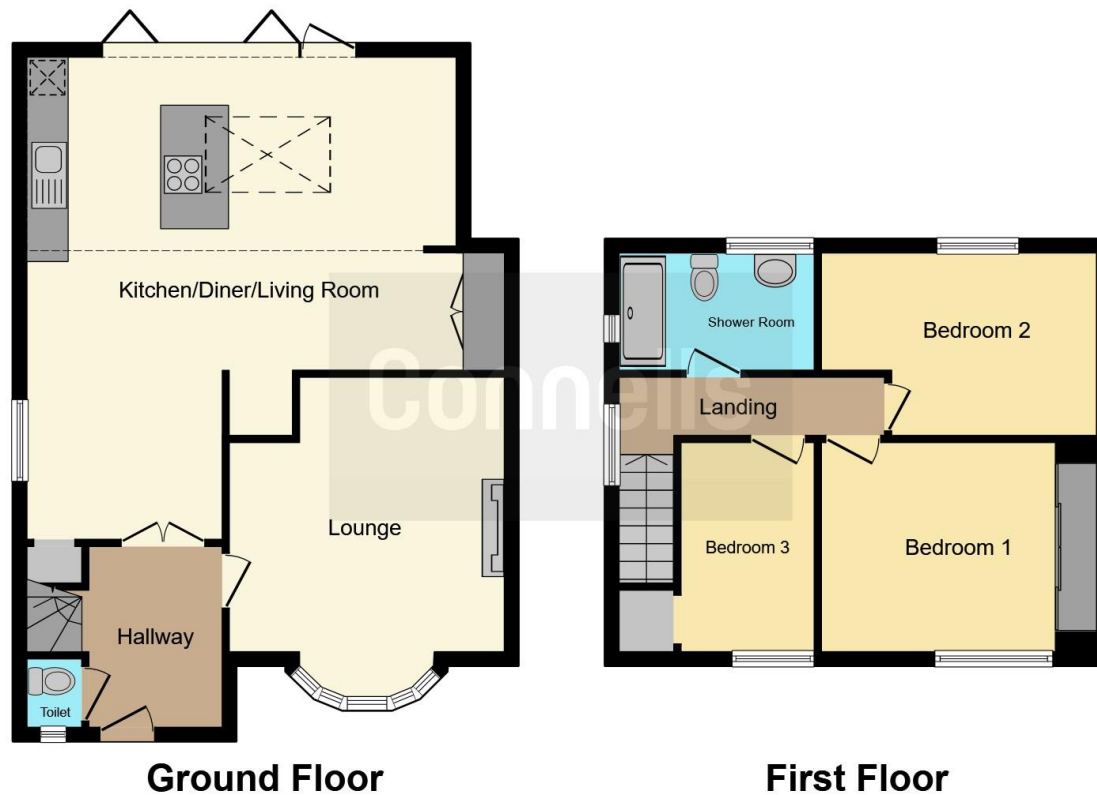
9' 3" x 5' 6" ( 2.82m x 1.68m )

Double glazed privacy window, W.C, wash  
hand basin with vanity unit, walk-in shower  
cubicle.









This floor plan is for illustrative purposes only. It is not drawn to scale. Any measurements, floor areas (including any total floor area), openings and orientation are approximate. No details are guaranteed, they cannot be relied upon for any purpose and they do not form part of any agreement. No liability is taken for any error, omission or misstatement. A party must rely upon its own inspection(s). Powered by [www.focalagent.com](http://www.focalagent.com)

To view this property please contact Connells on

**T 0145 523 0523**  
**E [hinckley@connells.co.uk](mailto:hinckley@connells.co.uk)**

22-24 Halford Street  
 LEICESTER LE1 1JB

**EPC Rating: D**

Tenure: Freehold

**view this property online [connells.co.uk/Property/HIN312905](http://connells.co.uk/Property/HIN312905)**



1. MONEY LAUNDERING REGULATIONS Intending purchasers will be asked to produce identification documentation at a later stage and we would ask for your co-operation in order that there will be no delay in agreeing the sale. 2. These particulars do not constitute part or all of an offer or contract. 3. The measurements indicated are supplied for guidance only and as such must be considered incorrect. Potential buyers are advised to recheck measurements before committing to any expense. 4. We have not tested any apparatus, equipment, fixtures, fittings or services and it is in the buyers interest to check the working condition of any appliances.

Connells Residential is registered in England and Wales under company number 1489613, Registered Office is Cumbria House, 16-20 Hockliffe Street, Leighton Buzzard, Bedfordshire, LU7 1GN. VAT Registration Number is 500 2481 05.

**See all our properties at [www.connells.co.uk](http://www.connells.co.uk) | [www.rightmove.co.uk](http://www.rightmove.co.uk) | [www.zoopla.co.uk](http://www.zoopla.co.uk)**

Property Ref: HIN312905 - 0006