

for sale

£210,000



Westaway Cottage Taunton Road Bishops Lydeard Taunton TA4 3BN

Westaway Cottage is an attractive mews style CHARACTER HOME enjoying an impressive 'tucked away' position in the centre of the popular village of Bishops Lydeard. This HIGHLY CHARISMATIC HOME is available with NO ONWARD CHAIN.



Westaway Cottage Taunton Road Bishops Lydeard Taunton TA4 3BN

Front Door

Leading to...

Living Room

15' 10" max x 10' 3" max (4.83m max x 3.12m max)
Double glazed window to front and single glazed window to rear.
Radiator. Stairs rise to the first floor. Doorways provide access
through to the kitchen and the...

Dinning Room/Study

9' 7" max x 7' 3" average plus recess (2.92m max x 2.21m
average plus recess)
Double glazed window to front. Radiator. Wall mounted
combination boiler.

Kitchen

10' Average x 9' 8" max (3.05m Average x 2.95m max)
Double glazed window to front and single glazed window to rear.
Radiator. The kitchen itself is equipped with a range of modern
style wall and base mounted units with roll top work surfaces
including a sink and drainer with mixer tap. Integrated electric
oven with digital hob and cookerhood over. Recesses include
plumbing for an automatic washing machine.

First Floor Landing

Master Bedroom

10' 8" max x 10' 9" (3.25m max x 3.28m)
Double glazed window to front. Radiator.

Bedroom Two



10' 8" average x 9' 11" average (3.25m average x 3.02m average)

Double glazed window to front with single glazed window to rear.
Radiator. Attic hatch.

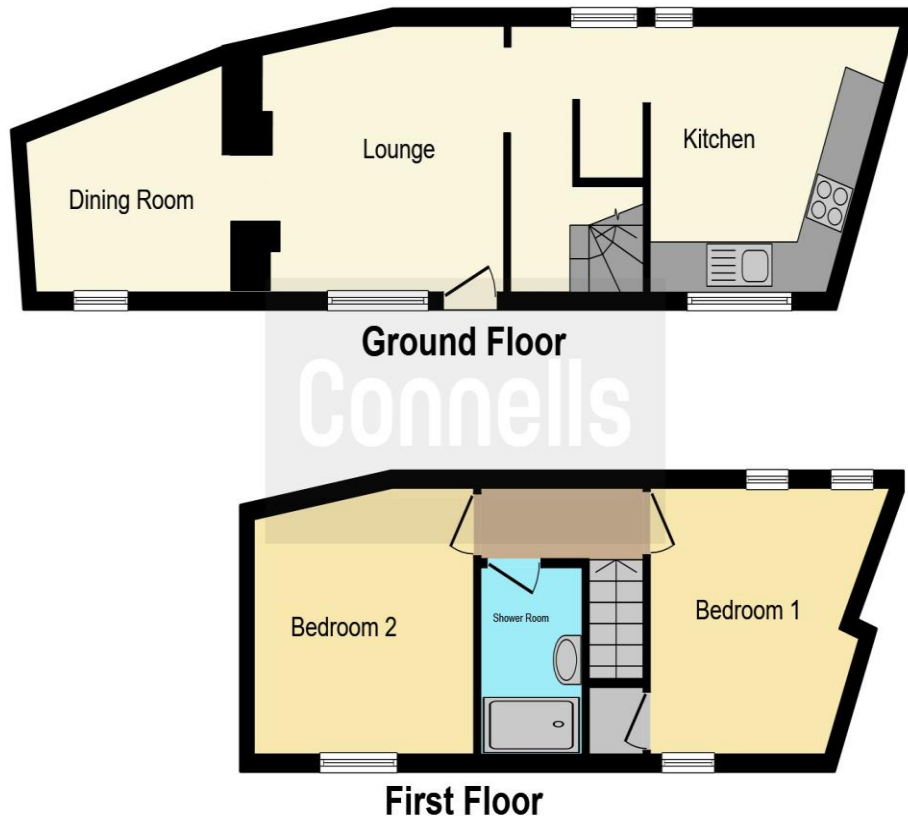
Shower Room

Obscure double glazed window to front. Heated towel rail. The modern style suite itself comprises low level WC, wash hand basin with mixer tap. Vanity cupboard. Shower cubicle with integral shower. Part tiling.

Parking

Designated parking to the front of the property for one car.





This floor plan is for illustrative purposes only. It is not drawn to scale. Any measurements, floor areas (including any total floor area), openings and orientation are approximate. No details are guaranteed, they cannot be relied upon for any purpose and they do not form part of any agreement. No liability is taken for any error, omission or misstatement. A party must rely upon its own inspection(s). Powered by www.focalagent.com

directions to this property:

From Taunton proceed in a northerly direction towards Minehead on the A358 proceeding past Norton Manor Camp and straight over the Cotford roundabout filtering off straight away signposted to Bishops Lydeard. Continue on this road and into the village itself turning left opposite the post office underneath an archway, where Westaway Cottage will be seen straight away on the right hand side.

To view this property please contact Connells on

T 01823 334 433
E taunton@connells.co.uk

53 High Street
 TAUNTON TA1 3PR

Property Ref: TTN312069 - 0009

Tenure: Freehold

EPC Rating: D

view this property online connells.co.uk/Property/TTN312069



1. MONEY LAUNDERING REGULATIONS Intending purchasers will be asked to produce identification documentation at a later stage and we would ask for your co-operation in order that there will be no delay in agreeing the sale. 2. These particulars do not constitute part or all of an offer or contract. 3. The measurements indicated are supplied for guidance only and as such must be considered incorrect. Potential buyers are advised to recheck measurements before committing to any expense. 4. We have not tested any apparatus, equipment, fixtures, fittings or services and it is in the buyers interest to check the working condition of any appliances.

Connells Residential is registered in England and Wales under company number 1489613, Registered Office is Cumbria House, 16-20 Hockliffe Street, Leighton Buzzard, Bedfordshire, LU7 1GN. VAT Registration Number is 500 2481 05.

see all our properties at www.connells.co.uk | www.rightmove.co.uk | www.zoopla.co.uk