

for sale

£170,000



Darwin Close Taunton TA2 6TX

A rare treat for **FIRST-TIME BUYERS** and **BUY-TO-LET LANDLORDS** alike! This superb back-to-back semi-detached home is beautifully appointed throughout. Advantages include gas central heating, double glazing and a recently installed kitchen and bathroom. **VIEWING ADVISED!**



Darwin Close Taunton TA2 6TX

Front Door

Leading to...

Vestibule

through to the...

Living Area

12' 10" x 12' 5" (3.91m x 3.78m)

Radiator. Storage Area. Open plan doorway to the...

Kitchen Area

6' 6" x 6' 4" (1.98m x 1.93m)

Comprising a range of high quality wall and base-mounted units with an 'L' shape work surface, an integrated electric oven and

hob with extractor hood over, sink and drainer with mixer tap. Integrated fridge/freezer, recess and plumbing for an automatic washing machine

Shower Room

A modern style suite comprising low level W.C, wash hand basin with vanity cupboard. Shower cubicle. Partial tiling.

Storage Area

Accessed via the lounge, there is a useful storage area. Doorway supplies access into to the garden

Bedroom One

12' 3" x 10' (3.73m x 3.05m)



A wonderful galleried bedroom with feature double glazed triangular window to side. Built-in wardrobe. Radiator.

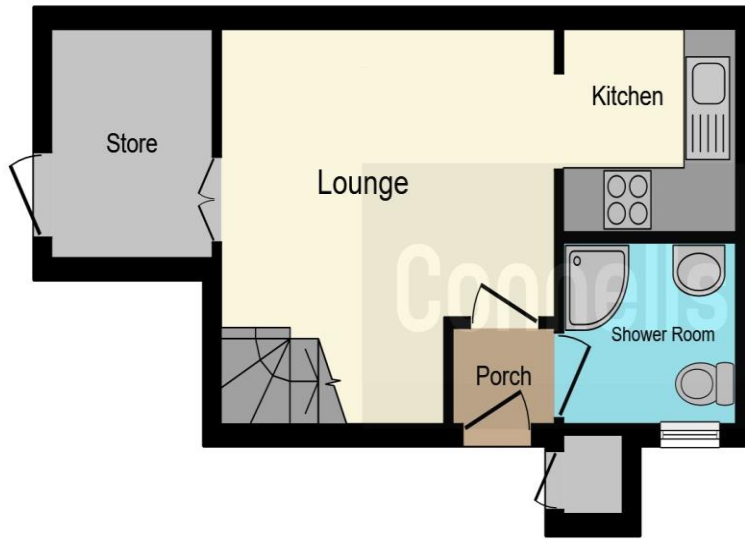
Garden

An attractive and enclosed level garden laid to a combination of patio and easy maintenance stone chippings. Well stocked with a variety of shrubs and flowers.

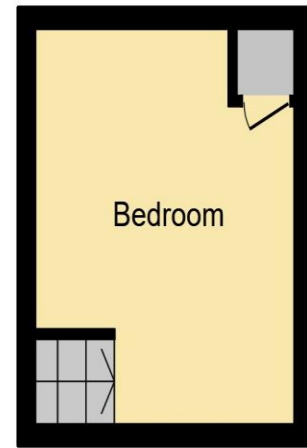
Parking

Adjacent to the property, there is a large off road communal parking area.





Ground Floor



First Floor

This floorplan is for illustrative purposes only and is not drawn to scale. Measurements, floor-areas, openings and orientations are approximate. They should not be relied upon for any purpose and do not form any part of an agreement. No liability is taken for any error or mis-statement. All parties must rely on their own inspections.

directions to this property:

From Taunton Town Centre head north on Bridge Street and at the fork bear left onto Staplegrove Road, passing The Kings Arms on your right hand side. Follow the road around to the right and take the second exit at the roundabout to continue along Staplegrove Road. Turn left onto Bindon Road and continue for roughly half a mile. Turn right onto Hudson Way and then immediately left onto Darwin Close. The property can be accessed via a footpath on the left hand side.

To view this property please contact Connells on

T 01823 334 433
E taunton@connells.co.uk

53 High Street
 TAUNTON TA1 3PR

Property Ref: TTN311575 - 0008

Tenure: Freehold

EPC Rating: E

check out more properties at connells.co.uk



1. MONEY LAUNDERING REGULATIONS Intending purchasers will be asked to produce identification documentation at a later stage and we would ask for your co-operation in order that there will be no delay in agreeing the sale. 2. These particulars do not constitute part or all of an offer or contract. 3. The measurements indicated are supplied for guidance only and as such must be considered incorrect. Potential buyers are advised to recheck measurements before committing to any expense. 4. We have not tested any apparatus, equipment, fixtures, fittings or services and it is in the buyers interest to check the working condition of any appliances.

Connells Residential is registered in England and Wales under company number 1489613, Registered Office is Cumbria House, 16-20 Hockliffe Street, Leighton Buzzard, Bedfordshire, LU7 1GN. VAT Registration Number is 500 2481 05.

see all our properties at www.connells.co.uk | www.rightmove.co.uk | www.zoopla.co.uk