

for sale

offers in excess of **£200,000**



## Haydon Road Taunton TA1 1SY

**NO ONWARD CHAIN!** This spacious **THREE BEDROOMED** Victorian style home is conveniently located within walking distance of **TOWN CENTRE** amenities and features a large **OPEN PLAN** Lounge / Diner. A great opportunity for a **BUY TO LET** or first purchase. **VIEW NOW!**



# Haydon Road Taunton TA1 1SY

## Front Door

Leading into...

## Entrance Hall

A small entrance hall with stairs leading to the first floor. Door through to the...

## Lounge / Diner

23' 2" x 13' 4" ( 7.06m x 4.06m )

A very generous open plan room with three wall-mounted radiators and windows to front and side aspects. Understairs cupboard. Door to the Kitchen.

## Kitchen

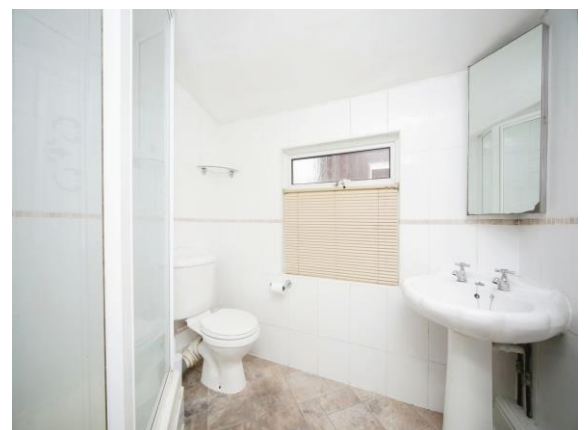
9' 10" x 6' 9" ( 3.00m x 2.06m )

A modern kitchen with a range of wall and base-mounted units. Work surfaces incorporating a sink with drainer. Freestanding gas cooker with fitted cooker hood over. Recess for an automatic washing machine / dishwasher. Tiled splashbacks and window to side aspect. Open to the Utility Room and door through to the...

## Shower Room

Suite comprising a corner shower with wall-mounted shower over, low level W.C. and pedestal wash hand basin. Additional features include a heated towel rail, majority tiling and a window to rear aspect.

## Utility Room



Window to rear aspect. Single door leading out to the rear garden.

## First Floor Landing

Boiler housed within a large storage cupboard. Doors to all three bedrooms.

### Bedroom 1

13' 5" x 11' 4" ( 4.09m x 3.45m )

A good size double bedroom with wall-mounted radiator and windows to the rear and side aspects.

### Bedroom 2

11' 5" x 7' 7" ( 3.48m x 2.31m )

Loft hatch, wall-mounted radiator and window to rear aspect.

### Bedroom 3

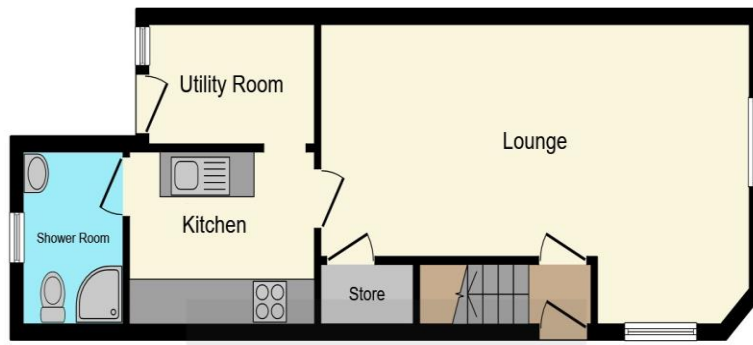
9' 9" x 7' ( 2.97m x 2.13m )

Wall-mounted radiator and window to rear.

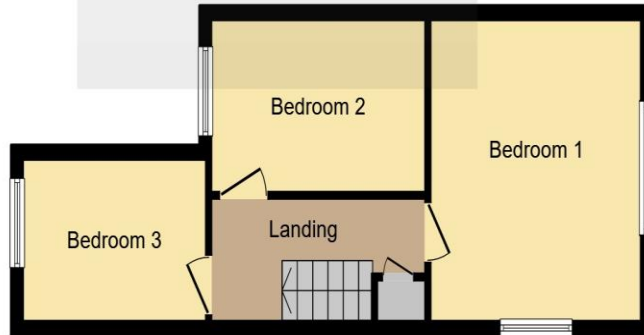
## Rear Garden

A low maintenance courtyard garden with rear access via a single gate.





**Ground Floor**



**First Floor**

This floorplan is for illustrative purposes only and is not drawn to scale. Measurements, floor-areas, openings and orientations are approximate. They should not be relied upon for any purpose and do not form any part of an agreement. No liability is taken for any error or mis-statement. All parties must rely on their own inspections.

**directions to this property:**

From Taunton town centre head along East Reach turning left into Eastbourne Road. Follow the one way system onto Haydon Road where the property will be identified on the right hand side.

To view this property please contact Connells on

**T 01823 334 433**  
**E taunton@connells.co.uk**

53 High Street  
 TAUNTON TA1 3PR

Property Ref: TTN311761 - 0004

**Tenure:** Freehold

**EPC Rating:** D

**view this property online [connells.co.uk/Property/TTN311761](http://connells.co.uk/Property/TTN311761)**



1. MONEY LAUNDERING REGULATIONS Intending purchasers will be asked to produce identification documentation at a later stage and we would ask for your co-operation in order that there will be no delay in agreeing the sale. 2. These particulars do not constitute part or all of an offer or contract. 3. The measurements indicated are supplied for guidance only and as such must be considered incorrect. Potential buyers are advised to recheck measurements before committing to any expense. 4. We have not tested any apparatus, equipment, fixtures, fittings or services and it is in the buyers interest to check the working condition of any appliances.

Connells Residential is registered in England and Wales under company number 1489613, Registered Office is Cumbria House, 16-20 Hockliffe Street, Leighton Buzzard, Bedfordshire, LU7 1GN. VAT Registration Number is 500 2481 05.