

for sale

£400,000



## Buttercross Meadows Cartway Lane Somerton TA11 6JH

FANTASTIC FOUR BEDROOM DETACHED HOME LOCATED ON THE BUTTERCROSS MEADOW DEVELOPMENT! This brand new property is the perfect family home and benefits from a downstairs wc, kitchen/diner, living room, en suite to the main bedroom and garage with driveway! CALL NOW.

# Buttercross Meadows Cartway Lane Somerton TA11 6JH

## Entrance Hall

Composite door to the front, radiator and under stairs cupboard.

## Cloakroom

Double glazed window to the rear, wash hand basin, wc, radiator and part tiling.

## Lounge

22' 3" x 11' 1" (6.78m x 3.38m)

Double glazed windows to the front and rear, 2 x radiators and French doors to the side.



### **Kitchen/ Diner**

22' 4" Max x 9' 11" + Recess (6.81m Max x 3.02m + Recess)

Fitted kitchen with a range of wall and base units, radiator, electric double oven, gas hob, space for a washing machine, integrated fridge/freezer and dishwasher, double glazed windows to the front and side, door to the side, 2 x radiators and the boiler.

### **Landing**

Loft access.

### **Bedroom 1**

13' 2" x 11' 1" (4.01m x 3.38m)

Double glazed window to the front and a radiator.

### **En Suite**

Shower, wc, wash hand basin, double glazed window to the front, heated towel rail, extractor fan and part tiling.

### **Bedroom 2**

13' 3" x 10' 2" (4.04m x 3.10m)

Double glazed window to the front, radiator and an airing cupboard.

### **Bedroom 3**

11' 2" x 8' 9" (3.40m x 2.67m)

Double glazed window to the side and a radiator.

### **Bedroom 4**

8' 9" into Recess x 8' 9" Max (2.67m into Recess x 2.67m Max)

Double glazed window to the rear and a radiator.

### **Bathroom**

Double glazed window to the rear, bath, heated towel rail, wc, wash hand basin, extractor fan and part tiling.

## Outside

### Front Garden

Driveway to the side, lawn and plants.

### Rear Garden

Fenced & walled rear garden with a lawn and patio.

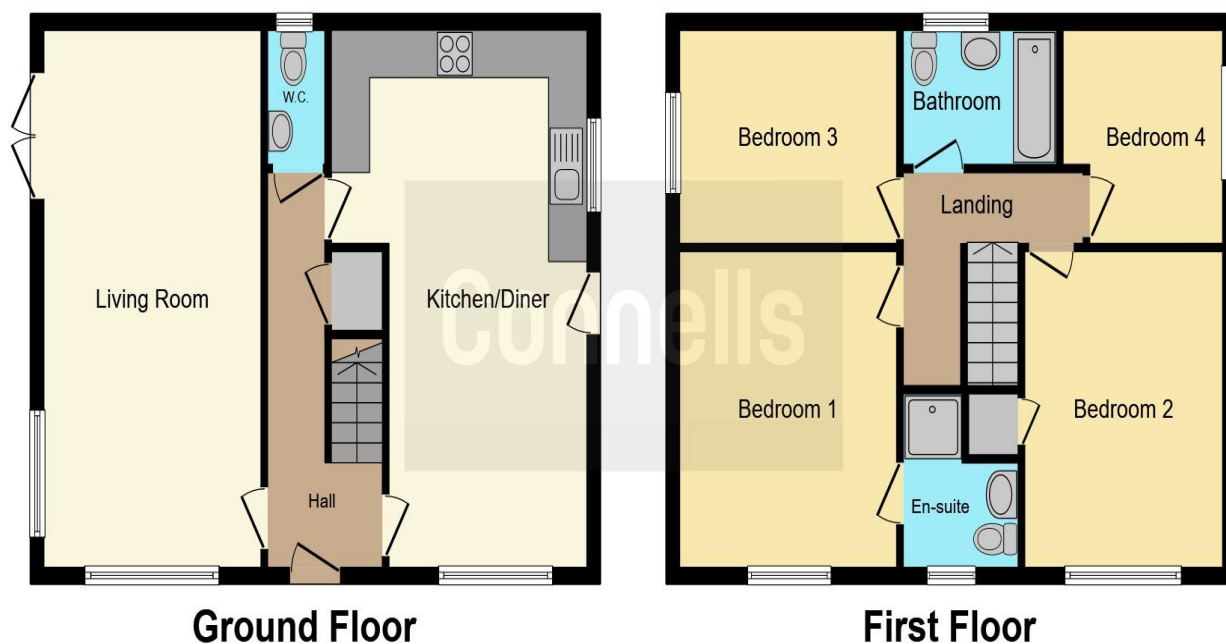
### Garage

To the side with up & over door.









This floor plan is for illustrative purposes only. It is not drawn to scale. Any measurements, floor areas (including any total floor area), openings and orientation are approximate. No details are guaranteed, they cannot be relied upon for any purpose and they do not form part of any agreement. No liability is taken for any error, omission or misstatement. A party must rely upon its own inspection(s). Powered by [www.focalagent.com](http://www.focalagent.com)

To view this property please contact Connells on

**T 01935 431 129**  
**E [yeovil@connells.co.uk](mailto:yeovil@connells.co.uk)**

1-3 Princes Street  
 YEOVIL BA20 1EW

Property Ref: YOV313177 - 0002

**Tenure:** Freehold

**EPC Rating:** Exempt

**view this property online** [connells.co.uk/Property/YOV313177](http://connells.co.uk/Property/YOV313177)

1. MONEY LAUNDERING REGULATIONS Intending purchasers will be asked to produce identification documentation at a later stage and we would ask for your co-operation in order that there will be no delay in agreeing the sale. 2. These particulars do not constitute part or all of an offer or contract. 3. The measurements indicated are supplied for guidance only and as such must be considered incorrect. Potential buyers are advised to recheck measurements before committing to any expense. 4. We have not tested any apparatus, equipment, fixtures, fittings or services and it is in the buyers interest to check the working condition of any appliances.

Connells Residential is registered in England and Wales under company number 1489613, Registered Office is Cumbria House, 16-20 Hockliffe Street, Leighton Buzzard, Bedfordshire, LU7 1GN. VAT Registration Number is 500 2481 05.

see all our properties at [www.connells.co.uk](http://www.connells.co.uk) | [www.rightmove.co.uk](http://www.rightmove.co.uk) | [www.zoopla.co.uk](http://www.zoopla.co.uk)