



Connells

Mill Street
Melton Mowbray

Mill Street Melton Mowbray LE13 1AY

for sale offers in the region of
£190,000



Property Description

Located just a short walk from Melton Mowbray's town centre and train station, Mill Street is a charming three-bedroom bay-fronted terraced home, offering spacious accommodation and excellent opportunity for first time buyers or investors alike. Built between the 1930's and 1940's, the property features a traditional layout with generous room sizes and character features throughout.

The ground floor includes a welcoming entrance hall, a front-facing lounge with a walk-in bay window, rear dining room and a separate kitchen with fitted units, pantry storage, and access to the rear garden. Upstairs, there are three bedrooms—two doubles and one single—alongside a family bathroom with a three-piece suite. Outside, the home benefits from a front garden, a generous rear garden with patio and a well maintained lawn, offering scope for landscaping or further development. With its central location and solid structure, this property is ideal for buyers looking to create a comfortable family home. The property comes freshly carpeted and decorated throughout.

Living Room

10' 5" plus bay x 11' 11" max (3.17m plus bay x 3.63m max)

Front-facing double glazed window with walk-in bay window and radiator.

Dining Room

10' 1" x 11' 9" max (3.07m x 3.58m max)

Rear-facing double glazed windows, radiator with space for a family table.

Kitchen

12' 8" max x 6' 8" max (3.86m max x 2.03m max)

It includes fitted cabinetry, a freestanding cooker point, stainless steel sink, pantry storage, and access to the rear garden.

Bedroom 1

11' 8" max x 10' 1" max (3.56m max x 3.07m max)

Front double with bay window and radiator.

Bedroom 2

14' 5" max x 10' 6" max (4.39m max x 3.20m max)

Rear double with double glazed window, radiator and garden views.

Bedroom 3

7' 1" x 9' 4" (2.16m x 2.84m)

Single room, with double glazed front facing window and radiator, ideal for a study or nursery.

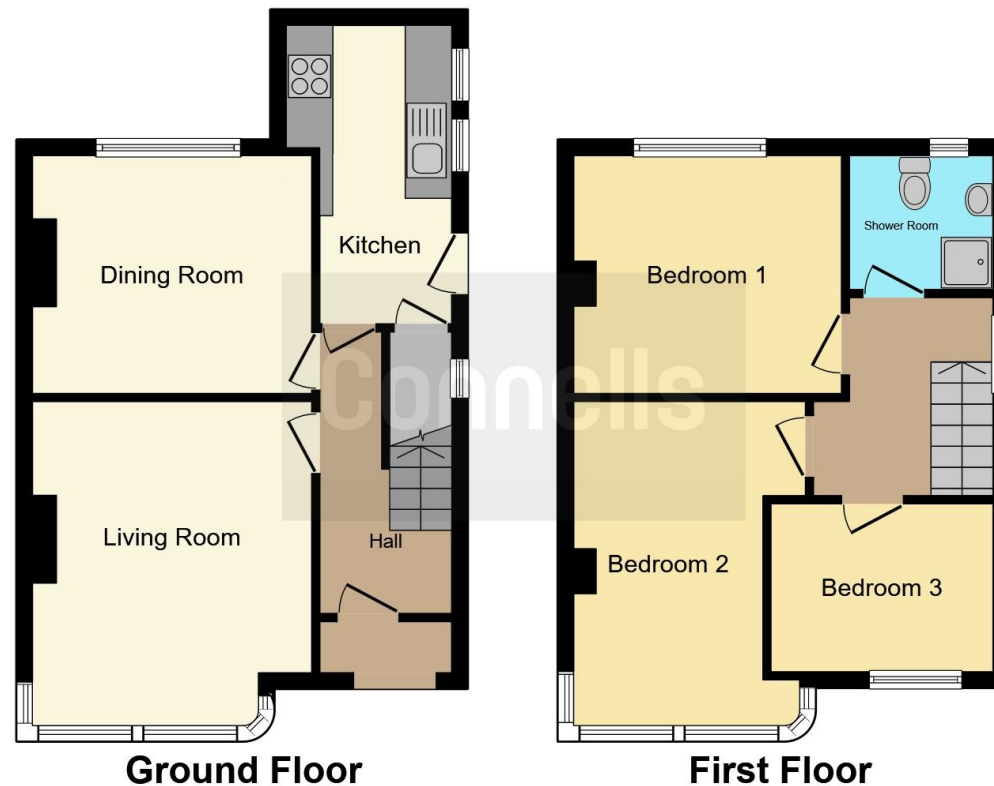
Bathroom

Neatly designed with a three-piece suite including a shower cubicle, WC, and pedestal sink. Finished with tiled splashbacks for practical charm.









This floor plan is for illustrative purposes only. It is not drawn to scale. Any measurements, floor areas (including any total floor area), openings and orientation are approximate. No details are guaranteed, they cannot be relied upon for any purpose and they do not form part of any agreement. No liability is taken for any error, omission or misstatement. A party must rely upon its own inspection(s). Powered by www.focalagent.com

To view this property please contact Connells on

T 01664 560 241
E meltonmowbray@connells.co.uk

10A High Street
 MELTON MOWBRAY LE13 0TR

EPC Rating: D Council Tax
 Band: B

Tenure: Freehold

view this property online connells.co.uk/Property/MOW307625



1. MONEY LAUNDERING REGULATIONS Intending purchasers will be asked to produce identification documentation at a later stage and we would ask for your co-operation in order that there will be no delay in agreeing the sale. 2. These particulars do not constitute part or all of an offer or contract. 3. The measurements indicated are supplied for guidance only and as such must be considered incorrect. Potential buyers are advised to recheck measurements before committing to any expense. 4. We have not tested any apparatus, equipment, fixtures, fittings or services and it is in the buyers interest to check the working condition of any appliances.

Connells Residential is registered in England and Wales under company number 1489613, Registered Office is Cumbria House, 16-20 Hockliffe Street, Leighton Buzzard, Bedfordshire, LU7 1GN. VAT Registration Number is 500 2481 05.

See all our properties at www.connells.co.uk | www.rightmove.co.uk | www.zoopla.co.uk

Property Ref: MOW307625 - 0005