



Connells

Harleston Close
Leicester



Property Description

Harleston Close, a spacious and beautifully presented 5-bedroom mid-terraced property that combines modern living with comfort.

Located in a well-connected area with access to city centre amenities, ideal for families and commuters. Nearby, you'll find well-rated schools like St. Joseph's Catholic Academy and Scraftoft Valley Primary.

For shopping and services, there are local shops within walking distance, as well as larger retail options a short drive away. The property is also close to places of worship and green spaces, offering a balanced urban environment.

Transport links include convenient bus routes and quick access to main roads like Scraftoft Lane.

Ground Floor

Upon entering, you'll find Bedroom 1, measuring 6'7" x 8'1", complete with its own en-suite for added convenience. The inviting hallway leads into a generous kitchen dining area (11'9" x 15'), perfect for family meals and entertaining.

First Floor

The first floor features Bedroom 2, a bright and airy space (10'3" x 14'11") that also benefits from an en-suite. The expansive living room (18'3" x 14'1") provides an excellent area for relaxation and gatherings.

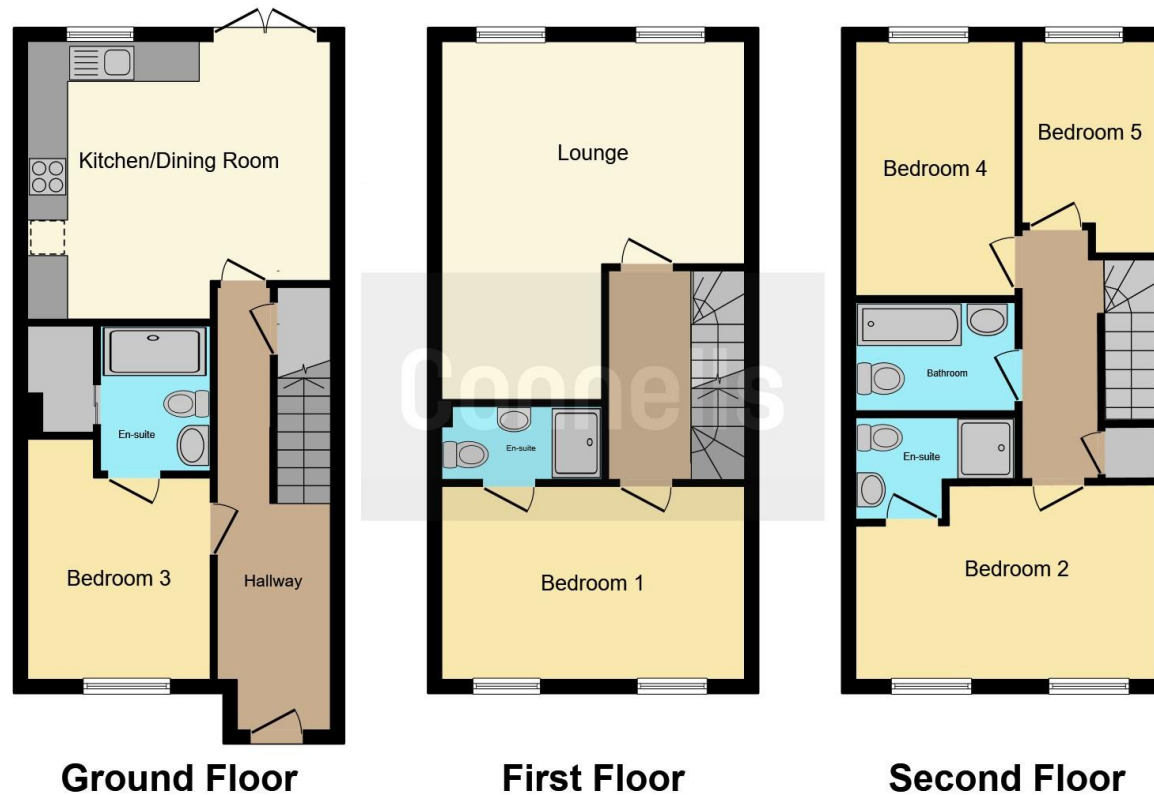
Second Floor

On the second floor, you'll discover Bedrooms 3, 4, and 5. Bedroom 3 (10'3" x 14'1") offers its own en-suite, while Bedroom 4 (13'5" x 8'1") and Bedroom 5 (9'11" x 6'5") provide versatile space for family, guests, or a home office. The second floor is completed by a family bathroom, ensuring ample facilities for everyone.









This floor plan is for illustrative purposes only. It is not drawn to scale. Any measurements, floor areas (including any total floor area), openings and orientation are approximate. No details are guaranteed, they cannot be relied upon for any purpose and they do not form part of any agreement. No liability is taken for any error, omission or misstatement. A party must rely upon its own inspection(s). Powered by www.focalagent.com

To view this property please contact Connells on

T 0116 262 0022
E leicester@connells.co.uk

22-24 Halford Street
 LEICESTER LE1 1JB

EPC Rating: B

Tenure: Freehold

view this property online connells.co.uk/Property/LTR323717



1. MONEY LAUNDERING REGULATIONS Intending purchasers will be asked to produce identification documentation at a later stage and we would ask for your co-operation in order that there will be no delay in agreeing the sale. 2. These particulars do not constitute part or all of an offer or contract. 3. The measurements indicated are supplied for guidance only and as such must be considered incorrect. Potential buyers are advised to recheck measurements before committing to any expense. 4. We have not tested any apparatus, equipment, fixtures, fittings or services and it is in the buyers interest to check the working condition of any appliances.

Connells Residential is registered in England and Wales under company number 1489613, Registered Office is Cumbria House, 16-20 Hockliffe Street, Leighton Buzzard, Bedfordshire, LU7 1GN. VAT Registration Number is 500 2481 05.

See all our properties at www.connells.co.uk | www.rightmove.co.uk | www.zoopla.co.uk

Property Ref: LTR323717 - 0002