



Connells

Blakesley Walk
Leicester



Property Description

This residential neighbourhood lies in the northern part of Leicester, which is known for being a diverse and vibrant area. Includes a mix of suburban housing, local amenities, and parks, making it a comfortable setting for families and individuals alike.

Blakesley Walk is part of a community-oriented area with nearby schools, shops, and public services. The neighbourhood offers access to green spaces and is well-connected to the city centre via public transport and major road networks. Residents can enjoy local conveniences while still being close to the bustling energy of central Leicester. The area is also known for its rich cultural diversity, which adds to its lively community feel.

Ground Floor

Porch

2' 8" x 4' 3" (0.81m x 1.30m)

Living Room

11' 3" x 18' 2" (3.43m x 5.54m)

With window to the front.

Kitchen

15' 1" x 11' 3" (4.60m x 3.43m)

Fitted with a range of wall and base units, sink unit with window over, oven and hob with an extractor fan over.

First Floor

Landing

9' 7" x 2' 8" (2.92m x 0.81m)

Bedroom 1

15' 2" x 11' 3" (4.62m x 3.43m)

With window to the front

Bedroom 2

8' 6" x 11' 4" (2.59m x 3.45m)

With window to the rear

Bathroom

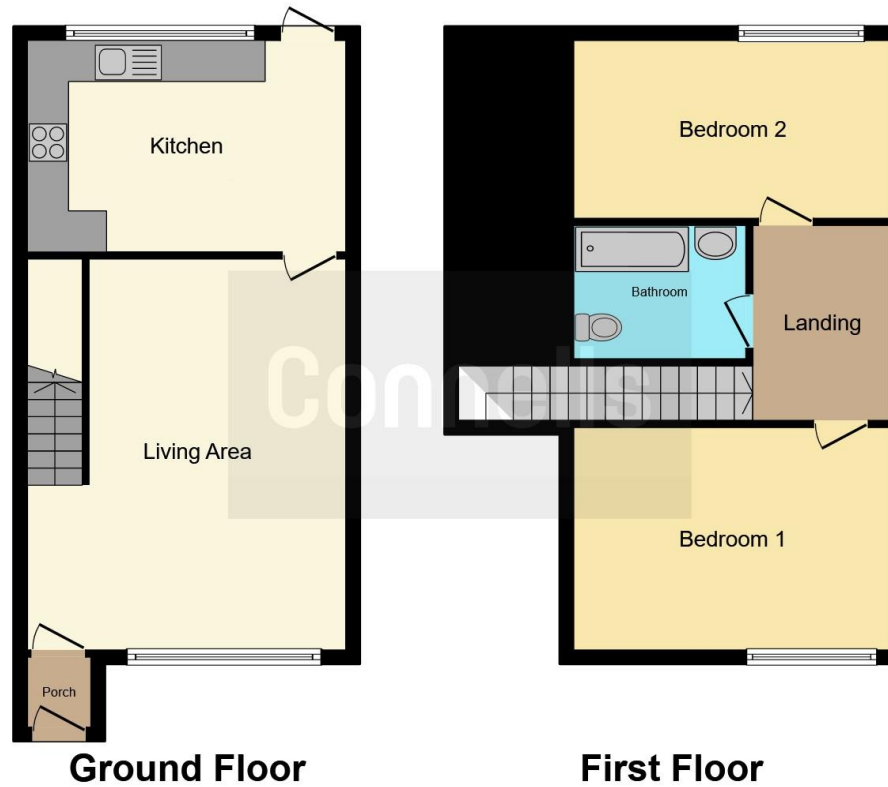
6' 4" x 8' 4" (1.93m x 2.54m)

With a bath, wash hand base units, towel radiator and toilet.









This floor plan is for illustrative purposes only. It is not drawn to scale. Any measurements, floor areas (including any total floor area), openings and orientation are approximate. No details are guaranteed, they cannot be relied upon for any purpose and they do not form part of any agreement. No liability is taken for any error, omission or misstatement. A party must rely upon its own inspection(s). Powered by www.focalagent.com

To view this property please contact Connells on

T 0116 262 0022
E leicester@connells.co.uk

22-24 Halford Street
 LEICESTER LE1 1JB

EPC Rating: D

view this property online connells.co.uk/Property/LTR323570

Tenure: Freehold



1. MONEY LAUNDERING REGULATIONS Intending purchasers will be asked to produce identification documentation at a later stage and we would ask for your co-operation in order that there will be no delay in agreeing the sale. 2. These particulars do not constitute part or all of an offer or contract. 3. The measurements indicated are supplied for guidance only and as such must be considered incorrect. Potential buyers are advised to recheck measurements before committing to any expense. 4. We have not tested any apparatus, equipment, fixtures, fittings or services and it is in the buyers interest to check the working condition of any appliances.

Connells Residential is registered in England and Wales under company number 1489613, Registered Office is Cumbria House, 16-20 Hockliffe Street, Leighton Buzzard, Bedfordshire, LU7 1GN. VAT Registration Number is 500 2481 05.

See all our properties at www.connells.co.uk | www.rightmove.co.uk | www.zoopla.co.uk

Property Ref: LTR323570 - 0003