



Connells

Hereward Drive
Thurnby Leicester



Property Description

Delightful property situated in a peaceful and sought-after residential area, offering a perfect blend of suburban tranquillity and easy access to city conveniences. Located in the charming village of Thurnby, this home is ideal for families, professionals, or anyone seeking a comfortable and well-connected place to live.

The property boasts an attractive and well-maintained exterior, with a welcoming entrance that immediately gives a sense of warmth and homeliness. Inside, the house is spacious and filled with natural light, creating a bright and airy atmosphere throughout.

Situated on Hereward Drive, this home benefits from being part of a friendly community with excellent local amenities, including schools, parks, and shops. The location also offers convenient transport links to Leicester city centre and the surrounding areas, making it easy to enjoy both the serenity of village life and the vibrancy of the city.

Charming and inviting home that offers a perfect balance of comfort, style, and convenience, making it an excellent choice for anyone looking to settle in the Thurnby area.

Hallway

With walk in storage and an access to all rooms

Lounge

12' 1" x 15' 8" (3.68m x 4.78m)

With carpet floor, radiators, and a patio door to the conservatory

Dining Room

11' 4" x 9' 4" (3.45m x 2.84m)

Dining area with a window to the rear

Kitchen

13' x 10' 9" (3.96m x 3.28m)

Fully fitted kitchen with plumbing for dishwasher and washing machine, sink unit with window over, access to the rear and patio door to the dining room

Conservatory

11' 9" x 9' 9" (3.58m x 2.97m)

With patio door to the rear garden

Utility Room

2' 8" x 2' 2" (0.81m x 0.66m)

With window to the rear

Bedroom 1

11' 9" x 10' 9" (3.58m x 3.28m)

With carpet floor and window to the front

Bedroom 2

10' 9" x 9' 8" (3.28m x 2.95m)

With carpet floor, fitted wardrobes and window to the front

Shower Room

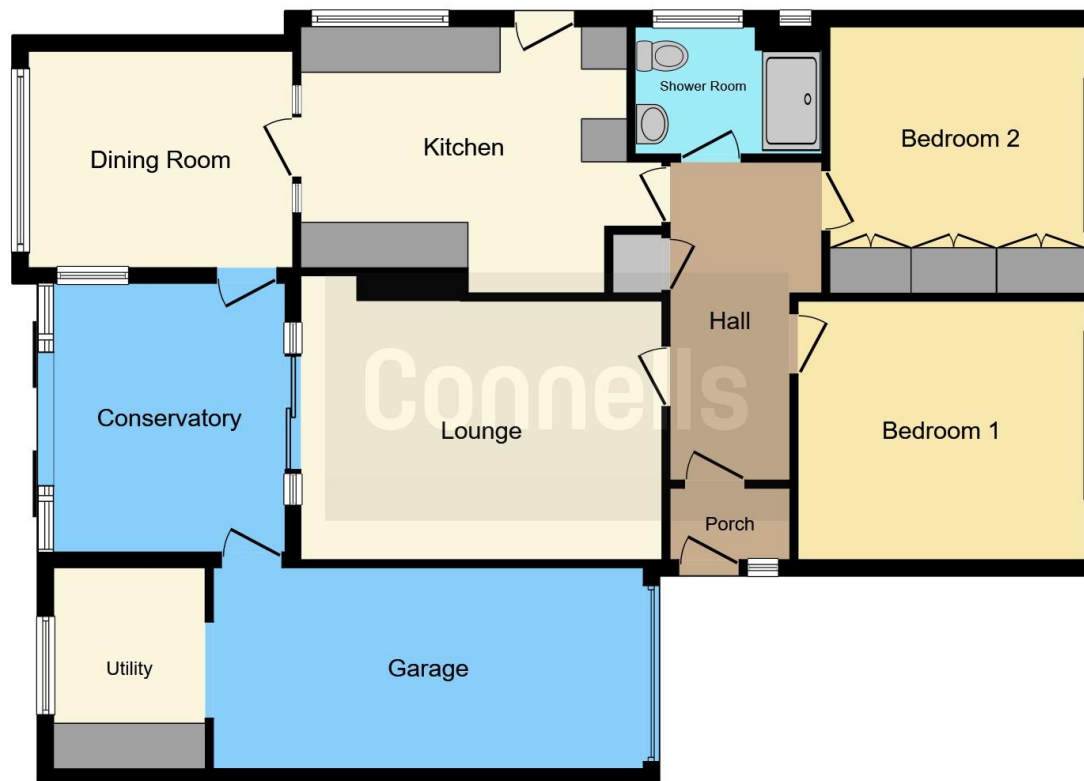
8' x 5' 5" (2.44m x 1.65m)

With walk in shower, wash hand basin, toilet
and towel radiator









This floor plan is for illustrative purposes only. It is not drawn to scale. Any measurements, floor areas (including any total floor area), openings and orientation are approximate. No details are guaranteed, they cannot be relied upon for any purpose and they do not form part of any agreement. No liability is taken for any error, omission or misstatement. A party must rely upon its own inspection(s). Powered by www.focalagent.com

To view this property please contact Connells on

T 0116 262 0022
E leicester@connells.co.uk

22-24 Halford Street
LEICESTER LE1 1JB

EPC Rating: D

view this property online connells.co.uk/Property/LTR323448

Tenure: Freehold



1. MONEY LAUNDERING REGULATIONS Intending purchasers will be asked to produce identification documentation at a later stage and we would ask for your co-operation in order that there will be no delay in agreeing the sale. 2. These particulars do not constitute part or all of an offer or contract. 3. The measurements indicated are supplied for guidance only and as such must be considered incorrect. Potential buyers are advised to recheck measurements before committing to any expense. 4. We have not tested any apparatus, equipment, fixtures, fittings or services and it is in the buyers interest to check the working condition of any appliances.

Connells Residential is registered in England and Wales under company number 1489613, Registered Office is Cumbria House, 16-20 Hockliffe Street, Leighton Buzzard, Bedfordshire, LU7 1GN. VAT Registration Number is 500 2481 05.

See all our properties at www.connells.co.uk | www.rightmove.co.uk | www.zoopla.co.uk

Property Ref: LTR323448 - 0004