



Not for marketing purposes INTERNAL USE ONLY

The Close
Anstey Leicester

The Close Anstey Leicester LE7 7EP

for sale offers over
£475,000



Property Description

Situated in the desirable LE7 area, this property benefits from a range of local amenities, including shops, schools, and recreational facilities. With excellent transport links. The village centre is situated within a ten-minute walk with amenities including co-op, public houses, boutiques, and restaurants. Two local primary schools and one secondary within the village of Anstey. Ratcliffe college is a 10 minute drive away and Loughborough Grammar is a 15 minute drive.

To the ground floor the property comprises of an entrance hall having a walk in storage cupboards and access to the spacious lounge, kitchen/diner, downstairs bathroom & bedroom.

Moving upstairs you'll find two further double bedrooms both having an en-suite 7 one with good-sized dressing room.

Driveway to the front & private garden to the rear.

Ground Floor

Hallway

6' 7" x 20' 5" (2.01m x 6.22m)

Lounge

21' 3" x 11' 2" (6.48m x 3.40m)

Having a radiator, window to the front & bi-fold doors to the garden

Kitchen/diner

19' 7" x 10' 4" (5.97m x 3.15m)

Fitted with a range of wall and base units, high specification fitted appliance, windows to the both sides of the property & access to the rear

Bedroom 3

11' 3" x 10' 5" (3.43m x 3.17m)

Having a radiator & window to the front

Bathroom

6' 1" x 6' 5" (1.85m x 1.96m)

Having a bath with shower over, wash hand basin & toilet

First Floor

Bedroom 1

21' 1" x 10' 7" (6.43m x 3.23m)

Having a laminate flooring, radiator & windows to the front and rear

En-Suite

4' x 9' 3" (1.22m x 2.82m)

Fitted with wash hand basin, cubical shower, toilet & towel radiator

Dressing Room

7' 4" x 10' (2.24m x 3.05m)

Having a carpet floor, radiator & roof window

Bedroom 2

11' 1" x 13' 2" (3.38m x 4.01m)

Having a radiator & window to the rear

En-Suite

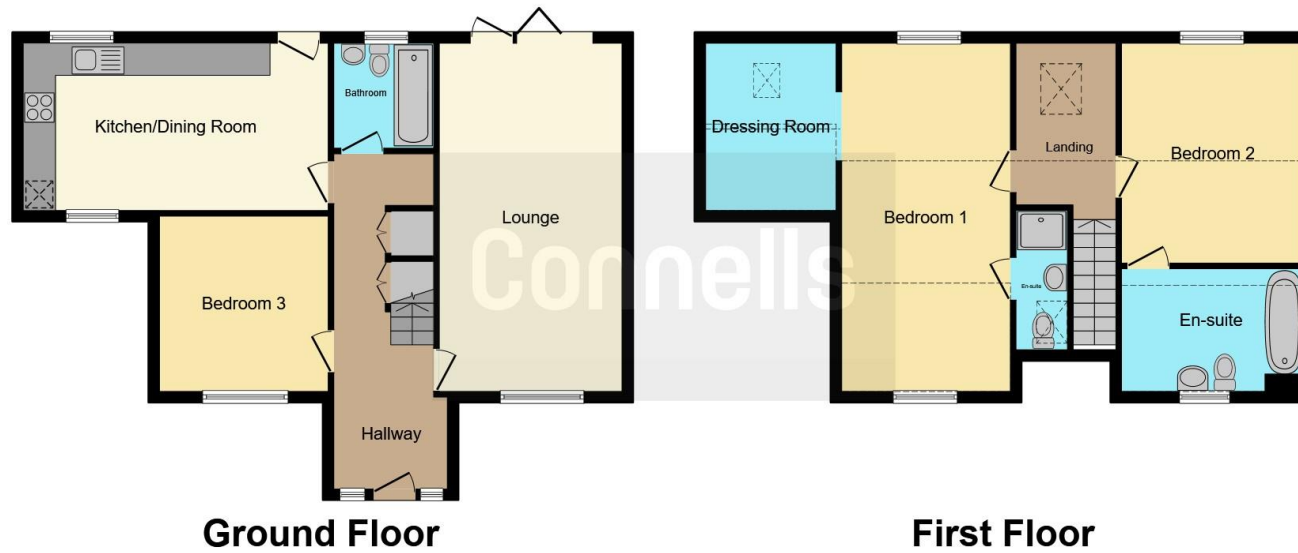
11' 4" x 7' 3" (3.45m x 2.21m)

Having a bath with shower over, wash hand basin & toilet









This floor plan is for illustrative purposes only. It is not drawn to scale. Any measurements, floor areas (including any total floor area), openings and orientation are approximate. No details are guaranteed, they cannot be relied upon for any purpose and they do not form part of any agreement. No liability is taken for any error, omission or misstatement. A party must rely upon its own inspection(s). Powered by www.focalagent.com

To view this property please contact Connells on

T 0116 262 0022
E leicester@connells.co.uk

22-24 Halford Street
 LEICESTER LE1 1JB

EPC Rating: B

Tenure: Freehold

[check out more properties at connells.co.uk](http://connells.co.uk)



1. MONEY LAUNDERING REGULATIONS Intending purchasers will be asked to produce identification documentation at a later stage and we would ask for your co-operation in order that there will be no delay in agreeing the sale. 2. These particulars do not constitute part or all of an offer or contract. 3. The measurements indicated are supplied for guidance only and as such must be considered incorrect. Potential buyers are advised to recheck measurements before committing to any expense. 4. We have not tested any apparatus, equipment, fixtures, fittings or services and it is in the buyers interest to check the working condition of any appliances.

Connells Residential is registered in England and Wales under company number 1489613, Registered Office is Cumbria House, 16-20 Hockliffe Street, Leighton Buzzard, Bedfordshire, LU7 1GN. VAT Registration Number is 500 2481 05.

See all our properties at www.connells.co.uk | www.rightmove.co.uk | www.zoopla.co.uk

Property Ref: LTR322678 - 0003