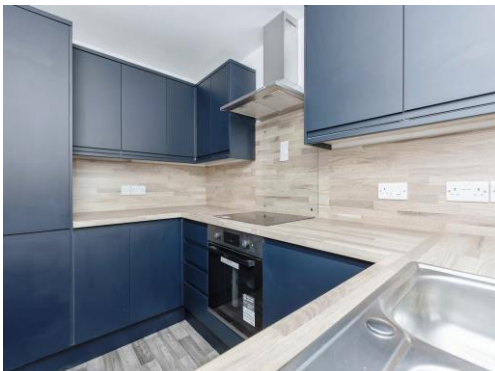




Connells

Willow Close
Thurmaston Leicester



Property Description

Willow Close is a modern new build development of 30 homes located in the popular residential area of Thurmaston in the heart of Leicester. Built by Appletree Homes the development offers a selection of two, three, and five bedroom homes. Each property benefits from off road parking, landscaped gardens, flooring throughout and integrated fitted kitchen.

Thurmaston is approximately four miles north of Leicester city centre and benefits from its proximity to the Thurmaston Shopping Centre with more than 18 stores, services and restaurants. It is also just a short drive from the city and the Fosse Park Retail Park with many high street stores.

There are many venues of entertainment in Leicester including cinemas and an array of museums, open park spaces and the National Space Centre.

These chain free new homes are build complete, ready and waiting to move into, call the team now to arrange your viewing appointment.

Location

Within easy access to the motorway and Leicester city centre Willow Close has all the amenities on your doorstep, from shopping centres, salons and pubs farm shop, pharmacy, GPs and an excellent selection of schools .

Whether you're a couple, family or looking to downsize, Willow Close makes a fantastic location for your new home.

New Build Efficiency

These homes are built to a high standard of energy efficiency, which means your monthly bills will be significantly less than running an older property. In fact, 84% of new build homes were rated with an EPC rating of B or above (updated HBF Watt a Save Report July '23)*

Education

Within easy access to the motorway and Leicester city centre Willow Close has all the amenities on your doorstep, from shopping centres, salons and pubs farm shop, pharmacy, GPs and an excellent selection of schools .

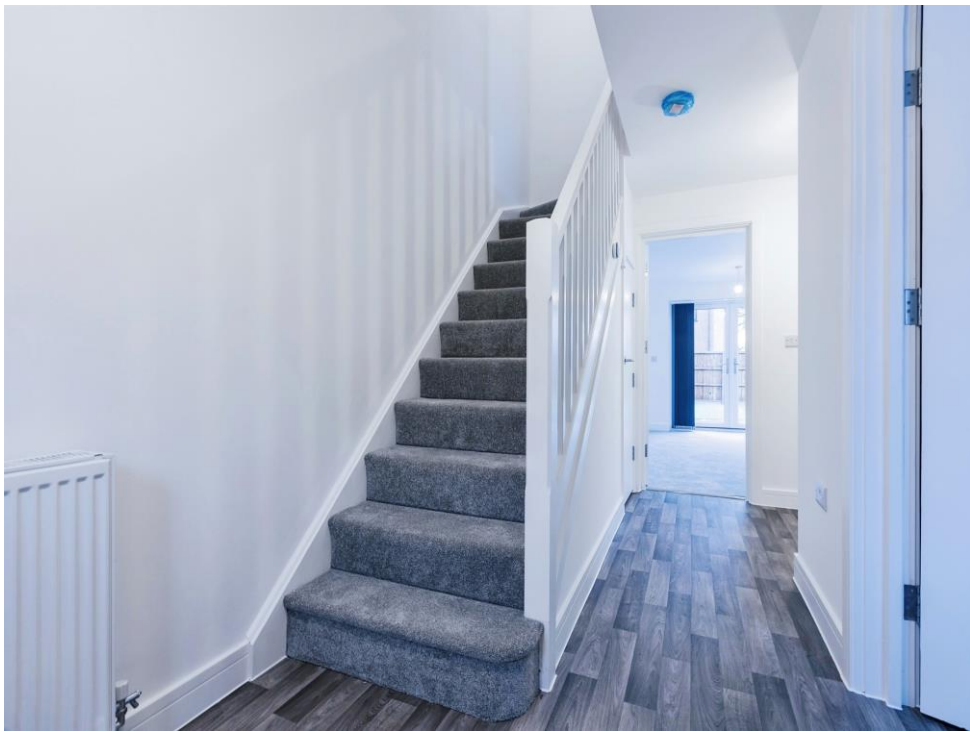
Whether you're a couple, family or looking to downsize, Willow Close makes a fantastic location for your new home.

Disclaimer

**All incentives are subject to developers T&Cs.

The images are there for visual purposes only and may differ at completion because the visual aspect of the windows and doors in particular will differ as they are just a guide to the overall representation of the build design.









To view this property please contact Connells on

T 0116 262 0022
E leicester@connells.co.uk

22-24 Halford Street
LEICESTER LE1 1JB

EPC Rating: Exempt

Tenure: Freehold

view this property online [connells.co.uk/Property/LTR322410](https://www.connells.co.uk/Property/LTR322410)



1. MONEY LAUNDERING REGULATIONS Intending purchasers will be asked to produce identification documentation at a later stage and we would ask for your co-operation in order that there will be no delay in agreeing the sale. 2. These particulars do not constitute part or all of an offer or contract. 3. The measurements indicated are supplied for guidance only and as such must be considered incorrect. Potential buyers are advised to recheck measurements before committing to any expense. 4. We have not tested any apparatus, equipment, fixtures, fittings or services and it is in the buyers interest to check the working condition of any appliances.

Connells Residential is registered in England and Wales under company number 1489613, Registered Office is Cumbria House, 16-20 Hockliffe Street, Leighton Buzzard, Bedfordshire, LU7 1GN. VAT Registration Number is 500 2481 05.

See all our properties at www.connells.co.uk | www.rightmove.co.uk | www.zoopla.co.uk

Property Ref: LTR322410 - 0002