



Not for marketing purposes INTERNAL USE ONLY

Haddenham Road
Leicester



Property Description

A three bedroom property with good access to Leicester City Centre, Cinema De Lux, Leicester Train Station and many local amenities. The local schools include Imperial Avenue Infant School, St Mary's Fields Primary School, Folville Junior School and Fullhurst Community College.

The property briefly comprises of a lounge, dining room, kitchen, 2 bedrooms on the first floor & a family bathroom, loft space having a third bedroom.

Small garden to the front of the property

To the rear of the property there is spacious low maintenance garden with patio & lawn area.

On Street Parking available.

Ground Floor

Lounge

11' 6" x 11' 10" (3.51m x 3.61m)

A lounge with a radiator, bay window, floorboards, TV point, gas and electric meter and stairs

Dining Room

15' 10" x 11' 10" (4.83m x 3.61m)

With a radiator, window, floorboards and stairs

Kitchen

13' 7" x 6' 2" (4.14m x 1.88m)

A sizeable kitchen with tiled walls and floor, a combi boiler, sink and a door to the sun room which leads to the outside

First Floor

Bedroom 2

13' x 13' 1" (3.96m x 3.99m)

Bedroom One includes a bay window, radiator, carpet flooring and light

Bedroom 3

11' 2" x 9' 2" (3.40m x 2.79m)

With carpet flooring and radiator

Bathroom

13' 7" x 6' 4" (4.14m x 1.93m)

With a radiator, window, tiled walls, a sink, spotlight, a corner bath and a shower

Loft

Bedroom 1

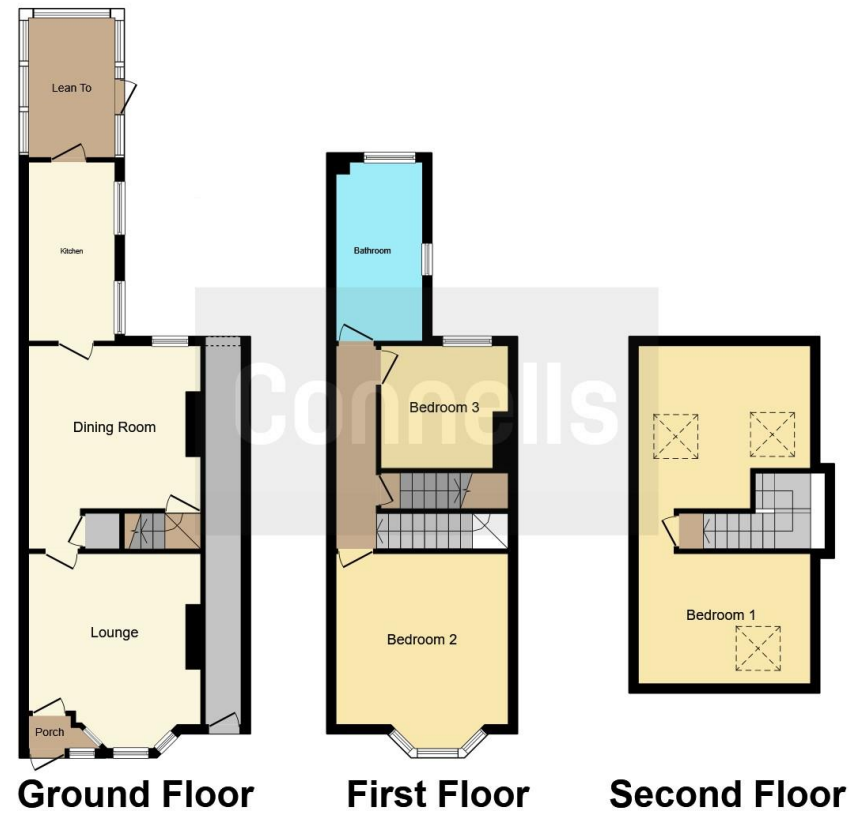
11' 7" x 16' 3" (3.53m x 4.95m)

A loft bedroom comprising of carpet and a radiator









This floorplan is for illustrative purposes only and is not drawn to scale. Measurements, floor-areas, openings and orientations are approximate. They should not be relied upon for any purpose and do not form any part of an agreement. No liability is taken for any error or mis-statement. All parties must rely on their own inspections.

To view this property please contact Connells on

T 0116 262 0022
E leicester@connells.co.uk

22-24 Halford Street
 LEICESTER LE1 1JB

EPC Rating: E

Tenure: Freehold

check out more properties at connells.co.uk



1. MONEY LAUNDERING REGULATIONS Intending purchasers will be asked to produce identification documentation at a later stage and we would ask for your co-operation in order that there will be no delay in agreeing the sale. 2. These particulars do not constitute part or all of an offer or contract. 3. The measurements indicated are supplied for guidance only and as such must be considered incorrect. Potential buyers are advised to recheck measurements before committing to any expense. 4. We have not tested any apparatus, equipment, fixtures, fittings or services and it is in the buyers interest to check the working condition of any appliances.

Connells Residential is registered in England and Wales under company number 1489613, Registered Office is Cumbria House, 16-20 Hockliffe Street, Leighton Buzzard, Bedfordshire, LU7 1GN. VAT Registration Number is 500 2481 05.

See all our properties at www.connells.co.uk | www.rightmove.co.uk | www.zoopla.co.uk

Property Ref: LTR321402 - 0002