



Connells

Drumcliff Road
LEICESTER



Property Description

Thurnby Lodge is an ideal location with good access to local schools and amenities. It is well placed for excellent transport links with the Leicester Train Station offering direct links to London St Pancras in just over an hour as well as direct services to Birmingham New Street. There is also a regular bus service in and out of Leicester City Centre alongside the array of amenities the City Centre has to offer. The property also benefits from being a short distance away from a large Tesco.

Lounge

13' 8" x 16' 11" (4.17m x 5.16m)

A spacious lounge with floorboards, window, two radiators and a door leading towards the kitchen

Kitchen/dining Room

16' 8" x 10' 7" (5.08m x 3.23m)

A spacious kitchen/dining room with tiles, windows, a radiator, hob, integrated oven, extractor fan, draws, cupboards, boiler and patio doors leading towards the garden

Bedroom One

9' 8" x 12' 11" (2.95m x 3.94m)

With laminate flooring, radiator and a window

Bedroom Two

11' x 14' 3" (3.35m x 4.34m)

A double bedroom with laminate flooring, radiator and a window

Bedroom Three

10' 4" x 7' 5" (3.15m x 2.26m)

With laminate flooring, radiator and a window

Bathroom

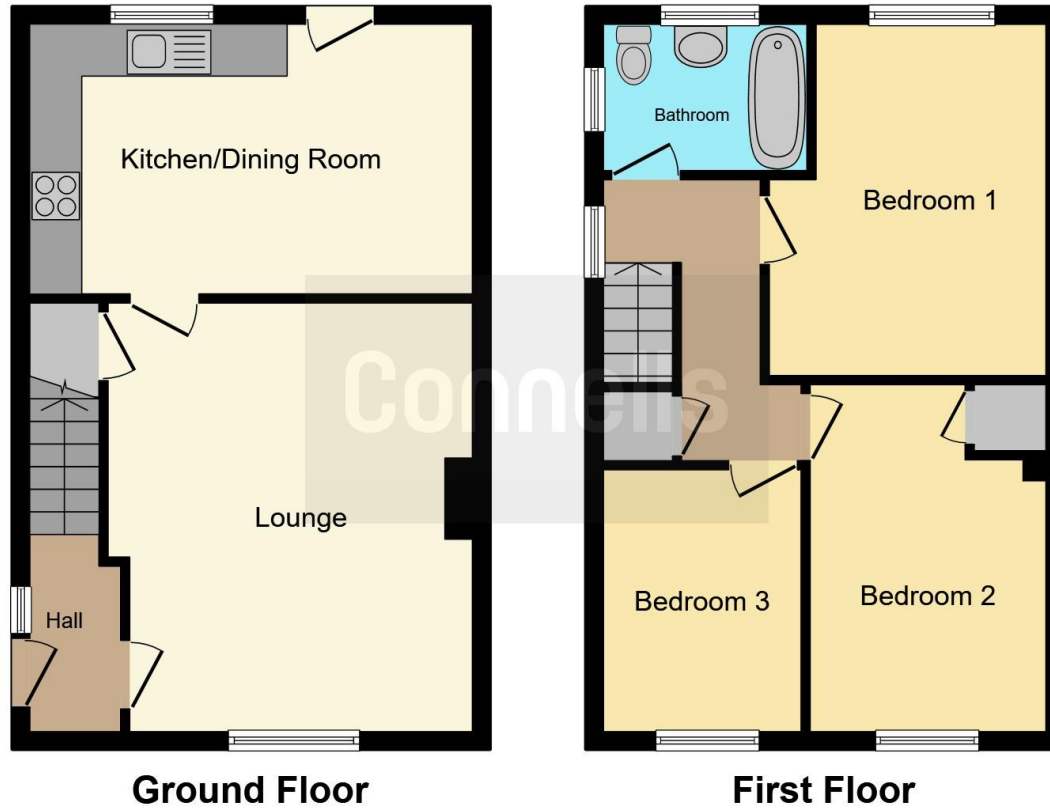
3' 11" x 7' 8" (1.19m x 2.34m)

With tiles, WC, Bath and Windows









This floorplan is for illustrative purposes only and is not drawn to scale. Measurements, floor-areas, openings and orientations are approximate. They should not be relied upon for any purpose and do not form any part of an agreement. No liability is taken for any error or mis-statement. All parties must rely on their own inspections.

To view this property please contact Connells on

T 0116 262 0022
E leicester@connells.co.uk

22-24 Halford Street
 LEICESTER LE1 1JB

EPC Rating: D

view this property online connells.co.uk/Property/LTR321975

Tenure: Freehold



1. MONEY LAUNDERING REGULATIONS Intending purchasers will be asked to produce identification documentation at a later stage and we would ask for your co-operation in order that there will be no delay in agreeing the sale. 2. These particulars do not constitute part or all of an offer or contract. 3. The measurements indicated are supplied for guidance only and as such must be considered incorrect. Potential buyers are advised to recheck measurements before committing to any expense. 4. We have not tested any apparatus, equipment, fixtures, fittings or services and it is in the buyers interest to check the working condition of any appliances.

Connells Residential is registered in England and Wales under company number 1489613, Registered Office is Cumbria House, 16-20 Hockliffe Street, Leighton Buzzard, Bedfordshire, LU7 1GN. VAT Registration Number is 500 2481 05.

See all our properties at www.connells.co.uk | www.rightmove.co.uk | www.zoopla.co.uk

Property Ref: LTR321975 - 0004