



Connells

Wilne Street
Leicester



Property Description

A two bedroom property with easy access to both the General Hospital and The Leicester Royal Infirmary. The local schools include The Imam Muhammad Adam Institute School, Imam Muhammad Adam Institute Boys School and Medway Community Primary School. The property benefits from an entrance hall, two bedrooms, lounge, dining room, kitchen, shower room and the addition of a room within the loft with on street parking.

Entrance Hall

Straight to front door

Lounge

12' 11" x 10' 10" (3.94m x 3.30m)
With laminate flooring, a radiator and a metre cupboard

Dining Room

With a window and a radiator

Kitchen

7' 1" x 9' 4" (2.16m x 2.84m)
The kitchen benefits from gas hobs, oven, radiator, sink and tiles

Landing

With a radiator, fitted carpet,

Bedroom One

10' 11" x 12' 11" (3.33m x 3.94m)
With a radiator, carpet and an in wall wardrobe

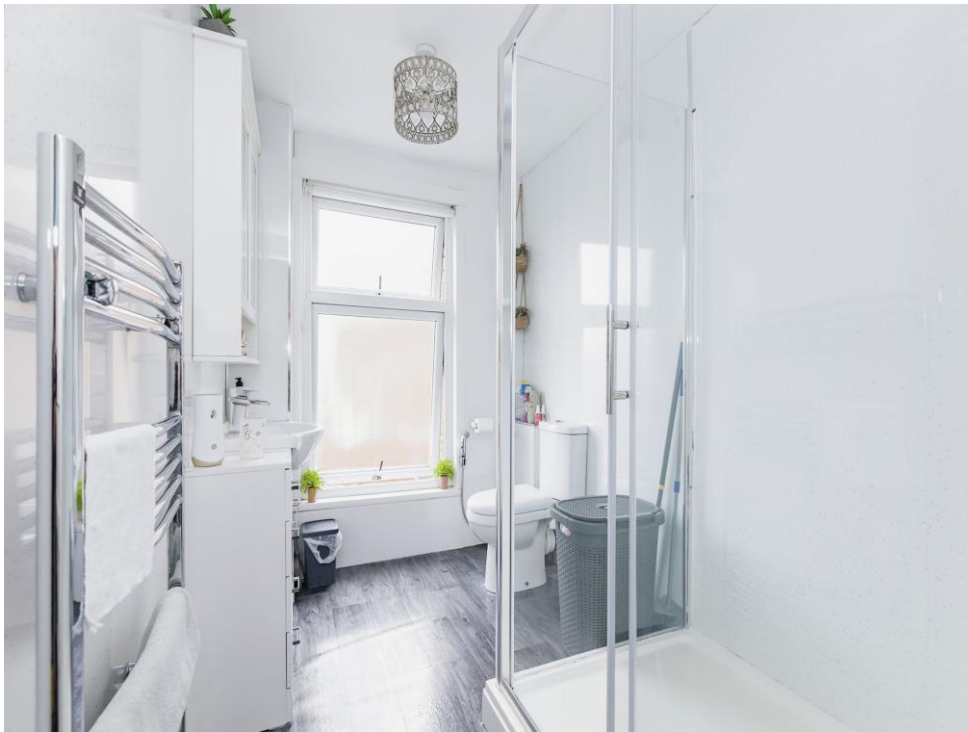
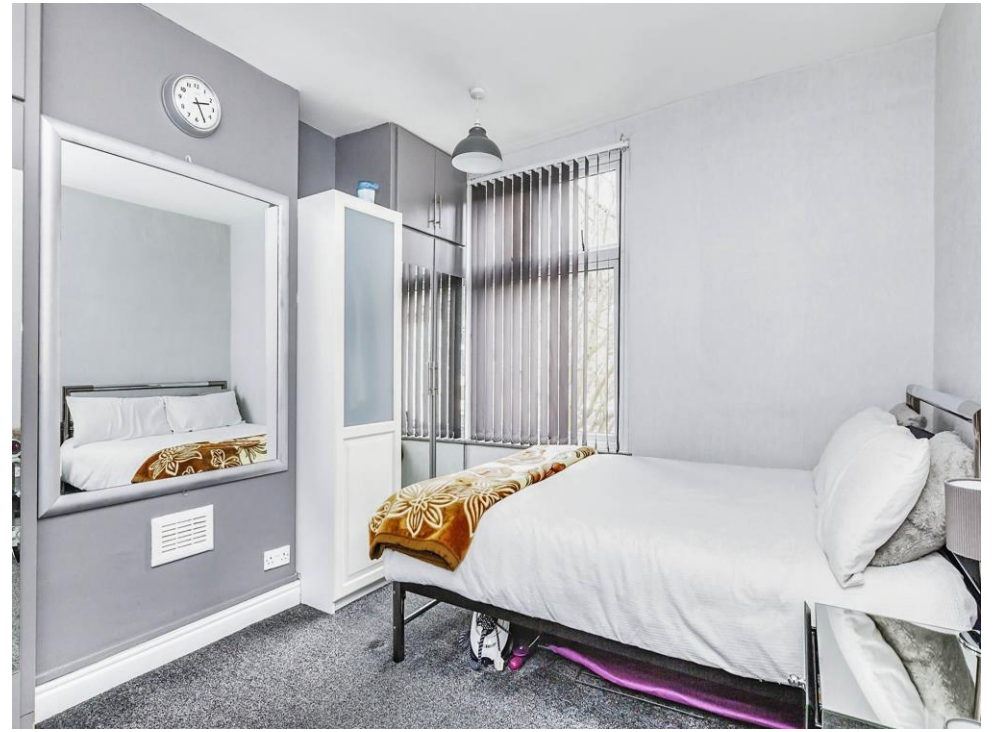
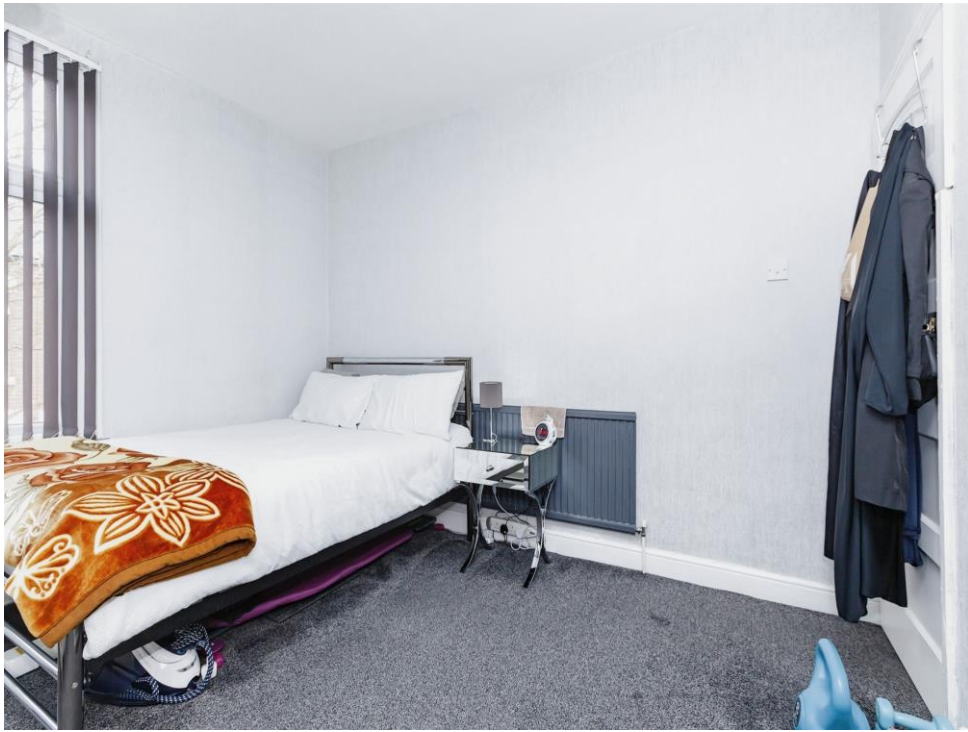
Bedroom Two

Located in the loft with a carpet, radiator,

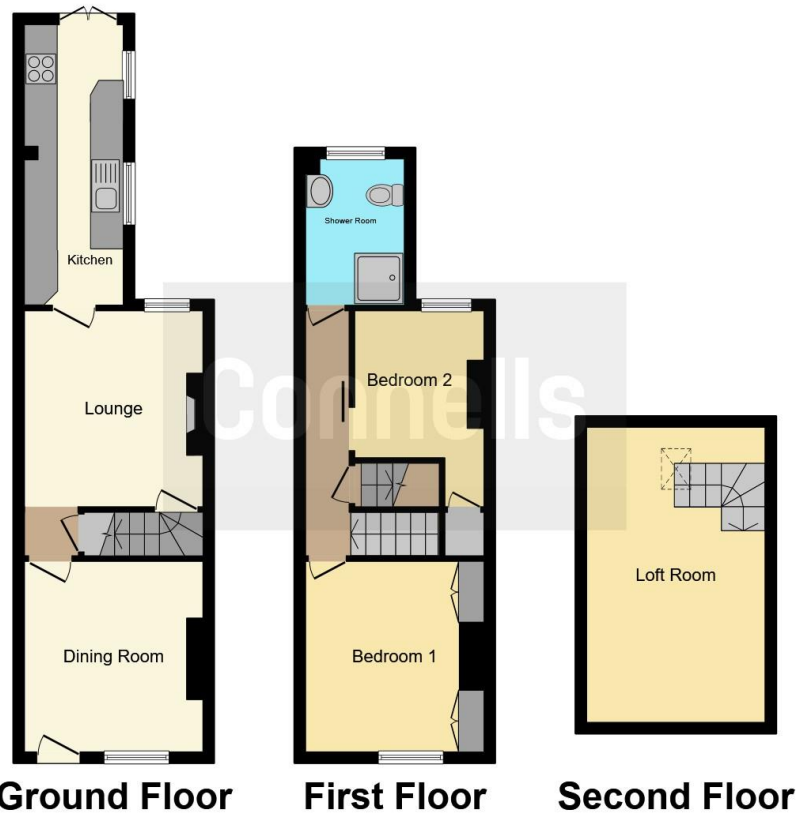
Shower Room

The Shower room comprises of a shower, sink, radiator and lino









This floorplan is for illustrative purposes only and is not drawn to scale. Measurements, floor-areas, openings and orientations are approximate. They should not be relied upon for any purpose and do not form any part of an agreement. No liability is taken for any error or mis-statement. All parties must rely on their own inspections.

To view this property please contact Connells on

T 0116 262 0022
E leicester@connells.co.uk

22-24 Halford Street
 LEICESTER LE1 1JB

EPC Rating: D

Tenure: Freehold

view this property online [connells.co.uk/Property/LTR321395](https://www.connells.co.uk/Property/LTR321395)



1. MONEY LAUNDERING REGULATIONS Intending purchasers will be asked to produce identification documentation at a later stage and we would ask for your co-operation in order that there will be no delay in agreeing the sale. 2. These particulars do not constitute part or all of an offer or contract. 3. The measurements indicated are supplied for guidance only and as such must be considered incorrect. Potential buyers are advised to recheck measurements before committing to any expense. 4. We have not tested any apparatus, equipment, fixtures, fittings or services and it is in the buyers interest to check the working condition of any appliances.

Connells Residential is registered in England and Wales under company number 1489613, Registered Office is Cumbria House, 16-20 Hockliffe Street, Leighton Buzzard, Bedfordshire, LU7 1GN. VAT Registration Number is 500 2481 05.

See all our properties at www.connells.co.uk | www.rightmove.co.uk | www.zoopla.co.uk

Property Ref: LTR321395 - 0012