



Connells

Plym Close
Torquay



Property Description

Welcome to Plym Close, Torquay! This charming semi-detached house presents an excellent opportunity for those seeking a comfortable and spacious home in a desirable location. With its three bedrooms and a range of appealing features, this property offers a delightful living experience.

Upon entering, you will be greeted by a bright and inviting living room, perfect for relaxing with family and friends. The large windows fill the space with natural light, creating a warm and welcoming ambiance. Adjacent to the living room is a well-appointed kitchen, equipped with modern appliances and ample storage, making meal preparation a breeze.

The first floor is home to three generously sized bedrooms, each providing a peaceful retreat for rest and relaxation. The additional bedrooms are perfect for children, guests, or even a home office, providing versatility to suit your needs. The property also features a well-maintained family bathroom on this level, offering both style and functionality.

Outside, the property benefits from a private and enclosed garden, providing a serene outdoor space for recreation, gardening, or simply enjoying the fresh air. The garden is low maintenance, allowing for easy upkeep and offering a perfect spot for alfresco dining or entertaining during the warmer months. This house is located in a sought-after neighbourhood of Torquay, known for its tranquillity and family-friendly atmosphere.



Living Room

11' 1" max x 20' max (3.38m max x 6.10m max)

Double glazed window to front of property, carpet flooring, radiator and traditional fire place.

Kitchen

7' 6" max x 12' 2" max (2.29m max x 3.71m max)

Modern kitchen with white base units, tiled walls, integrated hob and sink and PVC door to rear.

Bedroom 1

12' 3" max x 12' max (3.73m max x 3.66m max)

Carpet flooring, radiator and PVC window.

Bedroom 2

9' 3" x 7' 7" (2.82m x 2.31m)

Carpet flooring, radiator and PVC window.

Bedroom 3

6' 9" max x 12' max (2.06m max x 3.66m max)

Carpet flooring, radiator and PVC window.

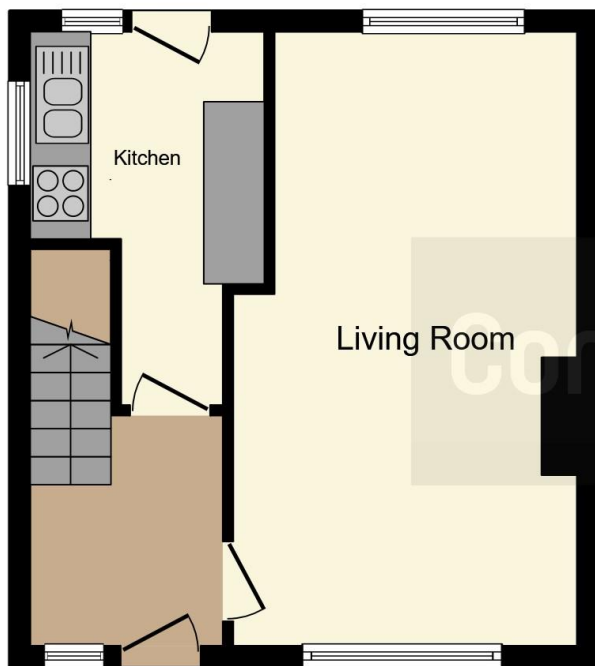
Bathroom

Comprising of tiled walls, bath and shower.

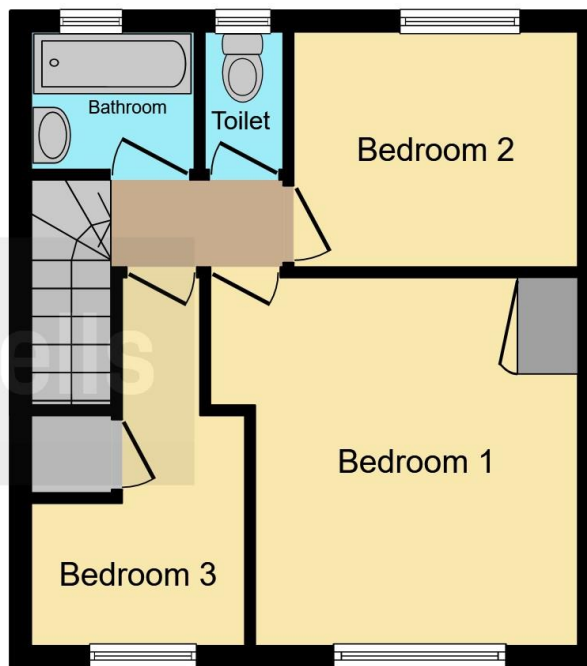
W.C

Separate WC with tiled walls and radiator.





Ground Floor



First Floor

This floorplan is for illustrative purposes only and is not drawn to scale. Measurements, floor-areas, openings and orientations are approximate. They should not be relied upon for any purpose and do not form any part of an agreement. No liability is taken for any error or mis-statement. All parties must rely on their own inspections.

To view this property please contact Connells on

T 01803 213 641
E torquay@connells.co.uk

115 Union Street
 TORQUAY TQ1 3DW

EPC Rating: C

view this property online connells.co.uk/Property/TQY313292



Tenure: Freehold



1. MONEY LAUNDERING REGULATIONS Intending purchasers will be asked to produce identification documentation at a later stage and we would ask for your co-operation in order that there will be no delay in agreeing the sale. 2. These particulars do not constitute part or all of an offer or contract. 3. The measurements indicated are supplied for guidance only and as such must be considered incorrect. Potential buyers are advised to recheck measurements before committing to any expense. 4. We have not tested any apparatus, equipment, fixtures, fittings or services and it is in the buyers interest to check the working condition of any appliances.

Connells Residential is registered in England and Wales under company number 1489613, Registered Office is Cumbria House, 16-20 Hockliffe Street, Leighton Buzzard, Bedfordshire, LU7 1GN. VAT Registration Number is 500 2481 05.

See all our properties at www.connells.co.uk | www.rightmove.co.uk | www.zoopla.co.uk

Property Ref: TQY313292 - 0003