





Property Description

**** Guide price £325,000 - £350,000 ****
Connells is delighted to present this rare gem - a beautiful early 1900s detached double bay-fronted home, situated in the highly sought-after level Preston area. Steeped in history and brimming with character, this home offers a perfect blend of period charm and modern convenience. Properties of this calibre rarely come to market, and when they do, they don't stay for long. This early 1900s detached double bay-fronted home has been lovingly cared for by its current owner, and now it's ready to welcome a new chapter.

With its stunning architecture, bright and spacious interiors, and enchanting gardens, this home offers a unique blend of history, charm, and practicality. Whether you're seeking a family home filled with warmth and character, or a peaceful retreat close to nature and amenities, this property ticks every box.

Don't miss out on this extraordinary opportunity. Contact Connells today to arrange your viewing and experience firsthand the timeless elegance of this exceptional home. It's ready to move into and waiting for its next chapter to begin.

Curb Appeal

As you approach, the home's striking double bay-fronted façade immediately captures your attention, evoking a sense of timeless elegance. Steps lead you through the picturesque front gardens, where a delightful seating area rests beneath a mature magnolia tree. The soft shade of its blooms, combined

with vibrant flower and shrub borders, sets a tranquil and inviting tone - the perfect introduction to what lies beyond.

The exterior showcases classic early 1900s architecture, with period features that have been lovingly maintained over the years. The path meanders gently towards the front door, where you'll find yourself eager to step inside and discover the warmth and charm this home has to offer.

Grand Welcome

Upon entering, you're welcomed into a bright, airy hallway that serves as the heart of the home. Natural light floods the space, highlighting the original features that make this property so unique. The high ceilings and period details create a sense of grandeur, while the warmth and care that have gone into preserving this home are immediately evident.

The hallway effortlessly flows into the principal living spaces, where you'll find room after room filled with charm and character.

Living Room & Dining Room

The large double-aspect lounge and dining area is undoubtedly one of the home's standout features. Bay-fronted windows allow sunlight to pour into the room, accentuating the soaring ceilings and beautifully preserved exposed beams. The high ceilings enhance the sense of space, while the original picture rails and architectural details serve as a gentle reminder of the home's heritage.

This room offers incredible versatility, providing ample space for both relaxation and entertaining. The lounge area invites you to unwind, with plenty of room for plush seating and personal touches, while the dining area is perfect for hosting dinner parties or enjoying family meals.

From here, French doors open onto a sun terrace - a serene spot to soak in the peaceful surroundings while overlooking the level rear gardens. Whether sipping morning coffee or enjoying an evening glass of wine, this terrace is sure to become a favorite retreat.

Kitchen

The large kitchen is every home cook's dream, offering a perfect balance of functionality and charm. Positioned to overlook the stunning rear gardens, this space is flooded with natural light, creating a bright and inviting atmosphere. The generous countertops and ample cabinetry provide plenty of storage and workspace, making meal preparation a joy.

The kitchen seamlessly flows into a practical utility room, ensuring household chores are kept tucked away from the main living areas. Adjacent to the utility is a convenient downstairs cloakroom, adding to the home's functionality. Completing this level is a well-appointed downstairs shower room, ideal for guests or busy mornings.

Additional Reception Room

A further reception room, also bay-fronted, offers yet another versatile space. With its high ceilings, original picture rails, and generous proportions, this room could serve as a formal sitting room, a library, or even a home office. The possibilities are endless, and whatever purpose it serves, it exudes warmth and character.

Spacious Bedrooms & Bathroom

The staircase leads you to a light-filled landing that offers access to four double bedrooms - each thoughtfully designed to maximize comfort and space. The landing itself is an impressive space, bathed in natural light and offering a wonderful sense of openness.

The Master Bedroom is a true retreat, boasting a beautiful bay window that floods the room with light. High ceilings and original features lend a sense of grandeur, while the spacious layout provides ample room for a king-sized bed, wardrobes, and additional furnishings.

The remaining three double bedrooms are equally generous in size, each offering its own unique charm. Whether used as guest rooms, children's rooms, or even a dressing room or home office, these spaces provide endless possibilities.

The family bathroom has been thoughtfully designed, combining modern fixtures with timeless elegance. Featuring a classic bathtub and contemporary fittings, it's the perfect place to unwind after a long day. Additionally, a separate WC adds further convenience, ensuring busy mornings run smoothly.

Beautiful Gardens

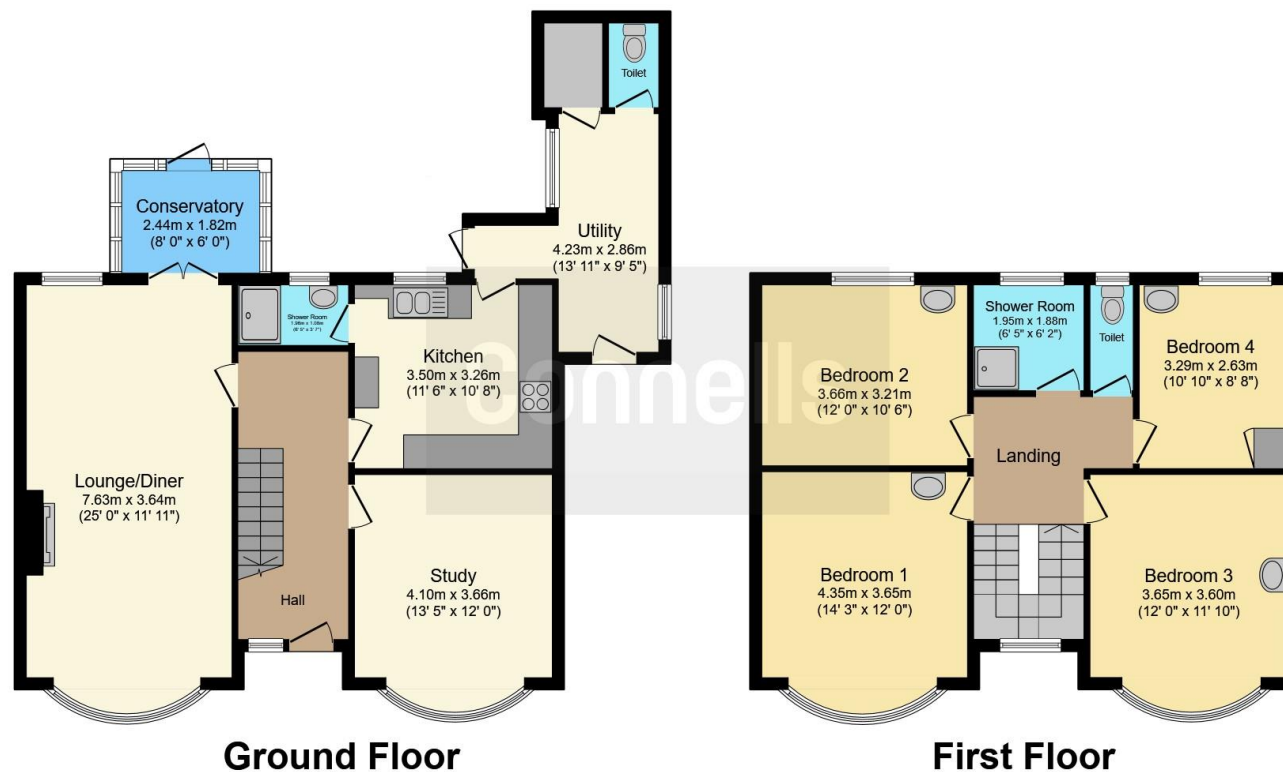
Stepping outside, you're greeted by beautifully landscaped rear gardens - a private oasis framed by high Devon stone walling. Mature trees, shrubs, and climbing plants create a lush and tranquil backdrop, while the carefully curated flower beds add bursts of colour throughout the seasons.

The sun terrace, accessible from the dining room, offers the perfect spot for al fresco dining or simply soaking up the serenity. The lawned area provides ample space for









Total floor area 148.8 m² (1,602 sq.ft.) approx

This floor plan is for illustrative purposes only. It is not drawn to scale. Any measurements, floor areas (including any total floor area), openings and orientation are approximate. No details are guaranteed, they cannot be relied upon for any purpose and they do not form part of any agreement. No liability is taken for any error, omission or misstatement. A party must rely upon its own inspection(s). Powered by www.focalagent.com

To view this property please contact Connells on

T 01803 400 888
E paignton@connells.co.uk

51 Hyde Road
 PAIGNTON TQ4 5BP

EPC Rating: Awaited

Tenure: Freehold

view this property online connells.co.uk/Property/PGN312658



1. MONEY LAUNDERING REGULATIONS Intending purchasers will be asked to produce identification documentation at a later stage and we would ask for your co-operation in order that there will be no delay in agreeing the sale. 2. These particulars do not constitute part or all of an offer or contract. 3. The measurements indicated are supplied for guidance only and as such must be considered incorrect. Potential buyers are advised to recheck measurements before committing to any expense. 4. We have not tested any apparatus, equipment, fixtures, fittings or services and it is in the buyers interest to check the working condition of any appliances.

Connells Residential is registered in England and Wales under company number 1489613, Registered Office is Cumbria House, 16-20 Hockliffe Street, Leighton Buzzard, Bedfordshire, LU7 1GN. VAT Registration Number is 500 2481 05.

See all our properties at www.connells.co.uk | www.rightmove.co.uk | www.zoopla.co.uk

Property Ref: PGN312658 - 0002