



Connells

Alexandra Road
Walsall



Property Description

An ideal opportunity for first time buyers or investors to purchase this end terraced property situated close to local amenities, transport links and schools. The property briefly comprises of open plan kitchen/diner, lounge, ground floor bathroom, three bedrooms and rear garden.

Access Via

Front door leading into

Dining Area

17' 5" Max x 12' 1" Max (5.31m Max x 3.68m Max)

Having double glazed window to the front, radiator, stairs up to the first floor and doors leading into

Kitchen Area

6' 11" x 7' 11" (2.11m x 2.41m)

having double glazed window to the rear, wall and base units with work surfaces over, stainless steel sink and drainer, integrated oven with gas hob and cooker hood over and space for appliances

Bathroom

Having double glazed window to the rear, corner bath, wc, hand wash basin and radiator.

Lounge

10' 4" Max x 20' 4" Max (3.15m Max x 6.20m Max)

having double glazed window to the front and double doors to the rear garden, two radiators and meter cupboard.

First Floor

Landing

Having doors into

Bedroom One

10' 4" Max x 12' 4" Max (3.15m Max x 3.76m Max)

Having double glazed window to the front and radiator

Bedroom Two

11' 5" Max x 12' 3" Max (3.48m Max x 3.73m Max)

Having double glazed window to the front and radiator.

Bedroom Three

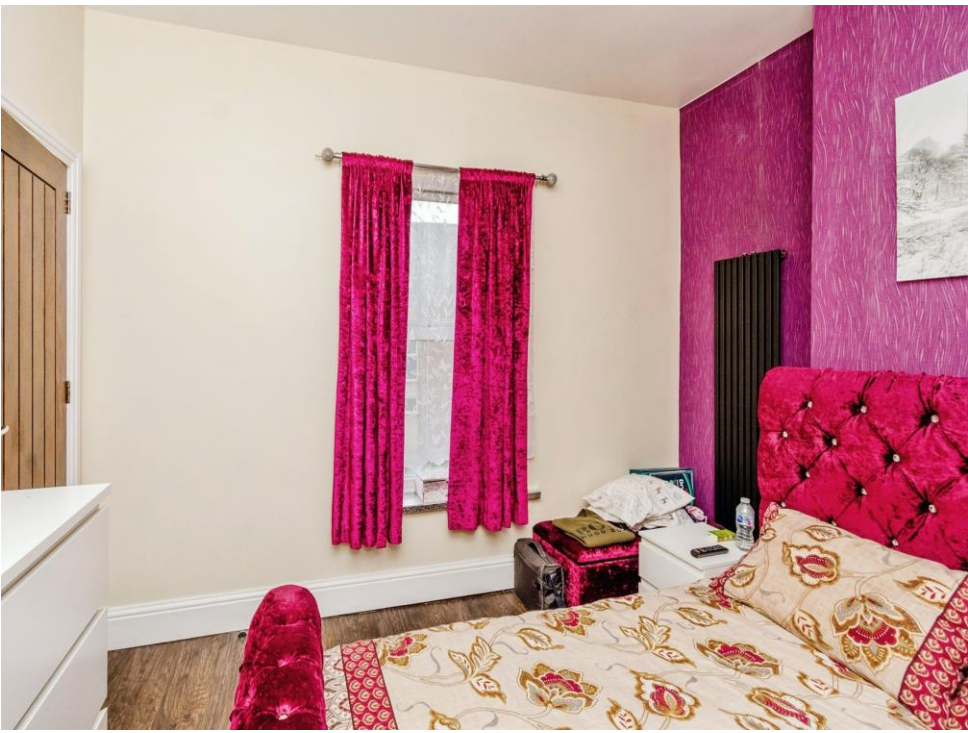
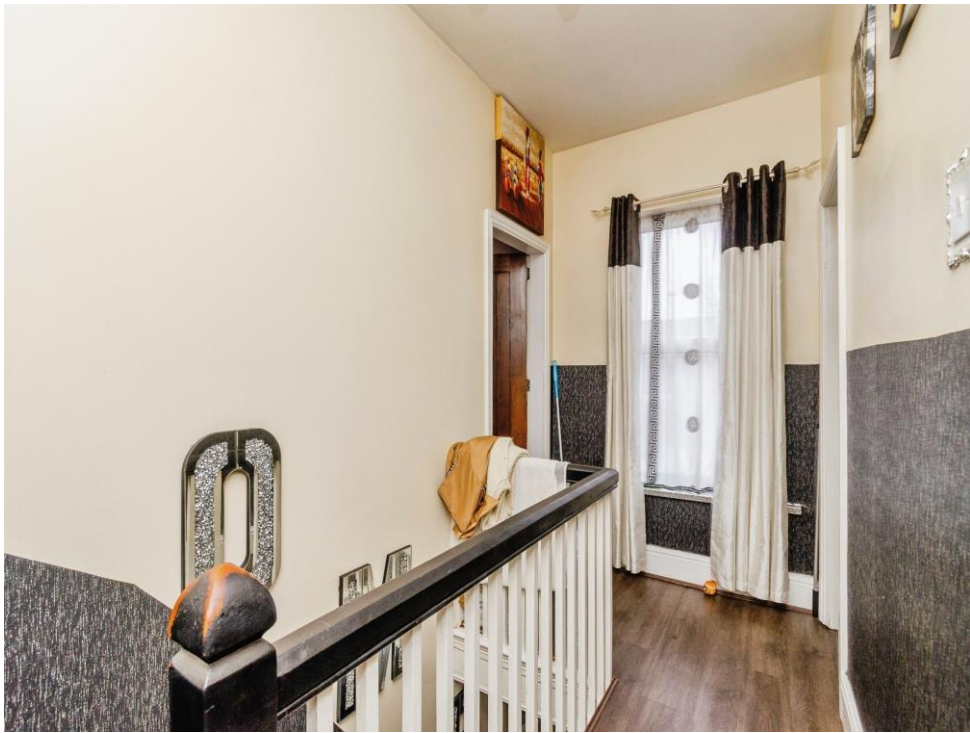
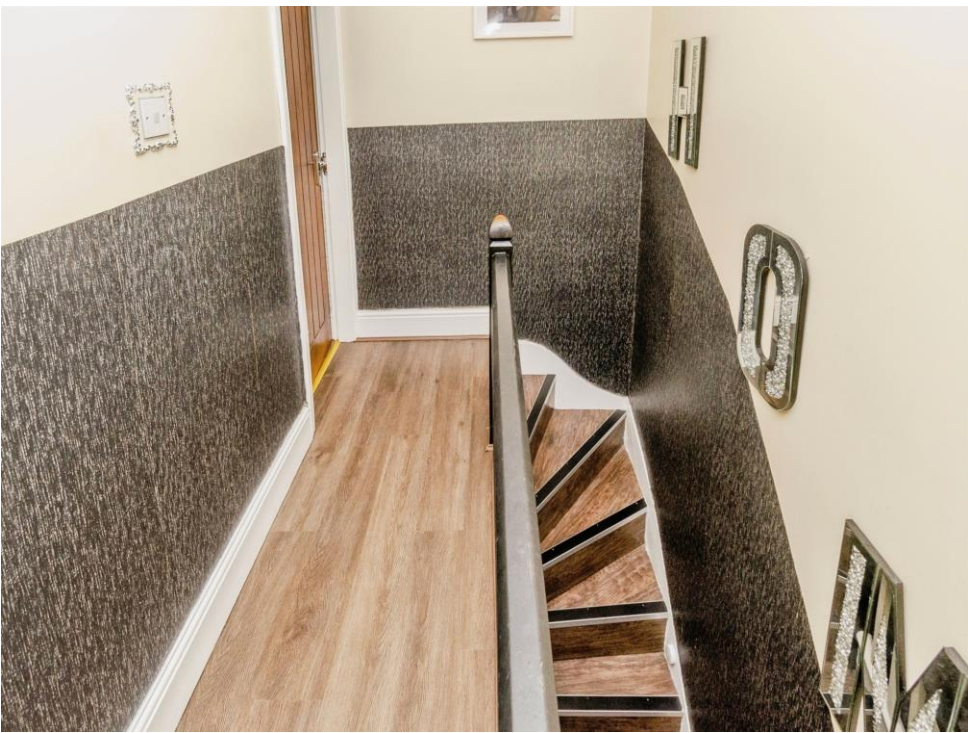
Irregular Shaped Room 8' 9" Max x 11' 5" Max (2.67m Max x 3.48m)

having double glazed window to the side and radiator.

Outside

To the rear of the property is a slabbed patio area, grass lawns, gated side access and water tap









This floor plan is for illustrative purposes only. It is not drawn to scale. Any measurements, floor areas (including any total floor area), openings and orientation are approximate. No details are guaranteed, they cannot be relied upon for any purpose and they do not form part of any agreement. No liability is taken for any error, omission or misstatement. A party must rely upon its own inspection(s). Powered by www.focalagent.com

To view this property please contact Connells on

T 01922 721 000
E walsall@connells.co.uk

57-59 Bridge Street
 WALSALL WS1 1JQ

EPC Rating: D

Tenure: Freehold

view this property online connells.co.uk/Property/WSL317560



1. MONEY LAUNDERING REGULATIONS Intending purchasers will be asked to produce identification documentation at a later stage and we would ask for your co-operation in order that there will be no delay in agreeing the sale. 2. These particulars do not constitute part or all of an offer or contract. 3. The measurements indicated are supplied for guidance only and as such must be considered incorrect. Potential buyers are advised to recheck measurements before committing to any expense. 4. We have not tested any apparatus, equipment, fixtures, fittings or services and it is in the buyers interest to check the working condition of any appliances.

Connells Residential is registered in England and Wales under company number 1489613, Registered Office is Cumbria House, 16-20 Hockliffe Street, Leighton Buzzard, Bedfordshire, LU7 1GN. VAT Registration Number is 500 2481 05.

See all our properties at www.connells.co.uk | www.rightmove.co.uk | www.zoopla.co.uk

Property Ref: WSL317560 - 0003