





Whitmore Street  
Walsall WS1 4LL

for sale offers in the region of  
**£175,000**



### Property Description

This traditional style three bedroom mid terraced property is conveniently located close to local amenities and transport links and briefly comprises of entrance hall, through lounge diner. kitchen, ground floor shower room, Three bedrooms to the first floor and rear garden.

### Access Via

Front Door

### Lounge Area

11' 11" Max x 11' 4" Max ( 3.63m Max x 3.45m Max )

Having double glazed window to the front, Fireplace and Radiator.

### Dining Room

13' 2" Max x 12' Max ( 4.01m Max x 3.66m 5Max )

Having double glazed window to the rear, door to stairs up to first floor, radiator and door to

### Kitchen

9' 5" x 6' 9" ( 2.87m x 2.06m )

Having double glazed window to the side, wall and base units with work surfaces over, stainless steel sink and drainer, space for appliances, radiator.

### Wet Room

2Having double glazed window to the side, towel rack radiator, shower, wc and hand wash basin,



## First Floor

### Landing

Having double glazed window to the side, radiator, loft access and doors into

### Bedroom One

12' Max x 11' 5" Max ( 3.66m Max x 3.48m Max )

Having double glazed window to the front and radiator

### Bedroom Two

13' 2" x 9' ( 4.01m x 2.74m )

Having double glazed window to the rear, storage cupboard and radiator

### Bedroom Three

5' 8" Max x 9' 8" Max ( 1.73m Max x 2.95m Max )

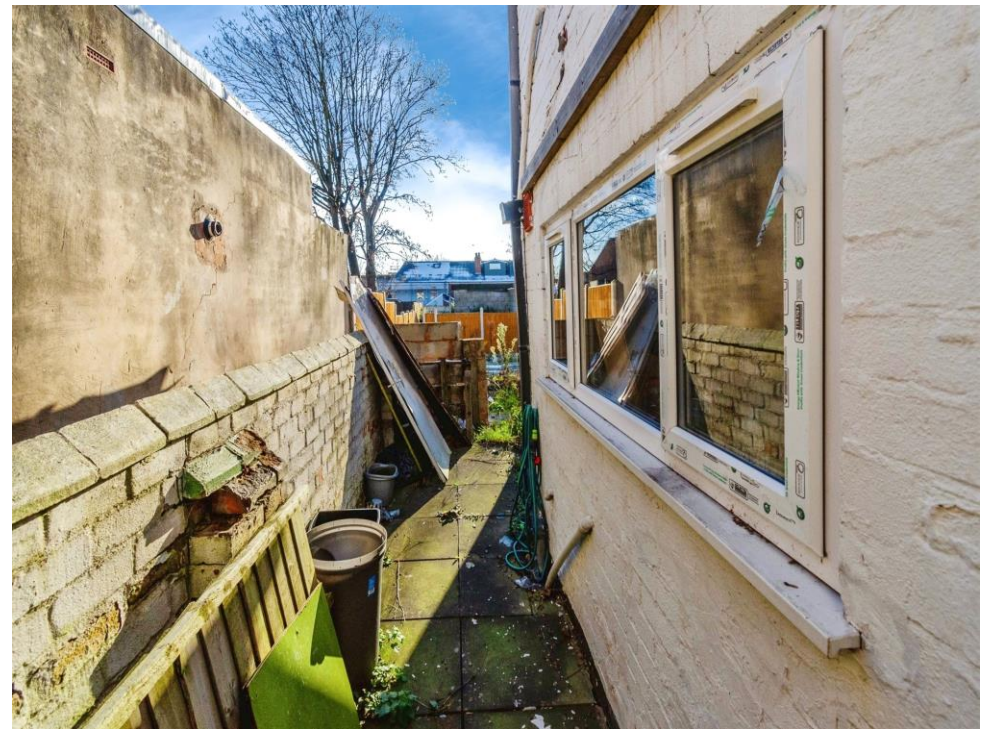
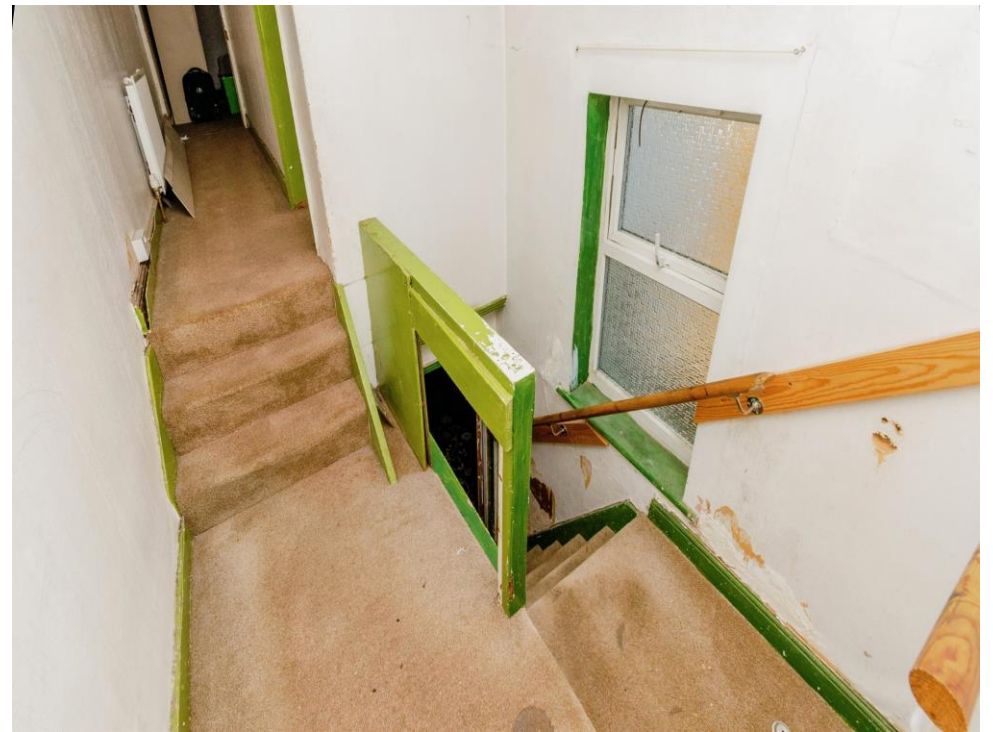
Having Double glazed window to the rear

### Outside

To the rear of the property is a concrete yard area with water tap, lawned garden and shared access providing right of way.



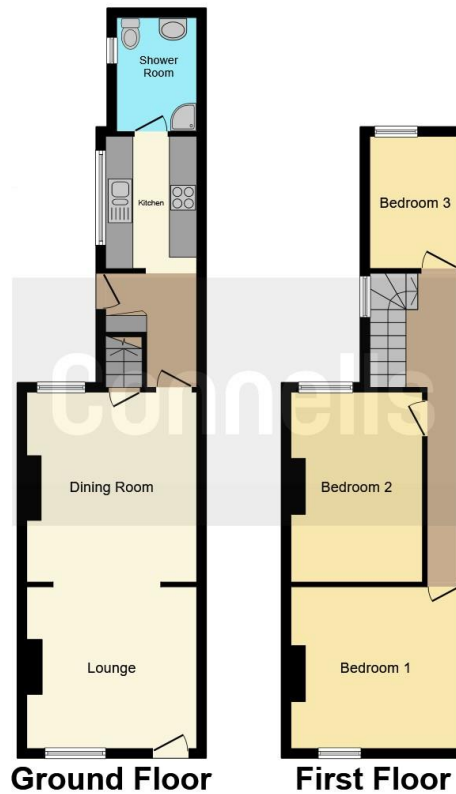












This floor plan is for illustrative purposes only. It is not drawn to scale. Any measurements, floor areas (including any total floor area), openings and orientation are approximate. No details are guaranteed, they cannot be relied upon for any purpose and they do not form part of any agreement. No liability is taken for any error, omission or misstatement. A party must rely upon its own inspection(s). Powered by [www.focalagent.com](http://www.focalagent.com)

To view this property please contact Connells on

**T 01922 721 000**  
**E [walsall@connells.co.uk](mailto:walsall@connells.co.uk)**

57-59 Bridge Street  
 WALSALL WS1 1JQ

**EPC Rating: D**

Tenure: Freehold

**view this property online** [connells.co.uk/Property/WSL316817](http://connells.co.uk/Property/WSL316817)



1. MONEY LAUNDERING REGULATIONS Intending purchasers will be asked to produce identification documentation at a later stage and we would ask for your co-operation in order that there will be no delay in agreeing the sale. 2. These particulars do not constitute part or all of an offer or contract. 3. The measurements indicated are supplied for guidance only and as such must be considered incorrect. Potential buyers are advised to recheck measurements before committing to any expense. 4. We have not tested any apparatus, equipment, fixtures, fittings or services and it is in the buyers interest to check the working condition of any appliances.

Connells Residential is registered in England and Wales under company number 1489613, Registered Office is Cumbria House, 16-20 Hockliffe Street, Leighton Buzzard, Bedfordshire, LU7 1GN. VAT Registration Number is 500 2481 05.

**See all our properties at [www.connells.co.uk](http://www.connells.co.uk) | [www.rightmove.co.uk](http://www.rightmove.co.uk) | [www.zoopla.co.uk](http://www.zoopla.co.uk)**

Property Ref: WSL316817 - 0006