



Connells

Union Street
Walsall



Property Description

Benefiting from No Upward Chain, this mid-terrace property is conveniently positioned close to Walsall Town Centre and briefly comprises of entrance hall, fitted kitchen/diner, lounge, first floor bathroom, two double bedrooms, enclosed rear garden and off road parking.

Access Via

A double glazed door opening into:

Entrance Hall

Having storage cupboard and doors to:

Fitted Kitchen

15' 8" x 9' 10" (4.78m x 3.00m)

Having a double glazed window to the front and rear, a range of fitted wall and base units with work-tops over, stainless steel sink and drainer, cooker point, plumbing for washing machine, space for appliances, two storage cupboards, radiator and door to rear hallway.

Lounge

15' 8" x 9' 4" (4.78m x 2.84m)

Having a double glazed window to the rear and radiator.

Rear Hall

Having stairs rising to first floor, storage cupboard and double glazed door to rear.

First Floor

Landing

Having radiator and doors to:

Bedroom One

15' 8" x 9' 10" (4.78m x 3.00m)

Having a double glazed window to the rear, storage cupboard and radiator.

Bedroom Two

13' 8" max x 9' 10" (4.17m max x 3.00m)

Having a double glazed window to the rear and radiator.

Wc

Having double glazed window to the front and low level wc.

Bathroom

Having a double glazed window to the front, bath with shower attachment over, wash-hand basin, heated towel rail, cupboard housing GCH boiler.

Outside

To the rear of the property is an enclosed garden having panel fencing, slabbed patio area, brick-built outbuilding and gate

providing side access.

To the front of the property is a driveway providing off road parking.

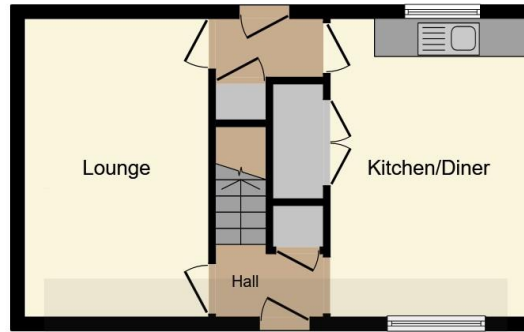
Agents Note

Currently the vendors details do not match the registered title at land registry. Please ask the branch for more details.

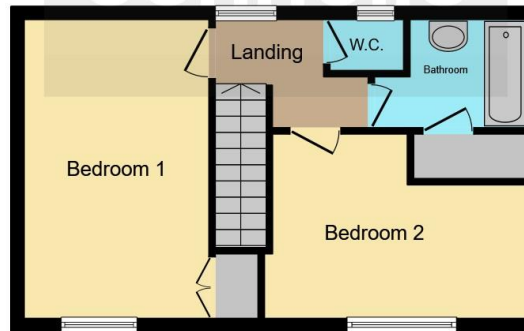








Ground Floor



First Floor

This floor plan is for illustrative purposes only. It is not drawn to scale. Any measurements, floor areas (including any total floor area), openings and orientation are approximate. No details are guaranteed, they cannot be relied upon for any purpose and they do not form part of any agreement. No liability is taken for any error, omission or misstatement. A party must rely upon its own inspection(s). Powered by www.focalagent.com

To view this property please contact Connells on

T 01922 721 000
E walsall@connells.co.uk

57-59 Bridge Street
WALSALL WS1 1JQ

EPC Rating: D

Tenure: Freehold

view this property online connells.co.uk/Property/WSL317198



1. MONEY LAUNDERING REGULATIONS Intending purchasers will be asked to produce identification documentation at a later stage and we would ask for your co-operation in order that there will be no delay in agreeing the sale. 2. These particulars do not constitute part or all of an offer or contract. 3. The measurements indicated are supplied for guidance only and as such must be considered incorrect. Potential buyers are advised to recheck measurements before committing to any expense. 4. We have not tested any apparatus, equipment, fixtures, fittings or services and it is in the buyers interest to check the working condition of any appliances.

Connells Residential is registered in England and Wales under company number 1489613, Registered Office is Cumbria House, 16-20 Hockliffe Street, Leighton Buzzard, Bedfordshire, LU7 1GN. VAT Registration Number is 500 2481 05.

See all our properties at www.connells.co.uk | www.rightmove.co.uk | www.zoopla.co.uk

Property Ref: WSL317198 - 0004