



Connells

The Fairways Finlake Resort & Spa
Chudleigh Newton Abbot



Property Description

Nestled within the serene and picturesque Finlake Resort & Spa, 57 The Fairways offers a luxurious retreat in the heart of Devon's charming countryside. This wonderful property is a haven of tranquility, providing an ideal balance of relaxation and activity to cater to all preferences.

The property boasts a spacious, open plan living area which is elegantly designed for comfort and style, perfect for unwinding after a day of exploring the resorts amenities.

The kitchen is fully equipped, ensuring a seamless and convenient stay.

There are two good size bedrooms, the master bedroom with a king size bed and ensuite and a twin bedroom along with a family bathroom.

Enjoy the fresh Devon air on your own private outdoor area, complete with hot tub and garden furniture which is ideal for relaxing, al fresco dining or simply soaking up the sun.

As a resident of the Lodge, you'll have access to Finlake Resorts comprehensive range of facilities, including fitness classes, a swimming pool, waterpark, and the indulgent Sirona Spa. The resort features a restaurant and bar where you can enjoy delicious meals and socialise.

Conveniently located just minutes from the A38, the lodge offer easy access to the surrounding area of Devon, including local beaches and Exeter City Centre.

Front Of The Property

Allocated parking for two cars a few steps away from the main entrance to the lodge. uPVC door leads into the open plan living area.

Open Plan Living Space

Living/Dining Area

21' 1" max x 18' 2" max (6.43m max x 5.54m max)

Double glazed windows surround the lodge allowing ample of natural light to flow through, two double glazed patio doors lead onto the decking area. The living area comprises a cosy corner sofa, armchair, feature fireplace with electric fire, coffee table and a wall mounted TV. The dining area contains an extendable dining table and 6 padded dining chairs.

Kitchen

10' 1" max x 14' 4" max (3.07m max x 4.37m max)

A fully fitted contemporary kitchen comprising a range base units and eye level cupboards with drawers, roll top work surfaces, cupboard houses a gas combination boiler, range of integrated Bosch appliances including fridge freezer, washing machine, dishwasher, double oven with grill, electric hob with brushed steel splash back and extractor hood. A central island with wine cooler, inset sink with mixer tap and drainer and breakfast bar with stools. Under and over cupboard lighting. Inset chi gin down lighters. There is also a microwave, toaster, and designer radiator.

Master Bedroom

12' 2" max x 13' 2" max (3.71m max x 4.01m max)

Two large sets of French doors opening into the bedroom, double glazed window, 2 slimline designer radiators, 2 fitted wardrobes providing hanging and shelving space, fitted dressing table and king size bed with bedside tables and lamps, chest of drawers and a television aerial point with socket. Access to: -

Ensuite Shower Room

Walk in shower cubicle with fixed shower head and removable shower attachment, fully tiled interior, wash hand basin set into vanity unit with mixer tap and tiled splash back, inset down lighters, extractor fan, tiled floor, door to WC with separate extractor fan and obscured high level window.

Bedroom Two

12' 6" max x 8' 5" max (3.81m max x 2.57m max)

Double glazed opening window, twin bunk beds, two fitted cupboards with hanging space and shelving, a mirror and 2 wall mounted radiators.

Bathroom

Obscure double glazed window, bath with mixer taps, WC, vanity wash hand basin and a wall mounted chrome heated towel rail.

External

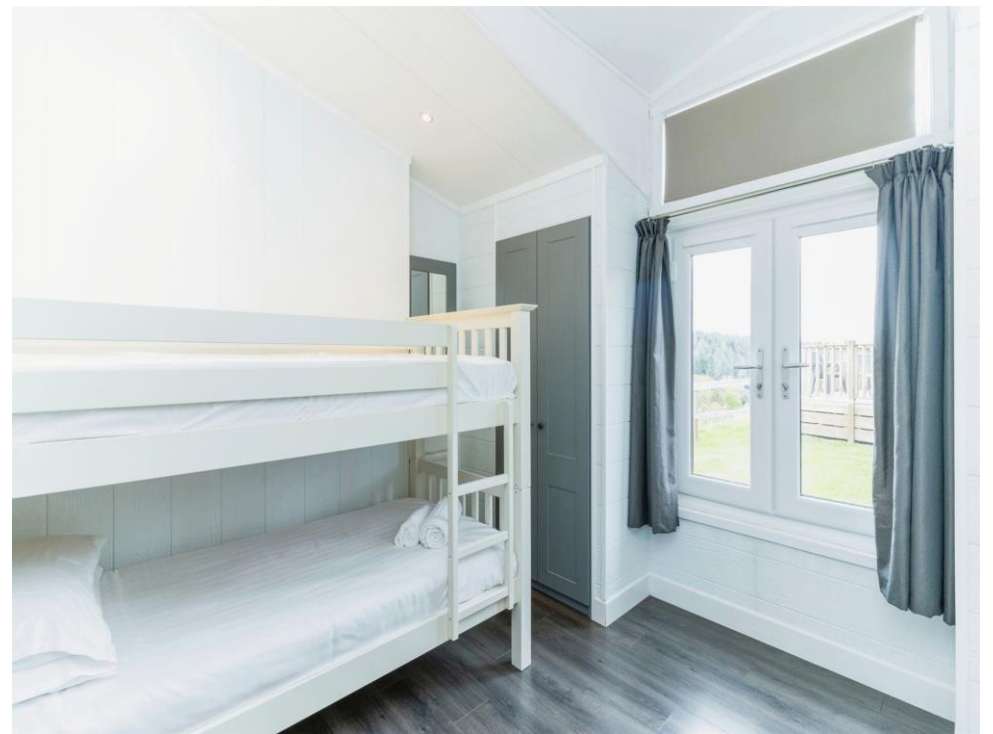
Brand new extended decking area surrounding the lodge with unrestricted woodland views, hot tub with steps, garden furniture, outside tap and lights.

About Finlake Resort & Spa

Finlake is a "Multi Award Winning" resort set within 130 acres of woodland in rolling Devon countryside. The on-site facilities are excellent including a recent £6 million Swimming & Gym facility. There is also an outdoor pool together with a Sauna & Spa.

There are 3 restaurants/cafes on site plus a superbly laid out and well-stocked shop. There are tennis courts, a children's play area plus numerous other facilities including walking trails, biking trails, and horse riding.









This floor plan is for illustrative purposes only. It is not drawn to scale. Any measurements, floor areas (including any total floor area), openings and orientation are approximate. No details are guaranteed, they cannot be relied upon for any purpose and they do not form part of any agreement. No liability is taken for any error, omission or misstatement. A party must rely upon its own inspection(s). Powered by www.focalagent.com

To view this property please contact Connells on

T 01626 365 064
E newtonabbot@connells.co.uk

4 Bank Street
NEWTON ABBOT TQ12 2JW

EPC Rating: Exempt

Tenure: Leasehold

view this property online connells.co.uk/Property/NAB312222

This is a Leasehold property. We are awaiting further details about the Term of the lease. For further information please contact the branch. Please note additional fees could be incurred for items such as Leasehold packs.



1. MONEY LAUNDERING REGULATIONS Intending purchasers will be asked to produce identification documentation at a later stage and we would ask for your co-operation in order that there will be no delay in agreeing the sale. 2. These particulars do not constitute part or all of an offer or contract. 3. The measurements indicated are supplied for guidance only and as such must be considered incorrect. Potential buyers are advised to recheck measurements before committing to any expense. 4. We have not tested any apparatus, equipment, fixtures, fittings or services and it is in the buyers interest to check the working condition of any appliances.

Connells Residential is registered in England and Wales under company number 1489613, Registered Office is Cumbria House, 16-20 Hockliffe Street, Leighton Buzzard, Bedfordshire, LU7 1GN. VAT Registration Number is 500 2481 05.

See all our properties at www.connells.co.uk | www.rightmove.co.uk | www.zoopla.co.uk

Property Ref: NAB312222 - 0011