



Connells

Lantern Hall Pitt House
Chudleigh Newton Abbot



Property Description

Nestled in the picturesque landscape of Chudleigh, Lantern Hall at Pitt House stands as a testament to architectural grandeur and historical significance. This impressive freehold home, part of a Grade 2* listed former country house, boasts a rich tapestry of original features and details that hark back to its 1840s origins, designed by the renowned architect Sir George Gilbert Scott in partnership with William B. Moffatt.

Lantern Hall is named after the large lantern light that adorns its living room, is a substantial property formed from the original billiard room and part of the ballroom, as well as several service rooms added by Charles Seale-Hayne.

The accommodation extends to over 2,000 sq ft, offering 3/4 bedrooms (1 en-suite), a spacious lounge/dining room, a kitchen/breakfast room, a mezzanine snug/bedroom 4, a library, family bathroom and a utility room. Spread over two floors, plus a mezzanine.

The property is surrounded by park-like grounds, partly divided among the freehold houses for private use, with the remainder serving as communal grounds for the apartments.

The owners of Lantern Hall also have the option to enjoy use of these communal grounds if they contribute towards the maintenance costs.

With its rich history, generous living space, and beautiful surroundings, Lantern Hall is not just a home but a piece of history waiting to be cherished by its new owners.

Front Of The Property

Wrought iron balustrade and steps leading up to the stunning oak panelled doors which lead into the main hallway.

Entrance Hallway

Ample space for coats and shoes and a wall mounted radiator.

Downstairs Cloakroom

WC, wash hand basin with solid wooden flooring.

Kitchen / Breakfast Room

20' 8" x 10' 7" (6.30m x 3.23m)
Part of the old ballroom but still retaining many original features with dual aspect windows to the front and side of the property with the main window being stone mullion and transom with zinc framework and diamond glazed panels. There are also two family crests situated in the window which are thought to be those of Seale-Hayne and Pinsent.

Wall and base units with oak worktops, electric hob with extractor over and electric oven below, one and a half bowl stainless steel sink/drainer with, space for dishwasher, space for fridge freezer, original hardwood floor and a wall mounted radiator.

Lounge / Dining Room

26' 6" x 20' 4" (8.08m x 6.20m)

Double height Oak panelled doors lead you into the impressive lounge/dining room which formed part of the original billiard room in the 1880's. This unique room features decorative floor tiles, a fireplace with carved wooden mantle, triple aspect stone mullion and transom windows with the incredible lantern light and wooden coffered ceiling situated above, with individually carved finials.

What would have previously been an entrance, has been cleverly transformed into a drinks cabinet with Oak doors.

There are a total of 4 radiators and a multifuel burner to heat the heart of this brilliant home.

Mezzanine

16' 3" x 15' 8" (4.95m x 4.78m)
The mezzanine, which can also be used as bedroom four, with solid wood flooring, built in storage cupboards with window to the side, with 2 wall mounted radiators. The wooden coffered ceiling is unique with each individual finial being individually carved. Loft access is accessible from this area.

Lower Ground Floor

Library

Original stone archway and brick ceiling leading to the study area with a wooden door leading you to the neighbouring courtyard.

Bedroom One

16' 1" x 13' 6" (4.90m x 4.11m)
Original stone archway and arched ceiling leads you into the generous size main bedroom with large window that provides ample natural light, walk in wardrobe and 2 wall mounted radiators.

Ensuite

Obscure window, shower cubicle, WC and wash hand basin and a wall mounted radiator.

Bedroom Two

10' x 8' 6" (3.05m x 2.59m)
Window to the front of the property and a wall mounted radiator.

Bedroom Three

11' 8" x 8' 6" (3.56m x 2.59m)
Window to the side with original shutters and ironmongery and a wall mounted radiator.

Family Bathroom

Recently refurbished bathroom - bath with shower over and mixer taps, WC, wash hand basin and a wall mounted chrome heated towel rail. Door leading to..

Utility Room

Plumbing for washing machine and tumble dryer.

Outside

The private garden area is located opposite the steps to the front door. The garden is a generous size which is laid to lawn with mature trees surrounding. The bin storage is located on the gravelled parking area.

Garages

16' 9" x 8' 5" (5.11m x 2.57m)
Just off the main driveway there are two garages which are located in adjacent blocks with an additional parking space near by. Both garages have up and over doors to the front.

Agent Notes

Pitt House is surrounded by park-like grounds, partly divided among the freehold houses for their private use, with the remainder to the front of the house used as communal grounds by the apartments who contribute to their maintenance. The owners of Lantern Hall could also enjoy the use of the communal grounds if they contribute towards the maintenance costs.

Grade 2* list entry number: 1165950

Part of the Lounge is subject to a Flying Freehold - A block indemnity policy is currently in place.

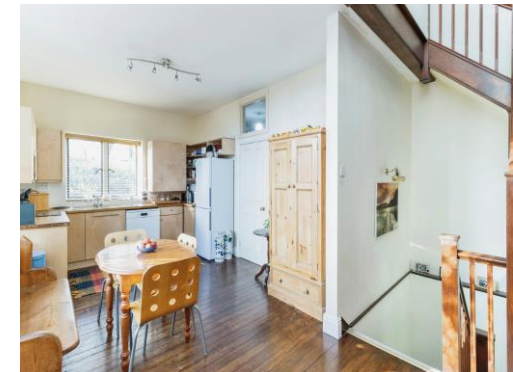
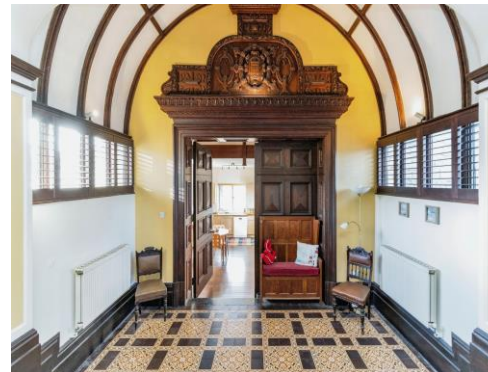
There is a covenant in place that states the property is only to be used and occupied as a private residence.

The owners of Lantern Hall are required to contribute to the upkeep of the driveway and septic tank which they enjoy the use of. This is on an 'as required' basis.

There is a blanket Tree Preservations Order which covers the garden.

History Of Lantern Hall

The property forms part of Pitt House, designed and built in the 1840's by the renowned London Architect Sir George Gilbert Scott in Partnership with William B. Moffatt. Sir Gilbert Scott being responsible for many iconic buildings such as St Pancreas Hotel and Train Station, and the Prince Albert Memorial. Pitt House is described as being of immense architectural and historic interest as one of the few remaining examples of a domestic building by Sir Gilbert Scott, and as an example of the early Victorian Jacobean revival style. Constructed of Devon squared



stone with Bathstone dressings the house is almost symmetrical in design and features curly Dutch gables and castellated bay oriel windows. Pitt House was extended to the rear in the 1880's whilst in the ownership of Charles Seale-Hayne including the addition of a billiard room and ballroom as well as several service rooms. During the Second World War the American military used Pitt House, and then it saw use as a boy's boarding school for a period of time prior to the conversion in the 1980's. In the mid 1980's much restoration work was carried out and the mansion was split into the current layout of three large houses and six apartments.







This floor plan is for illustrative purposes only. It is not drawn to scale. Any measurements, floor areas (including any total floor area), openings and orientation are approximate. No details are guaranteed, they cannot be relied upon for any purpose and they do not form part of any agreement. No liability is taken for any error, omission or misstatement. A party must rely upon its own inspection(s). Powered by www.focalagent.com

To view this property please contact Connells on

T 01626 365 064
E newtonabbot@connells.co.uk

4 Bank Street
 NEWTON ABBOT TQ12 2JW

EPC Rating: Exempt

Tenure: Freehold

view this property online connells.co.uk/Property/NAB312200



1. MONEY LAUNDERING REGULATIONS Intending purchasers will be asked to produce identification documentation at a later stage and we would ask for your co-operation in order that there will be no delay in agreeing the sale. 2. These particulars do not constitute part or all of an offer or contract. 3. The measurements indicated are supplied for guidance only and as such must be considered incorrect. Potential buyers are advised to recheck measurements before committing to any expense. 4. We have not tested any apparatus, equipment, fixtures, fittings or services and it is in the buyers interest to check the working condition of any appliances.

Connells Residential is registered in England and Wales under company number 1489613, Registered Office is Cumbria House, 16-20 Hockliffe Street, Leighton Buzzard, Bedfordshire, LU7 1GN. VAT Registration Number is 500 2481 05.

See all our properties at www.connells.co.uk | www.rightmove.co.uk | www.zoopla.co.uk

Property Ref: NAB312200 - 0010