



Connells

Spiral Court Monks Kirby Road
Sutton Coldfield



Property Description

A well presented two double bedrooms, second floor apartment, located in a popular location, close to local amenities, main road transport links and close good school catchment areas. The apartment block benefits from having heating and hot water included within the service charge. The apartment itself offers an entrance hallway with rooms going off to the lounge diner, which has double glazed picture window, two bedrooms, bathroom and built-in storage cupboard and is finished to a high standard. The property benefits from having communal gardens and communal parking.

Entrance

Being a secure fob entry system, giving access into the main reception hallway, stairs lead to the second floor landing, door gives access into the main accommodation.

Private Hallway

Having doors off to the lounge, diner, two bedrooms, the bathroom and built-in storage cupboard.

Lounge Diner

Having a double glazed picture window, radiator to wall, TV aerial point, laminate effect flooring and doorway gives access into the modern refitted kitchen.

Modern Refitted Kitchen

Briefly comprising a modern refitted kitchen, having fitted base units with work surfaces over and fitted matching wall units, decorative splash back tiling, integrated sink with mixer tap over, integrated electric oven and electric hob, built-in electric microwave, cooker hood with extractor fan, space for a fridge freezer, space and plumbing for a washing machine and tiled effect flooring.

Bedroom One

Having double glazed window and radiator to wall.

Bedroom Two

Having double glazed window and built-in wardrobe.

Bedroom

A modern refitted bathroom, having panelled pea-shaped bath with electric shower over the bath, wall mounted wash hand basin with built-in cupboard under, low level flush WC, floor tiling and tiling to walls.

Outside

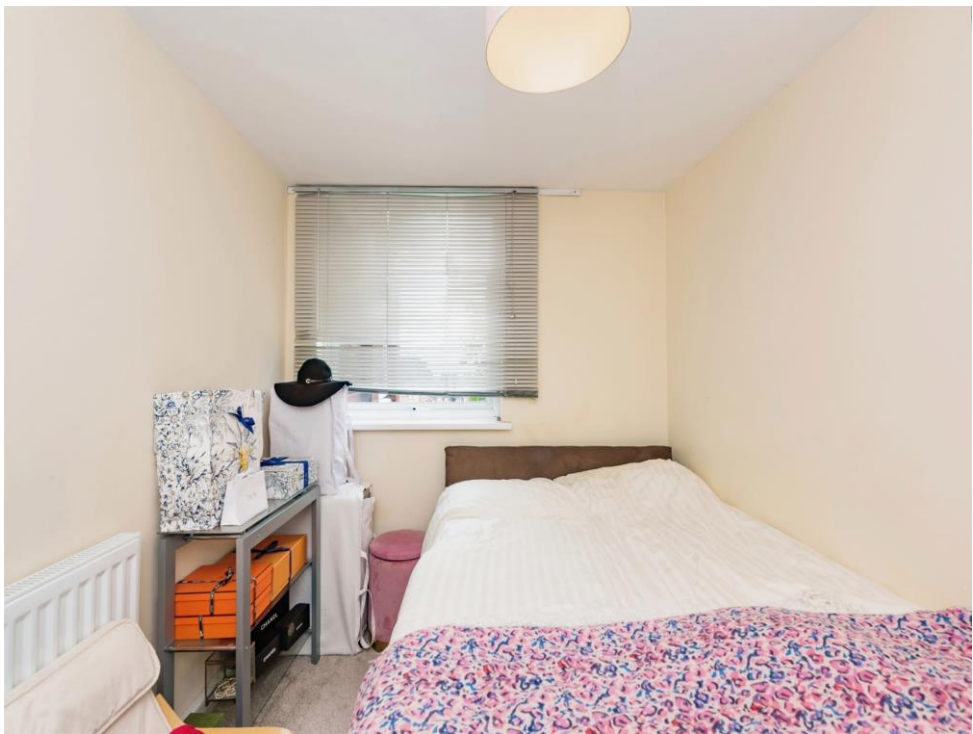
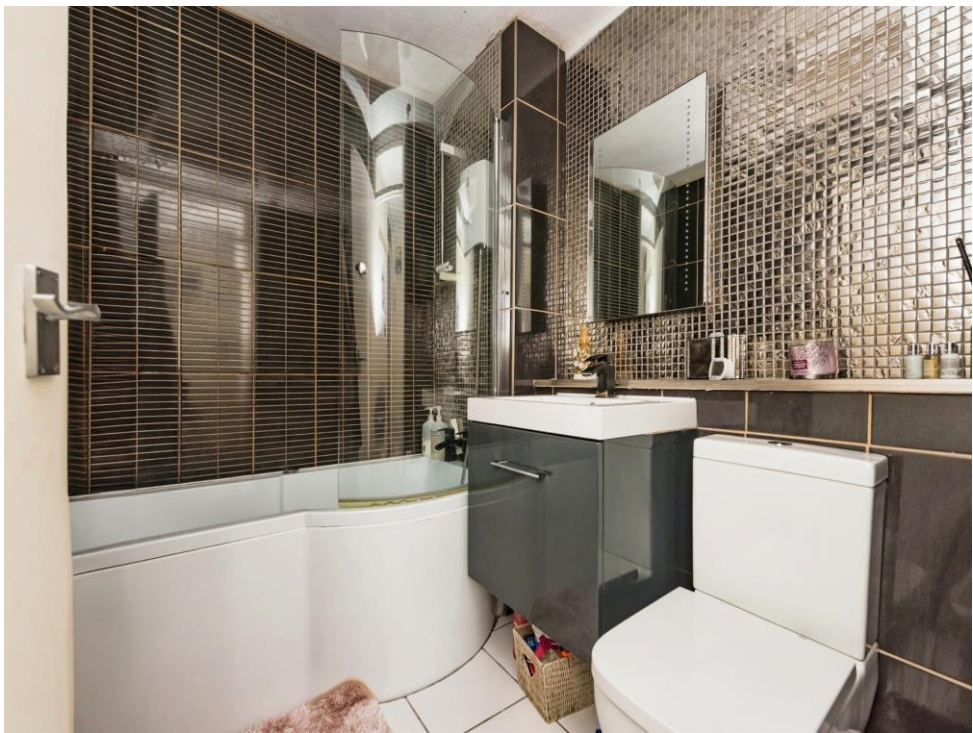
Communal Gardens

Having gardens laid to lawn.

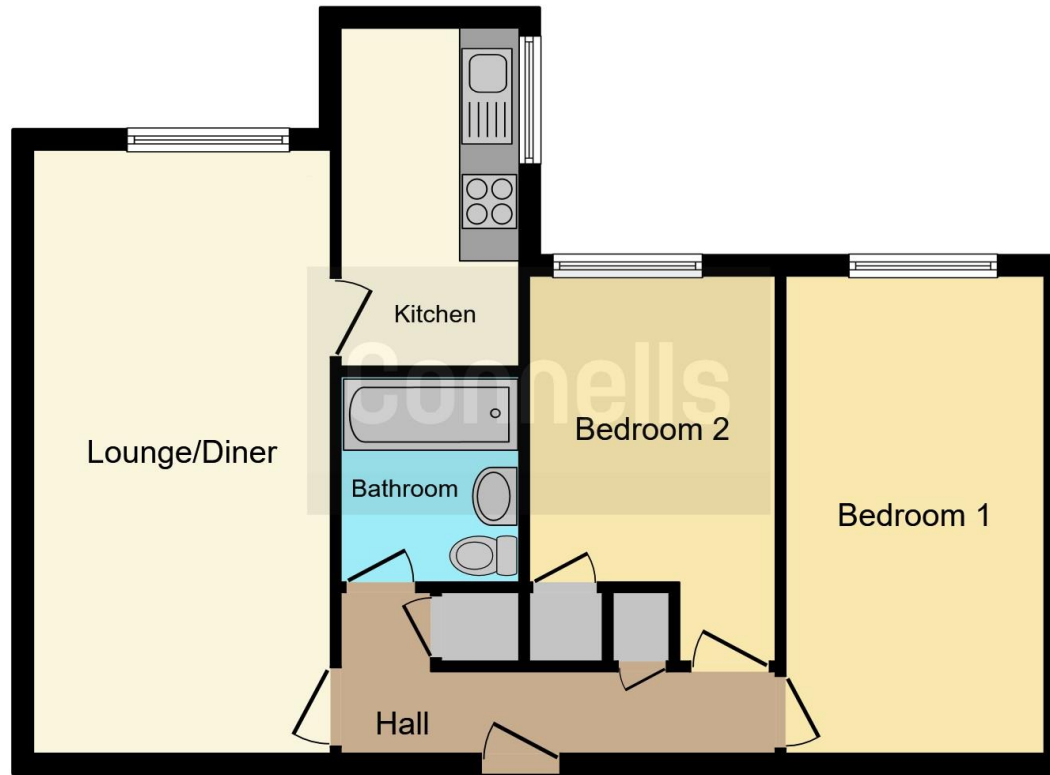
Communal Parking

The property benefits from communal parking.









This floor plan is for illustrative purposes only. It is not drawn to scale. Any measurements, floor areas (including any total floor area), openings and orientation are approximate. No details are guaranteed, they cannot be relied upon for any purpose and they do not form part of any agreement. No liability is taken for any error, omission or misstatement. A party must rely upon its own inspection(s). Powered by www.focalagent.com

To view this property please contact Connells on

T 0121 354 4481
E suttoncoldfield@connells.co.uk

4/6 High Street
SUTTON COLDFIELD B72 1XA

EPC Rating: D

Tenure: Leasehold

view this property online connells.co.uk/Property/SCO310314

This is a Leasehold property with details as follows; Term of Lease 125 years from 16 Jul 2019. Should you require further information please contact the branch. Please Note additional fees could be incurred for items such as



1. MONEY LAUNDERING REGULATIONS Intending purchasers will be asked to produce identification documentation at a later stage and we would ask for your co-operation in order that there will be no delay in agreeing the sale. 2. These particulars do not constitute part or all of an offer or contract. 3. The measurements indicated are supplied for guidance only and as such must be considered incorrect. Potential buyers are advised to recheck measurements before committing to any expense. 4. We have not tested any apparatus, equipment, fixtures, fittings or services and it is in the buyers interest to check the working condition of any appliances.

Connells Residential is registered in England and Wales under company number 1489613, Registered Office is Cumbria House, 16-20 Hockliffe Street, Leighton Buzzard, Bedfordshire, LU7 1GN. VAT Registration Number is 500 2481 05.

See all our properties at www.connells.co.uk | www.rightmove.co.uk | www.zoopla.co.uk

Property Ref: SCO310314 - 0004