



Connells

Stockland Road
Birmingham



Property Description

An immaculately presented 2 bedroom Victorian mid-terraced home, located in a cul-de-sac, close to main road, motorway and transport links. Offered with NO UPWARD CHAIN. Having lounge and separate dining room, good sized and well presented fitted kitchen with some built in appliances, 2 excellent sized double bedrooms and family bathroom with bath and shower. Along with a good sized rear garden.

Entrance Door

Having door giving direct access to the Lounge.

Lounge

14' 3" includes bay x 11' 8" max (4.34m includes bay x 3.56m max)

Having single glazed walk in bay window to the front, radiator, telephone point, 2 built in store cupboards housing the gas and electric meters, doorway gives access into an inner hallway.

Inner Hallway

Having storage area and access to a dining room/rear reception room.

Dining Room/Rear Reception

13' 4" max x 11' 8" (4.06m max x 3.56m)

Having double glazed window to the rear, radiator, door to the stairs which lead to the first floor landing and door gives access to the Kitchen.

Fitted Kitchen

12' 8" x 6' 8" (3.86m x 2.03m)

A well presented modern fitted kitchen with fitted base units with work surfaces over, sink and drainer unit with mixer tap over and cupboards under, splashback tiling, integrated electric oven, integrated gas hob with cooker hood with extractor over, space and plumbing for a washing machine, integrated fridge and freezer, radiator to wall, 2 double glazed windows to the side and a double glazed window to the rear, door gives access to the rear garden.

First Floor Landing

Having doors to the 2 bedrooms and family bathroom

Bedroom 1

13' 9" max x 11' 10" (4.19m max x 3.61m)

Having window to the front and radiator to the wall.

Bedroom 2

12' 2" x 10' 7" max (3.71m x 3.23m max)

Having double glazed window to the rear, radiator, built in storage cupboard with hanging rail and shelving.

Bathroom

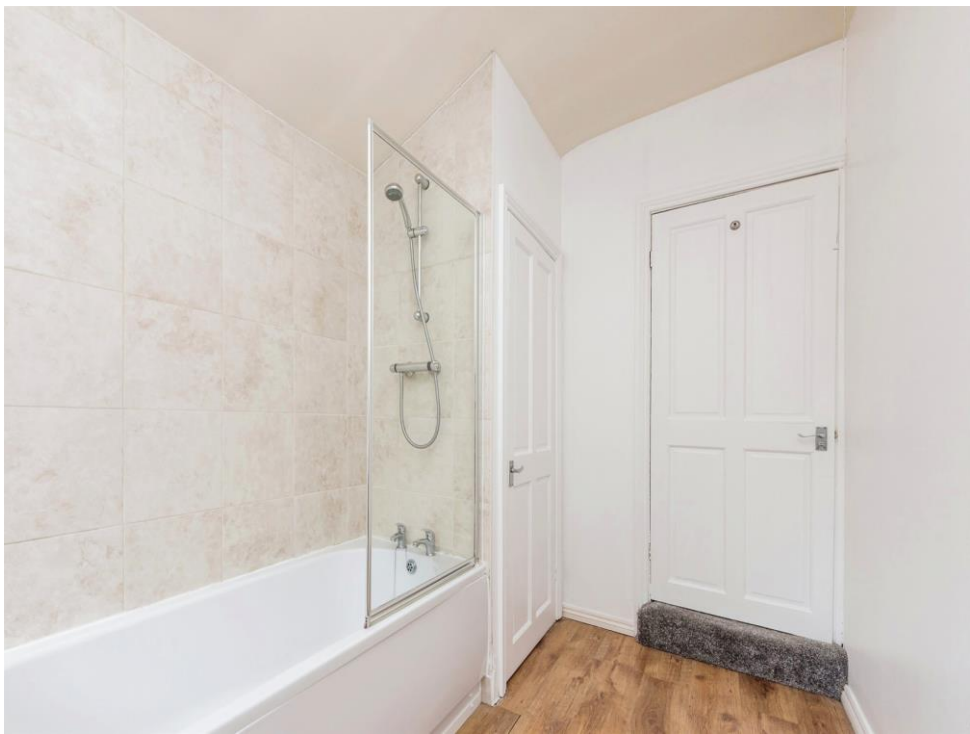
Comprising a bathroom suite with paneled bath with mixer shower over, low level flush WC, wash hand basin, radiator, laminate floor, cupboard to wall housing wall mounted central heating boiler, part tiling to wall and frosted double glazed window.

Outside

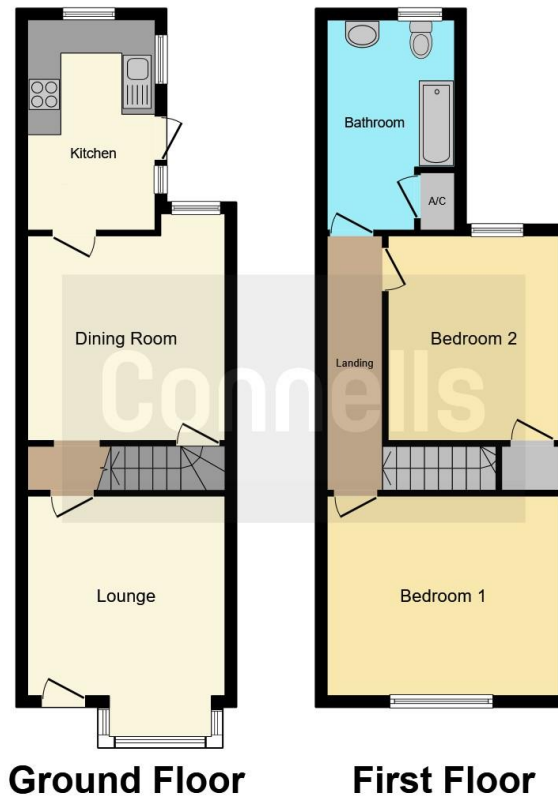
Rear Garden

Having garden laid to lawn. patio area and fencing.









This floor plan is for illustrative purposes only. It is not drawn to scale. Any measurements, floor areas (including any total floor area), openings and orientation are approximate. No details are guaranteed, they cannot be relied upon for any purpose and they do not form part of any agreement. No liability is taken for any error, omission or misstatement. A party must rely upon its own inspection(s). Powered by www.focalagent.com

To view this property please contact Connells on

T 0121 354 4481
E suttoncoldfield@connells.co.uk

4/6 High Street
 SUTTON COLDFIELD B72 1XA

EPC Rating: E

Tenure: Freehold

view this property online connells.co.uk/Property/SCO310170



1. MONEY LAUNDERING REGULATIONS Intending purchasers will be asked to produce identification documentation at a later stage and we would ask for your co-operation in order that there will be no delay in agreeing the sale. 2. These particulars do not constitute part or all of an offer or contract. 3. The measurements indicated are supplied for guidance only and as such must be considered incorrect. Potential buyers are advised to recheck measurements before committing to any expense. 4. We have not tested any apparatus, equipment, fixtures, fittings or services and it is in the buyers interest to check the working condition of any appliances.

Connells Residential is registered in England and Wales under company number 1489613, Registered Office is Cumbria House, 16-20 Hockliffe Street, Leighton Buzzard, Bedfordshire, LU7 1GN. VAT Registration Number is 500 2481 05.

See all our properties at www.connells.co.uk | www.rightmove.co.uk | www.zoopla.co.uk

Property Ref: SCO310170 - 0006