





Property Description

A three bedroom semi detached family home situated in the popular residential area of Handsworth Wood briefly comprising of porch entrance, entrance hallway, living room, dining room, kitchen, garage, three bedrooms, wc and a wet room to the first floor, off road parking to the front, rear gardens, the property benefits from central heating and double glazing (where specified)

Window to rear double glazed, One ceiling light, One single radiator

Bathroom

6' 1" x 5' 3" (1.85m x 1.60m)

Window to rear double glazed, Cladding, WC bath

Entrance

Lounge

26' 4" x 13' 6" (8.03m x 4.11m)

Door to garden, Gas fire, Ceiling light, Two single radiators

Kitchen

10' x 9' 3" (3.05m x 2.82m)

Ceiling light, Fitted kitchen

Bedroom One

10' x 10' 3" (3.05m x 3.12m)

Window to front double glazed, One single radiator, One ceiling light

Bedroom Two

13' 3" x 11' 8" (4.04m x 3.56m)

Window to rear double glazed, One single radiator

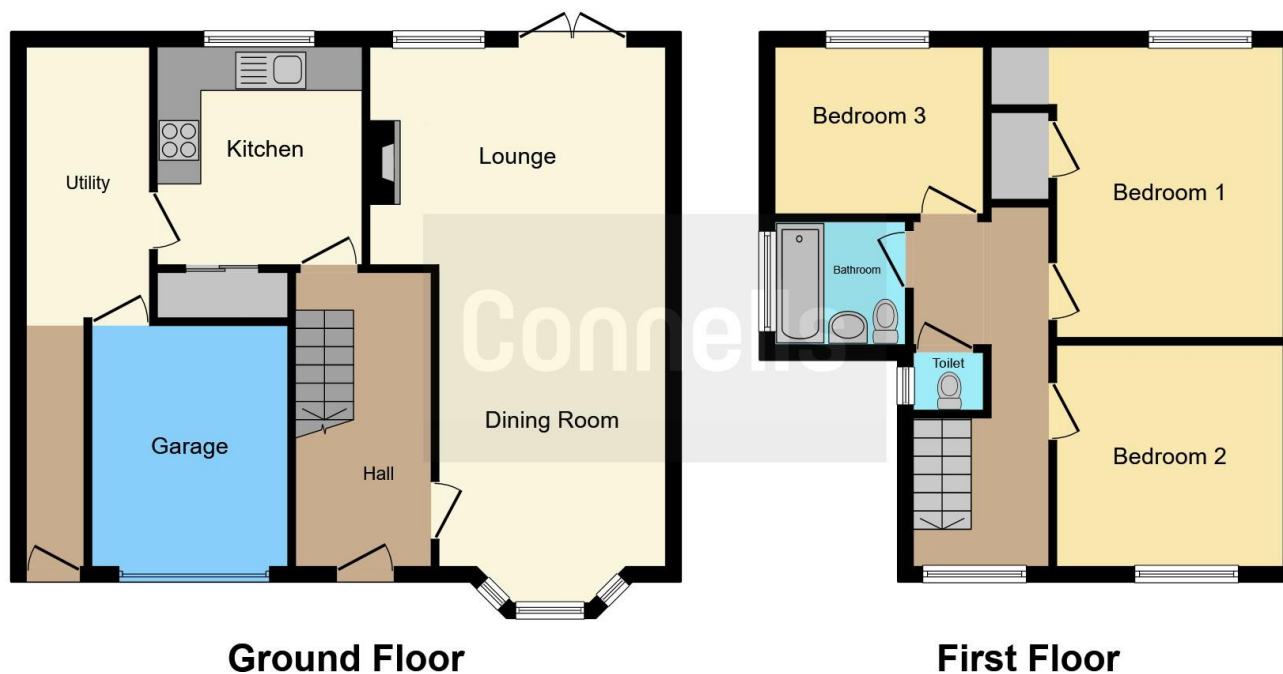
Bedroom Three

11' 4" x 7' 6" (3.45m x 2.29m)









This floor plan is for illustrative purposes only. It is not drawn to scale. Any measurements, floor areas (including any total floor area), openings and orientation are approximate. No details are guaranteed, they cannot be relied upon for any purpose and they do not form part of any agreement. No liability is taken for any error, omission or misstatement. A party must rely upon its own inspection(s). Powered by www.focalagent.com

To view this property please contact Connells on

T 0121 357 6877
E greatbarr@connells.co.uk

907 Walsall Road Great Barr
 BIRMINGHAM B42 1TN

EPC Rating: C

Tenure: Freehold

view this property online connells.co.uk/Property/GBR311832



1. MONEY LAUNDERING REGULATIONS Intending purchasers will be asked to produce identification documentation at a later stage and we would ask for your co-operation in order that there will be no delay in agreeing the sale. 2. These particulars do not constitute part or all of an offer or contract. 3. The measurements indicated are supplied for guidance only and as such must be considered incorrect. Potential buyers are advised to recheck measurements before committing to any expense. 4. We have not tested any apparatus, equipment, fixtures, fittings or services and it is in the buyers interest to check the working condition of any appliances.

Connells Residential is registered in England and Wales under company number 1489613, Registered Office is Cumbria House, 16-20 Hockliffe Street, Leighton Buzzard, Bedfordshire, LU7 1GN. VAT Registration Number is 500 2481 05.

See all our properties at www.connells.co.uk | www.rightmove.co.uk | www.zoopla.co.uk

Property Ref: GBR311832 - 0003