



Connells

Camp Lane
Handsworth Birmingham

Camp Lane Handsworth Birmingham B21 8JE

for sale offers over
£330,000



Property Description

An exceptionally spacious, well presented and extended Four Bedroom Semi Detached Family Home in this sought after residential area. This family home has been extended to provide additional living space with a Bedroom and En- Suite to the Ground Floor which is great for buyers with mobility problems. The Kitchen has also been extended and the Driveway provides parking for several vehicles

Family Bathroom

8' x 5' 5" (2.44m x 1.65m)

Porch

Entrance Hall

Lounge Diner

24' 7" x 10' 8" (7.49m x 3.25m)

Ground Floor Bedroom

12' 6" x 7' 7" (3.81m x 2.31m)

En-Suite

9' 5" x 5' 9" (2.87m x 1.75m)

Kitchen Diner

17' 4" x 19' 8" (5.28m x 5.99m)

L Shaped Room

Utility Room

7' 8" x 6' 7" (2.34m x 2.01m)

Bedroom Two

13' 3" x 10' 3" (4.04m x 3.12m)

Bedroom Three

8' x 7' 4" (2.44m x 2.24m)

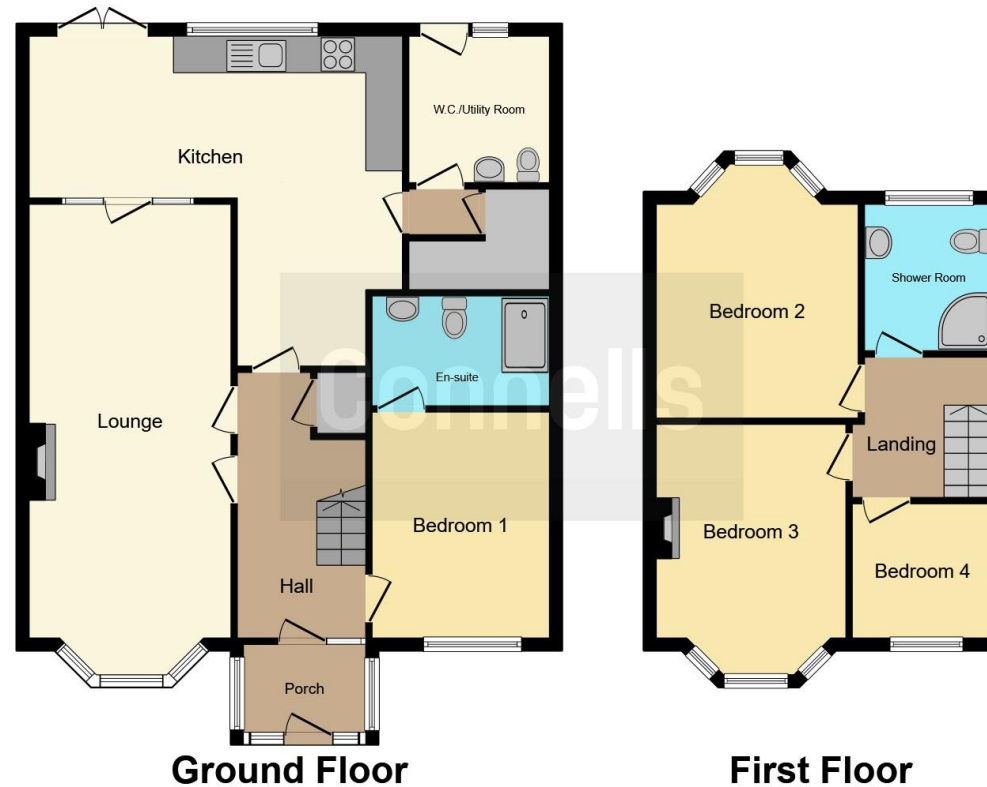
Bedroom Four

13' 9" x 10' 8" (4.19m x 3.25m)









This floor plan is for illustrative purposes only. It is not drawn to scale. Any measurements, floor areas (including any total floor area), openings and orientation are approximate. No details are guaranteed, they cannot be relied upon for any purpose and they do not form part of any agreement. No liability is taken for any error, omission or misstatement. A party must rely upon its own inspection(s). Powered by www.focalagent.com

To view this property please contact Connells on

T 0121 357 6877
E greatbarr@connells.co.uk

907 Walsall Road Great Barr
 BIRMINGHAM B42 1TN

EPC Rating: C

Tenure: Freehold

view this property online connells.co.uk/Property/GBR311435



1. MONEY LAUNDERING REGULATIONS Intending purchasers will be asked to produce identification documentation at a later stage and we would ask for your co-operation in order that there will be no delay in agreeing the sale. 2. These particulars do not constitute part or all of an offer or contract. 3. The measurements indicated are supplied for guidance only and as such must be considered incorrect. Potential buyers are advised to recheck measurements before committing to any expense. 4. We have not tested any apparatus, equipment, fixtures, fittings or services and it is in the buyers interest to check the working condition of any appliances.

Connells Residential is registered in England and Wales under company number 1489613, Registered Office is Cumbria House, 16-20 Hockliffe Street, Leighton Buzzard, Bedfordshire, LU7 1GN. VAT Registration Number is 500 2481 05.

See all our properties at www.connells.co.uk | www.rightmove.co.uk | www.zoopla.co.uk

Property Ref: GBR311435 - 0007