



Connells

Greenridge Road  
Birmingham



## Property Description

Located in the ever popular Handsworth Wood area of Birmingham, this traditional style bay fronted 1930's idyllic family home has all the average family could need. Offering a modern interior, with a modern bathroom suite and fitted Grey gloss kitchen with several integral appliances, the house is ready to move straight into. The property briefly comprises of an entrance hallway, lounge, modern fitted kitchen-diner, downstairs guest wc, first floor landing, three good sized bedrooms, family bathroom, central heating and both front & rear gardens.

**\*\*STUNNING FAMILY HOME WITH A MYRIAD OF EXTERNAL POTENTIAL\*\* \*\*AN ABSOLUTE MUST VISIT TO BE FULLY APPRECIATED\*\***

To the front aspect is a pleasant garden (lots of properties on Greenridge Road have converted their front garden into large driveways, so worth looking into in), and to the rear is a large tiered garden with patio and outbuildings, again, we feel this is absolutely ready for the new owner to play with and develop subject to planning permission of course. **\*\*CALL CONNELLS GREAT BARR TODAY TO BOOK YOUR SLOT\*\***

## Entrance Hallway

## Lounge

12' 8" x 12' 1" into bay ( 3.86m x 3.68m into bay )

## Kitchen - Dining Room

14' 8" x 19' 5" ( 4.47m x 5.92m )

## Guest Wc

## First Floor Landing

## Bedroom One

11' 1" x 15' 1" ( 3.38m x 4.60m )

## Bedroom Two

12' 11" x 12' 6" ( 3.94m x 3.81m )

## Bedroom Three

8' 1" max x 9' 6" max ( 2.46m max x 2.90m max )

## Modern Family Bathroom

## Beautiful Front Garden

## Plentiful Rear Garden

## Much Potential For Expansion

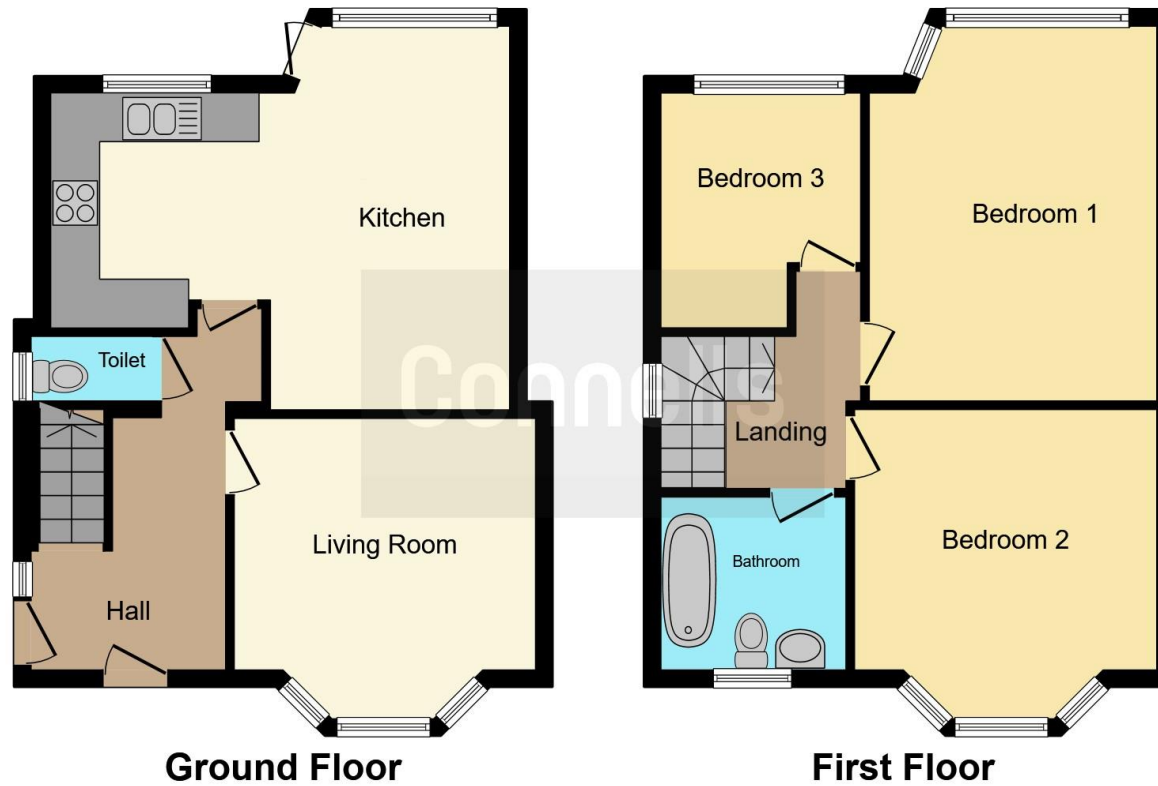
## Sure To Be Very Popular

## Call Connells Today









This floor plan is for illustrative purposes only. It is not drawn to scale. Any measurements, floor areas (including any total floor area), openings and orientation are approximate. No details are guaranteed, they cannot be relied upon for any purpose and they do not form part of any agreement. No liability is taken for any error, omission or misstatement. A party must rely upon its own inspection(s). Powered by [www.focalagent.com](http://www.focalagent.com)

To view this property please contact Connells on

**T 0121 357 6877**  
**E [greatbarr@connells.co.uk](mailto:greatbarr@connells.co.uk)**

907 Walsall Road Great Barr  
 BIRMINGHAM B42 1TN

**EPC Rating: D**

**view this property online [connells.co.uk/Property/GBR310890](http://connells.co.uk/Property/GBR310890)**

Tenure: Freehold



1. MONEY LAUNDERING REGULATIONS Intending purchasers will be asked to produce identification documentation at a later stage and we would ask for your co-operation in order that there will be no delay in agreeing the sale. 2. These particulars do not constitute part or all of an offer or contract. 3. The measurements indicated are supplied for guidance only and as such must be considered incorrect. Potential buyers are advised to recheck measurements before committing to any expense. 4. We have not tested any apparatus, equipment, fixtures, fittings or services and it is in the buyers interest to check the working condition of any appliances.

Connells Residential is registered in England and Wales under company number 1489613, Registered Office is Cumbria House, 16-20 Hockliffe Street, Leighton Buzzard, Bedfordshire, LU7 1GN. VAT Registration Number is 500 2481 05.

**See all our properties at [www.connells.co.uk](http://www.connells.co.uk) | [www.rightmove.co.uk](http://www.rightmove.co.uk) | [www.zoopla.co.uk](http://www.zoopla.co.uk)**

Property Ref: GBR310890 - 0007