



Connells

Hamstead Road
Handsworth BIRMINGHAM



Property Description

****A SUPERB OPPORTUNITY TO OWN A PRIVATE AND ABSOLUTELY UNIQUE GRADE 2 LISTED FOUR BEDROOM HOME IN A POPULAR AREA OF NORTH BIRMINGHAM****

Connells Great Barr are just thrilled to offer for sale this exceptional family home located in a very popular area of Handsworth. Nearby we have a host of excellent schools, places of worship, shops, supermarkets, restaurants and easy access around the city via our super transport links.

Internally the property boasts a wealth of period features and a huge amount of spaciousness. We have a storm porch entrance with hallway, lounge, kitchen dining room, a cellar bedroom with en-suite, three further double bedrooms to the first floor along with a very modern bathroom. Externally we have a real treat, the property is located off the Hamstead Road through a private and rather hidden entrance leading to a driveway for many vehicles. The rear garden is private gated and itself offers huge privacy along with a very old exciting outbuilding with functioning Wc, real potential here for expansion, subject to planning permission of course.

Hamstead Road is a vibrant part of Handsworth that links Handsworth Wood with Birmingham City Centre. We can offer plenty of local shops, independent stores and eateries on the doorstep along with parks, golf clubs and leisure facilities. Hamstead

Train Station is nearby as well as the M6 and other road links.

****UNIQUE FAMILY HOME** **BEAUTIFULLY PERIOD, WONDERFULLY LARGE** **FOUR BEDROOMS****

Entrance Hallway

Lounge

12' 2" x 14' 1" (3.71m x 4.29m)

Kitchen Diner

12' 9" x 20' 4" (3.89m x 6.20m)

Cellar Room Bedroom

En-Suite Shower Room

First Floor Landing

Bedroom One

12' 1" x 14' 1" (3.68m x 4.29m)

Bedroom Two

9' 2" x 13' 11" (2.79m x 4.24m)

Bedroom Three

9' 6" max x 11' 2" max (2.90m max x 3.40m max)

Modern Family Bathroom

Plentiful Driveway** Private

Pleasant Rear Garden Gated

Brick Outbuilding

External Wc

No Onward Chain

Grade 2 Listed Family Home

A Real Treat

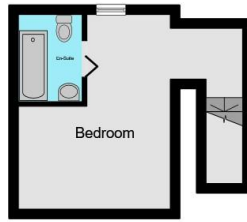
Call Connells Today

Open Day Soon









Cellar



Ground Floor



First Floor



This floorplan is for illustrative purposes only and is not drawn to scale. Measurements, floor-areas, openings and orientations are approximate. They should not be relied upon for any purpose and do not form any part of an agreement. No liability is taken for any error or mis-statement. All parties must rely on their own inspections.

To view this property please contact Connells on

T 0121 357 6877
E greatbarr@connells.co.uk

907 Walsall Road Great Barr
BIRMINGHAM B42 1TN

EPC Rating: D

Tenure: Freehold

view this property online connells.co.uk/Property/GBR310777



1. MONEY LAUNDERING REGULATIONS Intending purchasers will be asked to produce identification documentation at a later stage and we would ask for your co-operation in order that there will be no delay in agreeing the sale. 2. These particulars do not constitute part or all of an offer or contract. 3. The measurements indicated are supplied for guidance only and as such must be considered incorrect. Potential buyers are advised to recheck measurements before committing to any expense. 4. We have not tested any apparatus, equipment, fixtures, fittings or services and it is in the buyers interest to check the working condition of any appliances.

Connells Residential is registered in England and Wales under company number 1489613, Registered Office is Cumbria House, 16-20 Hockliffe Street, Leighton Buzzard, Bedfordshire, LU7 1GN. VAT Registration Number is 500 2481 05.

See all our properties at www.connells.co.uk | www.rightmove.co.uk | www.zoopla.co.uk

Property Ref: GBR310777 - 0003