

for sale

offers in the region of **£360,000**



Woodfield Crescent Ivybridge PL21 0FB

Presenting this detached TWO BEDROOM bungalow in a leafy suburb of Ivybridge. This property comprises of TWO double bedrooms, family sized bathroom, hallway, kitchen, dining room, lounge and conservatory. Rear garden/patio. To the front a mature garden and to the side a driveway and garage

Woodfield Crescent Ivybridge PL21 0FB

Entrance Hall

Doorway to side. Carpet. Radiator.

Lounge

18' 2" x 10' 4" (5.54m x 3.15m)

Bay window to the front. Shutters. Carpet. Radiator. Gas fire place with with mantle.

Dining Room

7' 5" x 8' 10" (2.26m x 2.69m)

Window to the front with shutters. Radiator. Carpet.

Bedroom One

11' 10" x 10' (3.61m x 3.05m)

Window to rear with shutters. Built in wardrobe. Radiator. Carpet.

Bedroom Two

8' 6" x 9' 10" (2.59m x 3.00m)

Bathroom

Low level flush wc. Window to side. Shower over bath. Wash hand basin. Extractor fan. Radiator.

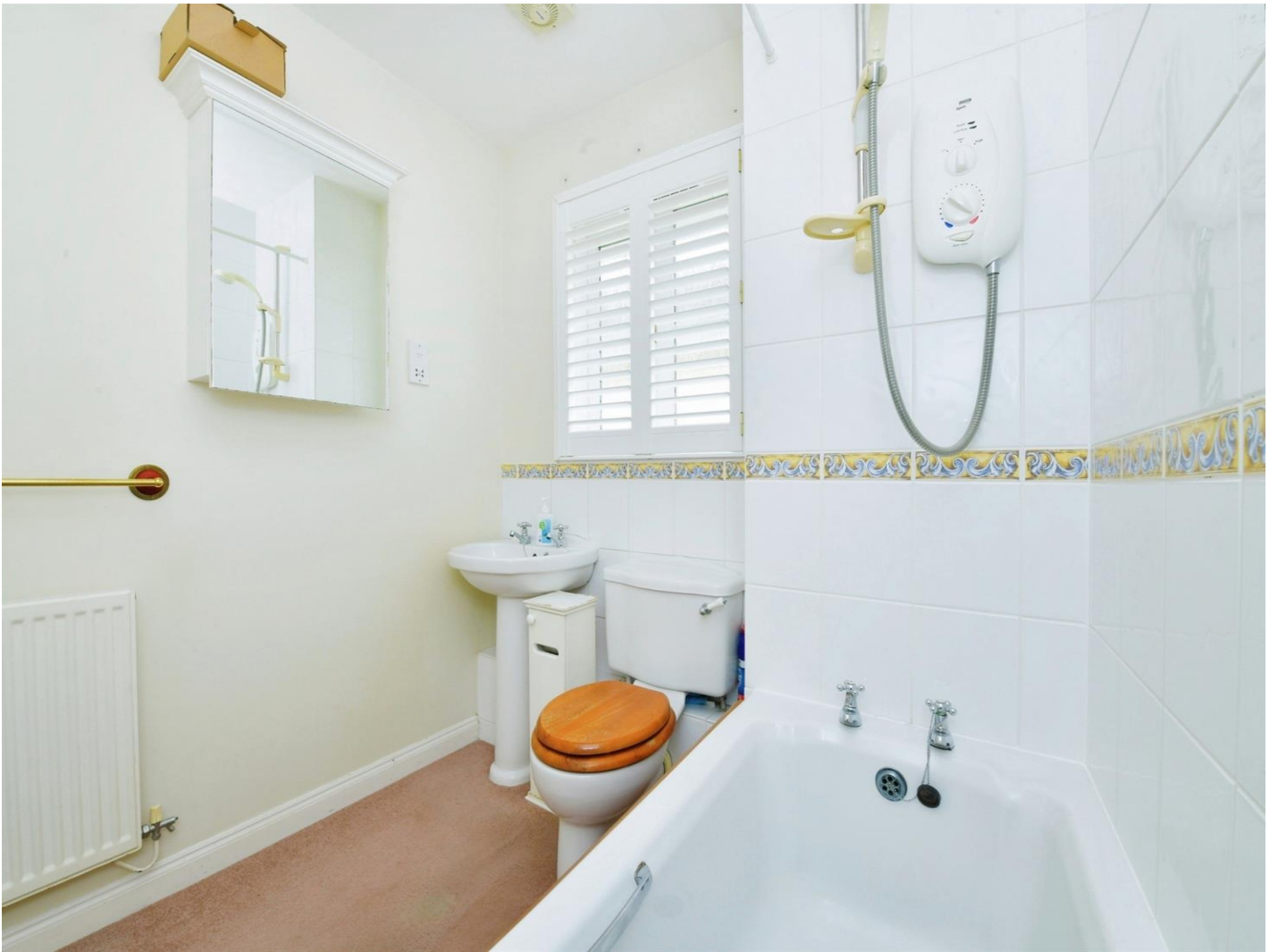
Conservatory

16' 11" x 75' (5.16m x 22.86m)

Side and Rear windows. Door to garden. Radiator. Air conditioning unit. Carpet.









This floor plan is for illustrative purposes only. It is not drawn to scale. Any measurements, floor areas (including any total floor area), openings and orientation are approximate. No details are guaranteed, they cannot be relied upon for any purpose and they do not form part of any agreement. No liability is taken for any error, omission or misstatement. A party must rely upon its own inspection(s). Powered by www.focalagent.com

To view this property please contact Connells on

T 01752 691 200
E ivybridge@connells.co.uk

11 Glanvilles Road Glanvilles Mill
IVYBRIDGE PL21 9PS

Property Ref: IVY306506 - 0005

Tenure: Freehold

EPC Rating: D

view this property online connells.co.uk/Property/IVY306506

1. MONEY LAUNDERING REGULATIONS Intending purchasers will be asked to produce identification documentation at a later stage and we would ask for your co-operation in order that there will be no delay in agreeing the sale. 2. These particulars do not constitute part or all of an offer or contract. 3. The measurements indicated are supplied for guidance only and as such must be considered incorrect. Potential buyers are advised to recheck measurements before committing to any expense. 4. We have not tested any apparatus, equipment, fixtures, fittings or services and it is in the buyers interest to check the working condition of any appliances.

Connells Residential is registered in England and Wales under company number 1489613, Registered Office is Cumbria House, 16-20 Hockliffe Street, Leighton Buzzard, Bedfordshire, LU7 1GN. VAT Registration Number is 500 2481 05.

see all our properties at www.connells.co.uk | www.rightmove.co.uk | www.zoopla.co.uk