

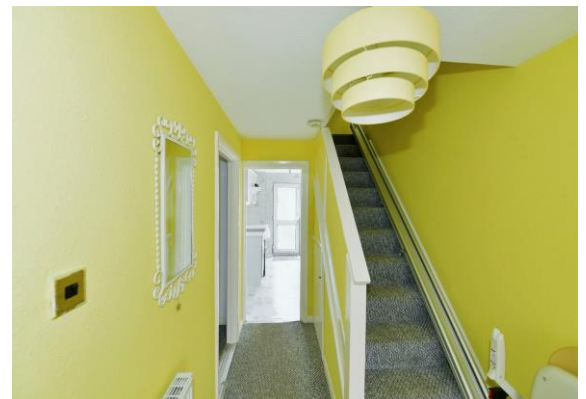
for sale

guide price **£260,000**



## Cleeve Drive Ivybridge PL21 9BP

**\*\*NO ONWARD CHAIN\*\*** SPACIOUS three bedroom family home, with one IMPRESSIVE LARGE garden. Garage, driveway & large storage within the garden, this property is perfect for anyone wishing to put their own stamp on it!!



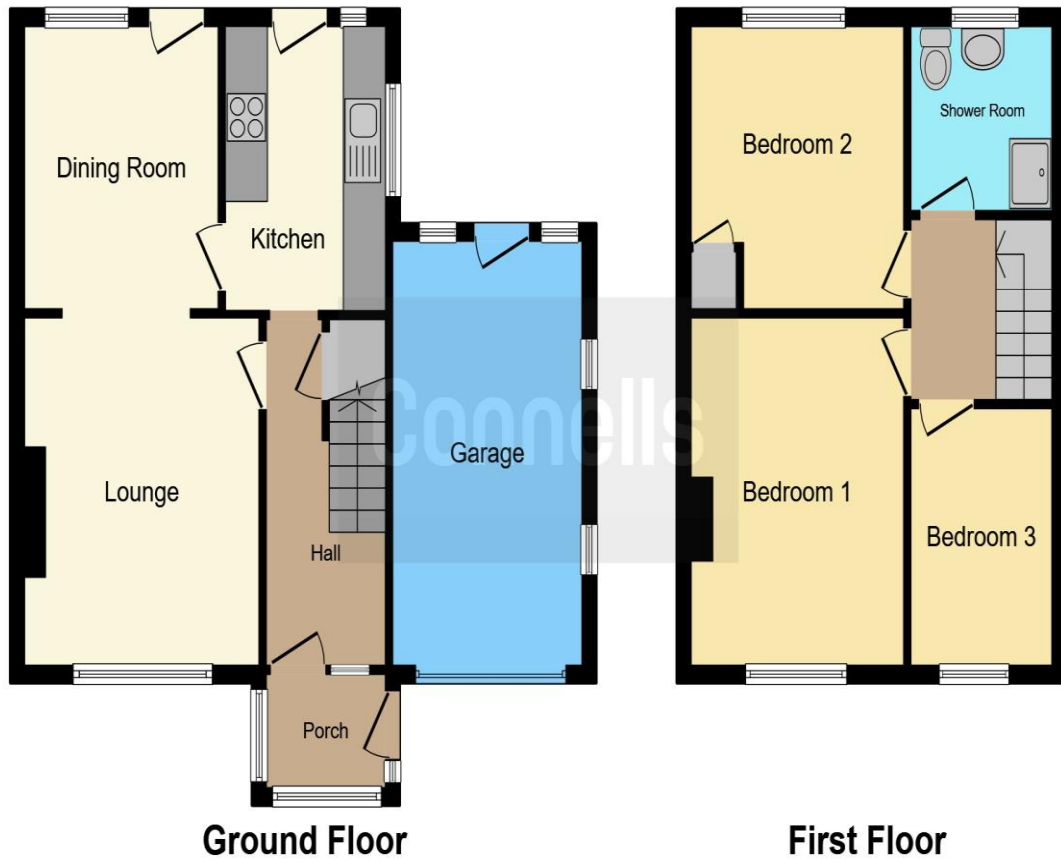
# Cleeve Drive Ivybridge PL21 9BP











This floorplan is for illustrative purposes only and is not drawn to scale. Measurements, floor-areas, openings and orientations are approximate. They should not be relied upon for any purpose and do not form any part of an agreement. No liability is taken for any error or mis-statement. All parties must rely on their own inspections.

To view this property please contact Connells on

**T 01752 691 200**  
**E ivybridge@connells.co.uk**

11 Glanvilles Road Glanvilles Mill  
 IVYBRIDGE PL21 9PS

Property Ref: IVY305977 - 0007

**Tenure:** Freehold

**EPC Rating:** Awaited

**check out more properties at [connells.co.uk](http://connells.co.uk)**



1. MONEY LAUNDERING REGULATIONS Intending purchasers will be asked to produce identification documentation at a later stage and we would ask for your co-operation in order that there will be no delay in agreeing the sale. 2. These particulars do not constitute part or all of an offer or contract. 3. The measurements indicated are supplied for guidance only and as such must be considered incorrect. Potential buyers are advised to recheck measurements before committing to any expense. 4. We have not tested any apparatus, equipment, fixtures, fittings or services and it is in the buyers interest to check the working condition of any appliances.

Connells Residential is registered in England and Wales under company number 1489613, Registered Office is Cumbria House, 16-20 Hockliffe Street, Leighton Buzzard, Bedfordshire, LU7 1GN. VAT Registration Number is 500 2481 05.

see all our properties at [www.connells.co.uk](http://www.connells.co.uk) | [www.rightmove.co.uk](http://www.rightmove.co.uk) | [www.zoopla.co.uk](http://www.zoopla.co.uk)